



Differential Effect of Viable Versus Necrotic Neutrophils on *Mycobacterium tuberculosis* Growth and Cytokine Induction in Whole Blood

David M. Lowe^{1,2,3*}, Julie Demaret⁴, Nonzwakazi Bangani¹, Justine K. Nakiwala^{1,5,6}, Rene Goliath¹, Katalin A. Wilkinson^{1,7}, Robert J. Wilkinson^{1,2,7} and Adrian R. Martineau^{4*}

¹ Wellcome Centre for Infectious Diseases Research in Africa, Department of Medicine, Institute of Infectious Diseases and Molecular Medicine, University of Cape Town, Cape Town, South Africa, ² Department of Medicine, Imperial College London, London, United Kingdom, ³ Institute of Immunity and Transplantation, University College London, London, United Kingdom, ⁴ Barts and The London School of Medicine, Blizard Institute, Queen Mary University of London, London, United Kingdom, ⁵ Department of Biomedical Sciences, Institute of Tropical Medicine, Antwerp, Belgium, ⁶ Department of Biomedical Sciences, University of Antwerp, Antwerp, Belgium, ⁷ The Francis Crick Institute, London, United Kingdom

OPEN ACCESS

Edited by:

Tamás Laskay,
Universität zu Lübeck,
Germany

Reviewed by:

Antonio Condino-Neto,
Universidade de São
Paulo, Brazil
Tobias Dallenga,
Forschungszentrum
Borstel (LG), Germany
Nathalie Winter,
Institut National de la Recherche
Agronomique (INRA), France

*Correspondence:

David M. Lowe
d.lowe@ucl.ac.uk;
Adrian R. Martineau
a.martineau@qmul.ac.uk

Specialty section:

This article was submitted
to Microbial Immunology,
a section of the journal
Frontiers in Immunology

Received: 14 December 2017

Accepted: 11 April 2018

Published: 27 April 2018

Citation:

Lowe DM, Demaret J, Bangani N,
Nakiwala JK, Goliath R, Wilkinson KA,
Wilkinson RJ and Martineau AR
(2018) Differential Effect of Viable
Versus Necrotic Neutrophils
on *Mycobacterium tuberculosis*
Growth and Cytokine Induction
in Whole Blood.
Front. Immunol. 9:903.
doi: 10.3389/fimmu.2018.00903

Neutrophils exert both positive and negative influences on the host response to tuberculosis, but the mechanisms by which these differential effects are mediated are unknown. We studied the impact of live and dead neutrophils on the control of *Mycobacterium tuberculosis* using a whole blood bioluminescence-based assay, and assayed supernatant cytokine concentrations using Luminex™ technology and ELISA. CD15+ granulocyte depletion from blood prior to infection with *M. tuberculosis*-lux impaired control of mycobacteria by 96 h, with a greater effect than depletion of CD4+, CD8+, or CD14+ cells ($p < 0.001$). Augmentation of blood with viable granulocytes significantly improved control of mycobacteria by 96 h ($p = 0.001$), but augmentation with necrotic granulocytes had the opposite effect ($p = 0.01$). Both augmentations decreased supernatant concentrations of tumor necrosis factor and interleukin (IL)-12 p40/p70, but necrotic granulocyte augmentation also increased concentrations of IL-10, G-CSF, GM-CSF, and CCL2. Necrotic neutrophil augmentation reduced phagocytosis of FITC-labeled *M. bovis* BCG by all phagocytes, whereas viable neutrophil augmentation specifically reduced early uptake by CD14+ cells. The immunosuppressive effect of dead neutrophils required necrotic debris rather than supernatant. We conclude that viable neutrophils enhance control of *M. tuberculosis* in blood, but necrotic neutrophils have the opposite effect—the latter associated with induction of IL-10, growth factors, and chemoattractants. Our findings suggest a mechanism by which necrotic neutrophils may exert detrimental effects on the host response in active tuberculosis.

Keywords: neutrophil, mycobacteria, tuberculosis, necrosis, viability

INTRODUCTION

Neutrophils interact with *Mycobacterium tuberculosis* (1, 2) and are important in the host immune response to this pathogen (3). However, their influence on the outcome of infection remains controversial: while they may have a protective role in early infection (3), evidence exists for a detrimental effect in established tuberculosis disease (4, 5).

Literature indicates that neutrophils have a profound impact on the development of innate and acquired immune responses (6, 7), but this has not been significantly studied in tuberculosis. *In vivo* data have revealed a lower percentage of interferon (IFN)- γ expressing CD4+ T cells in bronchoalveolar lavage samples from cavities, which are rich in neutrophils (8), but a causative relationship has not been established.

Neutrophils are also frequently demonstrated to associate with tuberculosis immunopathology in animals (9, 10) and this appears to be specifically associated with necrosis (11). We have also previously observed that neutrophil antimycobacterial activity is impaired during HIV-1 infection (12) and that this is associated with rapid neutrophil necrosis. Others have also noted a neutrophilic response with significant necrosis in the tuberculous lesions of HIV-1 co-infected persons, in association with impaired tumor necrosis factor (TNF) staining (13). Animal models link neutrophil necrosis with pathogen virulence and host susceptibility (14), or link overall necrosis of granulomas with bacillary burden (15), suggesting that this pattern of cell death may correlate with severity of disease. More recently, it has been demonstrated *via* immunohistochemistry that neutrophil markers in human tuberculous granulomas associate with areas of necrosis and with interleukin (IL)-10, while a pronounced neutrophilic necrosis response correlates with enhanced numbers of *M. tuberculosis* organisms (16).

We therefore investigated the influence of viable and necrotic neutrophils on the immune response to tuberculosis. We first examined the cytokine and chemokine profile of supernatants aspirated from whole blood which had been depleted of neutrophils or various other cell types before incubation with *M. tuberculosis*. We also examined the impact of augmenting blood with additional autologous neutrophils [as they are recruited in large numbers to sites of tuberculosis infection (1)] on both the control of infection and the cytokine response, using an *ex vivo* whole blood model (17, 18). We then investigated whether the effect of necrotic neutrophils contrasted with viable neutrophils in modulating the control of and response to infection. These experiments modeled a situation of neutrophilia with rapid cell death, as may be seen in necrotic granulomata, in tuberculosis-HIV co-infection or in severe tuberculosis disease.

MATERIALS AND METHODS

Patients and Recruitment

Participants for depletion experiments were recruited among people who had recently tested negative for HIV in Khayelitsha, South Africa, either at the Ubuntu Site B clinic or the Khayelitsha Youth Centre. Augmentation and phagocytosis experiments were performed using blood from healthy lab donors.

Ethics

The studies were approved by the University of Cape Town Research Ethics Committee (HREC 545/2010) in South Africa and NHS Research Ethics Committee (REC 08-H0720-46) in the UK and performed in accordance with the Declaration of Helsinki. Participants provided written informed consent.

Organisms and Labeling

The development of luminescent mycobacteria, including plasmid construction and electroporation, has been described previously (19). 1.5 ml vials of *M. tuberculosis*-lux stored at -80°C were thawed and added to 15 ml 7H9 (Becton Dickinson)/ADC (Becton Dickinson) growth medium containing 0.05% Tween 80 (Sigma) and 1 mcl/ml hygromycin B (Roche diagnostics). Organisms were cultured to mid-log phase (72 h) before use. Luminescence was measured as previously described (2). *M. bovis* BCG-lux organisms were processed similarly but cultured in 20 ml 7H9/ADC. Non-luminescent *M. bovis* BCG were cultured to mid-log phase in 7H9/ADC (monitored by optical density) and labeled with FITC when required for experiments, as previously described (2).

Cell Depletion and Neutrophil Isolation

For comparative depletion experiments, heparinized blood was divided into aliquots and incubated with Miltenyi MicroBeads at $2-8^{\circ}\text{C}$. Volumes and incubation times were optimized for each antigen and achieved approximately 90% depletion of the target cell [anti-CD4: 100 mcl/ml, 30 min; anti-CD8: 50 mcl/ml, 15 min; anti-CD14: 100 mcl/ml, 30 min; anti-CD15: 50 mcl/ml, 15 min; Basic (unconjugated) MicroBeads used for controls: 50 mcl/ml, 15–30 min; see Figure S1 in Supplementary Material]. Blood was diluted 1:1 with RPMI-1640 and passed through Miltenyi Biotec LS columns supported in magnets (MidiMACS Separation Unit, Miltenyi Biotec); columns had been pre-“primed” with 3 ml MACS buffer [0.5% bovine serum albumin (Sigma) and 2 mM EDTA (Sigma)], all as previously described (2). Depleted blood was collected in Universal containers. Granulocyte isolation using discontinuous Percoll gradient was performed as previously described (2). Neutrophils were rendered necrotic (when required) *via* heat shock at 60°C for approximately 20 min, until all cells were trypan blue (Sigma) positive by microscopy, and then allowed to cool.

Whole Blood Lux Assay

This was performed as previously described in detail (17, 18). Briefly, for comparative depletion experiments, approximately 5×10^5 cfu mid-log phase *M. tuberculosis*-lux in 100 mcl PBS was added to triplicate samples of 900 mcl specific cell-depleted or undepleted (Basic MicroBead-treated) blood, already diluted 1:1 with RPMI as described above. For augmentation experiments, the same inoculum was added to triplicate samples of 450 mcl venous blood pre-mixed 1:1 with either RPMI-1640, viable neutrophils in RPMI-1640 or necrotic neutrophils in RPMI-1640. For each donor, inocula were identical between different depletion/augmentation conditions. Samples were incubated at 37°C on a rocking platform for 96 h; mycobacterial luminescence was measured after removal of supernatants, cell lysis with 10 ml water, centrifugation at $2,000 \times g$ for 10 min and resuspension in 1 ml PBS. Supernatants did not contain significant quantities of mycobacteria despite effective release from cells during lysis (Figure S2 in Supplementary Material). Uninfected samples served as controls for cytokine analysis. For comparison of the effects of necrotic neutrophil debris versus supernatants, samples were processed identically except that all Percoll-isolated

neutrophils were heat-shocked and the necrotic neutrophils were then centrifuged at $1,200 \times g$ for 6 min. Supernatants were removed and the necrotic cell pellet resuspended; 450 μ l aliquots of reserved whole blood were then mixed 1:1 with necrotic neutrophils, necrotic neutrophil supernatant, or RPMI-1640 alone in duplicate (plus one uninfected sample per donor and condition). The infecting organism in these experiments was *M. bovis* BCG, added at the same multiplicity of infection.

Phagocytosis Assay

Samples were prepared as for the lux assay, with the addition of viable, necrotic, or no autologous neutrophils to venous blood, in duplicate per experimental condition. Samples were infected with 100 μ l FITC-labeled BCG organisms diluted according to optical density to approximately 2×10^6 CFU/ml. For each donor, inocula were identical between different augmentation conditions. Samples were mixed and incubated at 37°C for 1 h.

Subsequently, two 200 μ l aliquots were taken from the samples, to which 10 μ l anti-CD14-PE (Becton Dickinson) and 1 μ l BD Horizon™ Fixable Viability Stain 450 (Becton Dickinson) were added. After 20 min, red blood cells were lysed *via* 15-min incubation with 2 ml 1 \times BD Pharm Lyse™ (Becton Dickinson). Samples were then centrifuged at $600 \times g$ for 5 min, resuspended in 1 ml Stain Buffer (BD Pharmingen™) with 12.5 μ l filtered trypan blue (Sigma), centrifuged again, fixed in 500 μ l Cytofix (Becton Dickinson) for 15 min and finally resuspended in 1 ml Stain Buffer. Samples were processed on a BD Fortessa flow cytometer and data analyzed with FlowJo software (Treestar). Figure S3 in Supplementary Material details the gating strategy employed; results are presented as mean of duplicate results per donor/condition.

TNF and IL-10 ELISA

These were performed on supernatants according to manufacturer's instructions (Peprotech, Rocky Hill, NJ, USA). Final dilutions were fivefold; results are presented as mean of duplicate samples per patient/condition. Undetectable readings were assigned an arbitrary value of 1 pg/ml (below the limit of detection of the assay).

Quantiferon-TB Gold™ In-Tube IFN γ Release Assay

This was performed according to manufacturer's instructions.

Luminex™

Supernatants from 96-h blood samples infected with *M. tuberculosis*-lux were pooled across triplicates per participant/condition, filtered twice through 0.22 μ m filter plates (Merck Millipore, Billerica, MA, USA) with centrifugation at $3,000 \times g$ and diluted appropriately according to preliminary results: final dilutions were either 4-fold or 10-fold depending on the experiment. The Invitrogen 30-plex kit (Invitrogen, Carlsbad, CA, USA) was used according to manufacturer's instructions, but we used a lower volume of beads: either 12.5 or 8.4 μ l. Plates were read on a calibrated Luminex 200™ reader and results calculated by the Luminex 200™ software.

Statistics

Parametric data were analyzed using Student's *t*-tests when comparing two groups (paired when appropriate) or one-way ANOVA for comparing three or more groups with *post hoc* correction. Non-parametric data were analyzed using Mann-Whitney *U*-tests or Wilcoxon signed rank tests for two groups and Kruskal-Wallis or Friedman testing with *post hoc* Dunn's correction for three or more groups.

All statistical analyses were performed using SPSS Version 18.0 (SPSS Inc., Chicago, IL, USA) or GraphPad Prism version 4.0 or later. All reported *p*-values are two-sided; *p* < 0.05 was inferred as significant.

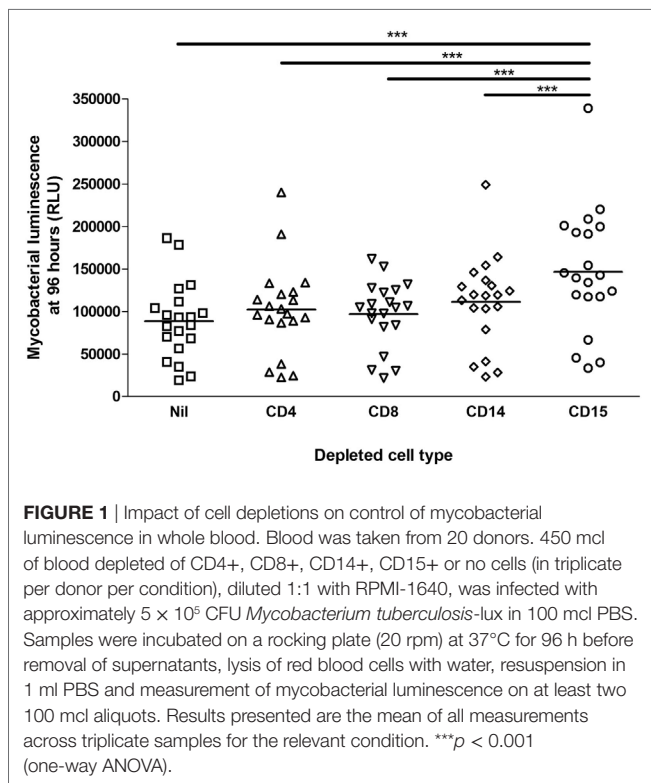
Principal Component Analysis (PCA)

Principal component analysis and associated three-dimensional plots were generated using QluCore™ Omics Explorer v2.3 software. Multi-group comparison was used to identify Luminex™-measured cytokines or chemokines that were differentially abundant between the supernatants of three conditions (blood augmented with viable neutrophils, necrotic neutrophils, or medium only). A *p*-value of maximum 0.05 and *q*-value of maximum 0.1 were used as thresholds. Individual points in the plots represented one donor in one augmentation condition and their position in the plot was determined by the combined effects of all parameters measured for the sample that significantly contributed to the overall between-group difference. The distance between sample points represents Euclidean distance and was calculated using all parameters that significantly contribute to the overall between-group difference. Component vectors are displayed, along with a percentage figure signifying the proportion of the variability in the data that each component accounts for.

RESULTS

Depletion of Neutrophils From Whole Blood Impairs Mycobacterial Control More Than Depletion of Other Cell Types

Aliquots of blood from 20 healthy, HIV-uninfected persons (10 with positive results from Quantiferon-TB Gold In-Tube IFN- γ release assay) were depleted of CD4+, CD8+, CD14+, or CD15+ cells *via* Miltenyi MACS magnetic beads or were incubated with non-conjugated beads as controls. This blood was then infected with *M. tuberculosis*-lux and incubated in rocking tubes for 96 h, as per the previously described whole blood lux assay (17). The mean (SD) neutrophil count in mock-depleted blood [treated with Basic (unconjugated) Microbeads, diluted 1:1 with RPMI-1640] was $1.42 \pm 0.53 \times 10^9$ /l and in CD15-depleted blood was $0.20 \pm 0.17 \times 10^9$ /l. **Figure 1** details the impact of cell depletion on the 96-h luminescence of *M. tuberculosis*-lux. CD15+ cell (granulocyte) depletion had a greater effect than depletion of any other cell type on mycobacterial luminescence (a surrogate of mycobacterial metabolism and/or number) at 96 h (mean RLU per 100 μ l $88,686 \pm 44,734$ in mock-depleted blood versus $146,681 \pm 72,663$ in CD15-depleted blood, $102,262 \pm 52,568$ in CD4-depleted blood, $97,075 \pm 38,993$ in CD8-depleted blood and $111,338 \pm 52,879$ in CD14-depleted blood; *p* < 0.001 for



CD15-depleted versus any other condition). We note that by pairwise comparison versus undepleted blood, both CD4 depletion ($p = 0.016$) and CD14 depletion ($p = 0.004$) also impaired control of mycobacterial luminescence, although the effects were more modest than with CD15 depletion.

CD15+ Cell Depletion Has Relatively Little Effect on the Cytokine and Chemokine Concentrations in Supernatants of *M. tuberculosis*-Infected Blood

Luminex™ analyses of cytokines and chemokines in the supernatants from depletion experiments (see above) are summarized in Figure 2 and Table 1, which indicate those analytes significantly affected by cell depletion after correction for multiple pairwise comparisons by the Bonferroni methodology. Uninfected control samples showed low or undetectable levels of most analytes, although when they were detected there was evidence that cell depletion by itself had a significant effect on cytokine and chemokine responses; subtracting baseline values from uninfected controls thus removes some of the biological effect of the depletion and we, therefore, present analysis on raw data.

Depletion of CD8+ cells had no effect on the cytokine profile of 96-h blood supernatants, while the effect of depletion of CD4+ cells significantly reduced supernatant concentrations of 16 predominantly Th1-associated cytokines, innate inflammatory cytokines, and chemokines. CD14+ cell depletion markedly reduced the concentration of 16 similar molecules. CD15+ cell depletion had less effect on the supernatant analyte profile than CD4+ or CD14+ cell depletion, but after correction for multiple comparisons

there was significantly ($p < 0.05$) reduced CCL2 concentration versus undepleted blood [median (IQR) concentration 1,420 (807–1,684) ng/ml in CD15-depleted blood supernatants versus 1,903 (1,084–3,386) ng/ml in mock-depleted blood supernatants].

Addition of Viable Neutrophils to Human Whole Blood Improves Mycobacterial Control at 96 h, While Addition of Necrotic Neutrophils Has the Opposite Effect

We proceeded to investigate the effect of augmenting blood with either viable or necrotic neutrophils on mycobacterial restriction and cytokine release. Neutrophils from nine donors were isolated by discontinuous Percoll gradient and divided into two equal aliquots; one half was then heat-shocked at 60°C (and subsequently cooled) and either viable neutrophils, necrotic neutrophils, or medium only were added to aliquots of the same donor's blood (kept aside at the time of venepuncture, for a maximum of 2 h). The whole blood lux assay was conducted as previously described (17, 18).

Overall neutrophil purity assessed by Coulter counting was $97.79 \pm 1.16\%$. The non-augmented mean \pm SD neutrophil count was $2.10 \pm 0.75 \times 10^9/l$ versus $9.00 \pm 3.30 \times 10^9/l$ in those samples augmented with viable neutrophils ($p < 0.0001$). Lymphocyte counts were not significantly different: $1.18 \pm 0.53 \times 10^9/l$ in non-augmented versus $1.30 \pm 0.59 \times 10^9/l$ ($p = 0.09$) in neutrophil-augmented blood. Luminescence readings at 96 h post-infection (performed in at least duplicate per donor per condition) were $9,379 \pm 4,888$ RLU per 100 ml for non-augmented blood. Luminescence was significantly decreased in samples augmented with viable neutrophils ($2,766 \pm 1,672$ RLU per 100 ml, $p < 0.001$), and 96-h luminescence correlated inversely with the number of neutrophils using all data from non-augmented or viable-augmented samples ($p < 0.001$). Conversely, augmentation with necrotic neutrophils increased mean luminescence at 96 h post-infection to $11,722 \pm 6,132$ RLU per 100 ml ($p = 0.013$ versus no augmentation, Figure 3A).

Addition of Viable or Necrotic Neutrophils to Human Whole Blood Results in a Significant Alteration of Cytokine and Chemokine Response

Supernatants from these experiments were assayed by Luminex™ 30-plex technology. In total, 26 cytokines or chemokines were detectable with a median value greater than the lower limit of detection. To identify differences in inflammatory profile between the three conditions (non-augmented, viable neutrophil-augmented, or necrotic neutrophil-augmented) we employed QluCore™ Omics Explorer v2.3 to perform PCA. Initial exploration of data suggested that neutrophil manipulation by itself had a significant effect on cytokine and chemokine responses; subtracting uninfected control values, therefore, removes some of the biological effect and we present analysis on raw data.

Principal component analysis showed clear differences in inflammatory profiles between the non-augmented, viable neutrophil-augmented, and necrotic neutrophil-augmented conditions

(Figure 3B; Table S1 in Supplementary Material details *p*- and *q*-values). Figure 4 presents analyte concentrations and displays results from one-way ANOVA for each cytokine or chemokine

found to contribute to the separation of groups in PCA. Maximal cytokine responses were seen in the non-augmented blood. Viable neutrophil augmentation was broadly anti-inflammatory,

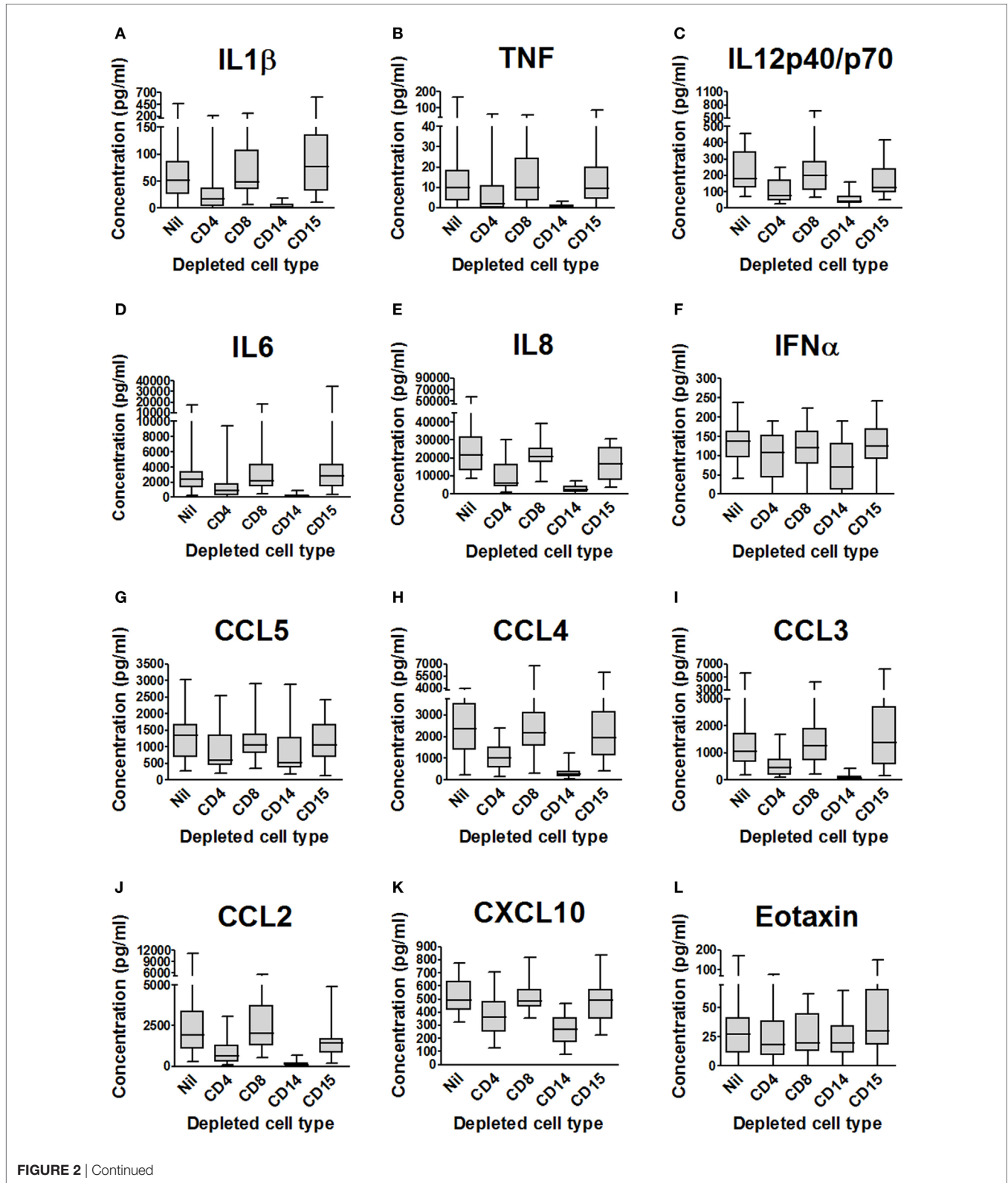


FIGURE 2 | Continued

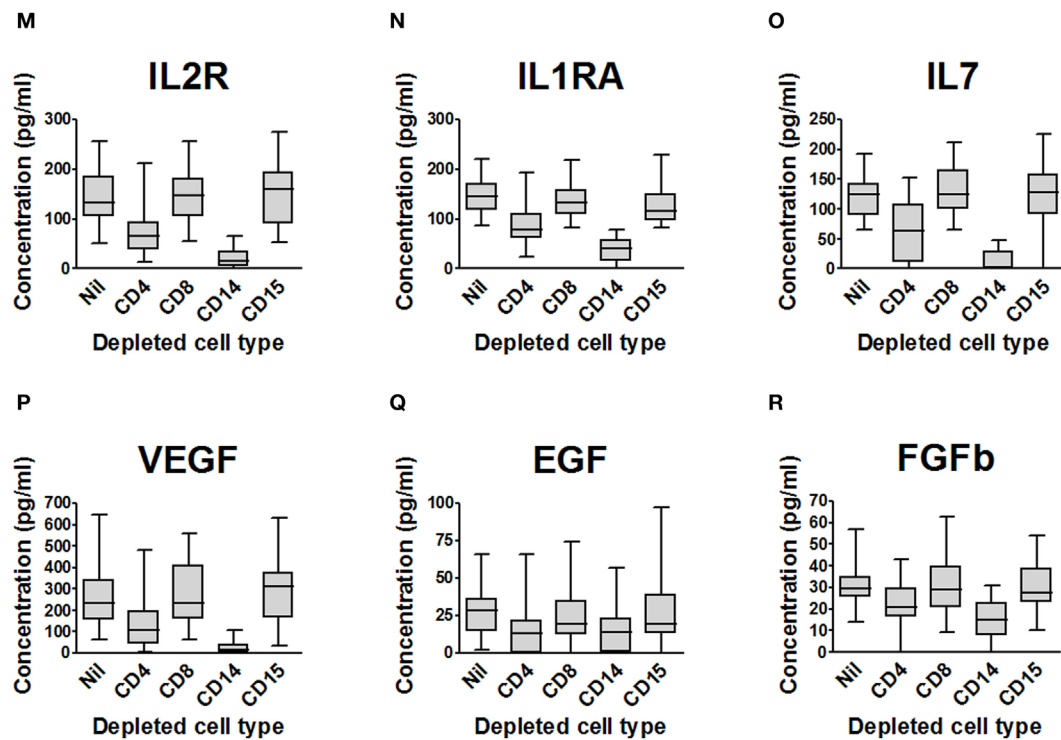


FIGURE 2 | Impact of cell depletions on supernatant cytokines and chemokines from *Mycobacterium tuberculosis*-infected blood. (A–R). Supernatants from the experiments presented in **Figure 1** (blood from 20 donors depleted of CD4+, CD8+, CD14+, CD15+ or no cells and infected with *M. tuberculosis*-lux for 96 h) were aspirated and stored at -80°C until analysis by Luminex™ technology. Box and whisker plots represent median, interquartile range, minimum and maximum values for each analyte. Abbreviations: VEGF, vascular endothelial growth factor; TNF, tumor necrosis factor; IFN, interferon; IL, interleukin; IL-2R, interleukin-2 receptor; IL-1RA, interleukin-1 receptor antagonist; FGFb, fibroblast growth factor basic; EGF, epidermal growth factor; CXCL, C-X-C motif ligand; CCL, C-C chemokine ligand; CD, cluster of differentiation.

reducing supernatant concentrations of IL-1 β , TNF, IL-12p40/p70, CCL3, CCL5, interleukin-2 receptor (IL-2R), and fibroblast growth factor basic (FGFB); only hepatocyte growth factor (HGF) was increased. The addition of necrotic neutrophils to blood was also associated with lower supernatant concentrations of IL-1 β , TNF, IL-12p40/p70, and FGFB, but simultaneously provoked an increase in IL-10, G-CSF, GM-CSF, and CCL2.

Addition of Necrotic Neutrophils to Whole Blood Reduces Phagocytosis Overall, While Addition of Viable Neutrophils Reduces Phagocytosis of Mycobacteria Specifically by CD14+ Cells

To investigate the mechanism by which neutrophils elicited an anti-inflammatory response to mycobacterial infection, we measured phagocytosis of FITC-labeled *M. bovis* BCG by CD14+ cells (shown earlier to be the major source of cytokines and chemokines in the whole blood model, **Figure 2**).

The addition of necrotic neutrophils reduced the overall percentage of events associating with BCG-FITC+ (mean \pm SD percentage 4.51 ± 1.15 versus 6.82 ± 2.21 with no augmentation, $p = 0.047$, and 6.11 ± 0.88 with viable neutrophil augmentation,

$p = 0.027$; **Figure 5A**). However, among BCG-FITC+ events, viable—but not necrotic—neutrophils reduced relative phagocytosis of BCG by CD14+ cells after 1 h of incubation (mean \pm SD percentage of BCG-FITC+ events associating with CD14+ monocytes: in non-augmented blood 3.62 ± 0.98 , in viable neutrophil-augmented blood 1.24 ± 0.38 , $p < 0.001$ versus non-augmented, in necrotic neutrophil-augmented blood 2.89 ± 0.75 , $p < 0.01$ versus viable-augmented; **Figure 5B**). Correspondingly, the percentage of BCG-FITC+ associating with neutrophils significantly increased with the addition of viable neutrophils (mean \pm SD percentage: in non-augmented blood 69.72 ± 8.90 , in viable neutrophil-augmented blood 82.95 ± 3.74 , $p < 0.001$ versus non-augmented, in necrotic neutrophil-augmented blood 74.09 ± 7.72 , $p < 0.01$ versus viable-augmented; **Figure 5C**).

The Immunosuppressive Effect of Necrotic Neutrophils Requires Direct Contact With Cellular Debris

We hypothesized that some of the immunosuppressive effect of necrotic neutrophils might be mediated *via* a soluble factor, as has previously been described with other organisms (20). We therefore added necrotic neutrophils, their supernatant, or medium

TABLE 1 | Summary of impact of cell depletions on supernatant cytokines and chemokines from *Mycobacterium tuberculosis*-infected blood.

| | Depleted cell | | | |
|---------------|---------------|-----|------|------|
| | CD4 | CD8 | CD14 | CD15 |
| VEGF | ↓ | | ↓ | |
| TNF | ↓ | | ↓ | |
| IFN- α | ↓ | | ↓ | |
| IL-8 | ↓ | | ↓ | |
| IL-7 | ↓ | | ↓ | |
| IL-6 | ↓ | | ↓ | |
| IL-2R | ↓ | | ↓ | |
| IL-1RA | ↓ | | ↓ | |
| IL-1 β | ↓ | | ↓ | |
| IL-12p40p70 | ↓ | | ↓ | |
| FGFb | ↓ | | ↓ | |
| Eotaxin | | | | |
| EQF | | | ↓ | |
| CXCL10 | ↓ | | ↓ | |
| CCL5 | ↓ | | | |
| CCL4 | ↓ | | ↓ | |
| CCL3 | ↓ | | ↓ | |
| CCL2 | ↓ | | ↓ | ↓ |

Down arrows indicate those analytes which remain significantly decreased in the depleted condition compared to mock-depleted ($p < 0.05$, Wilcoxon matched pairs) after adjustment for multiple comparisons via the Bonferroni methodology. VEGF, vascular endothelial growth factor; TNF, tumor necrosis factor; IFN, interferon; IL, interleukin; IL-2R, interleukin-2 receptor; IL-1RA, interleukin-1 receptor antagonist; FGFb, fibroblast growth factor basic; EGF, epidermal growth factor; CXCL, C-X-C motif ligand; CCL, C-C chemokine ligand; CD, cluster of differentiation.

alone to aliquots of blood in 17 donors before incubation with *M. bovis* BCG for 96 h. Supernatants were then aspirated and assayed for TNF and IL-10 using ELISA.

As shown in **Figures 5D,E**, the addition of necrotic neutrophils to blood resulted in reduced TNF and increased IL-10 similar to previous results (mean \pm SD TNF concentration in non-augmented blood $1,069 \pm 1,351$ pg/ml, in necrotic neutrophil-augmented blood 613 ± 814 pg/ml, $p < 0.05$; mean \pm SD IL-10 concentration in non-augmented blood 899 ± 478 pg/ml, in necrotic neutrophil-augmented blood $1,236 \pm 870$ pg/ml, $p < 0.05$). However, addition of the supernatants of necrotic neutrophils alone did not have a significant impact on cytokine levels, albeit trends were evident (mean \pm SD TNF concentration 713 ± 680 pg/ml, mean \pm SD IL-10 concentration $1,040 \pm 582$ pg/ml).

DISCUSSION

Both viable (1) and necrotic (16) neutrophils are found in large numbers at the sites of human tuberculosis disease, where they will interact with mycobacteria and other cells of the immune system. We therefore investigated the impact of these cells on the control of mycobacteria and associated immune responses in a human blood model.

We have previously reported that neutrophils are crucial for the control of mycobacterial growth in human blood (21), and we here confirm and extend that finding *via* both depletion and augmentation experiments. Depletion of CD15+ granulocytes from blood has a greater adverse effect on mycobacterial control in whole blood than depletion of CD4+, CD8+, or CD14+ cells.

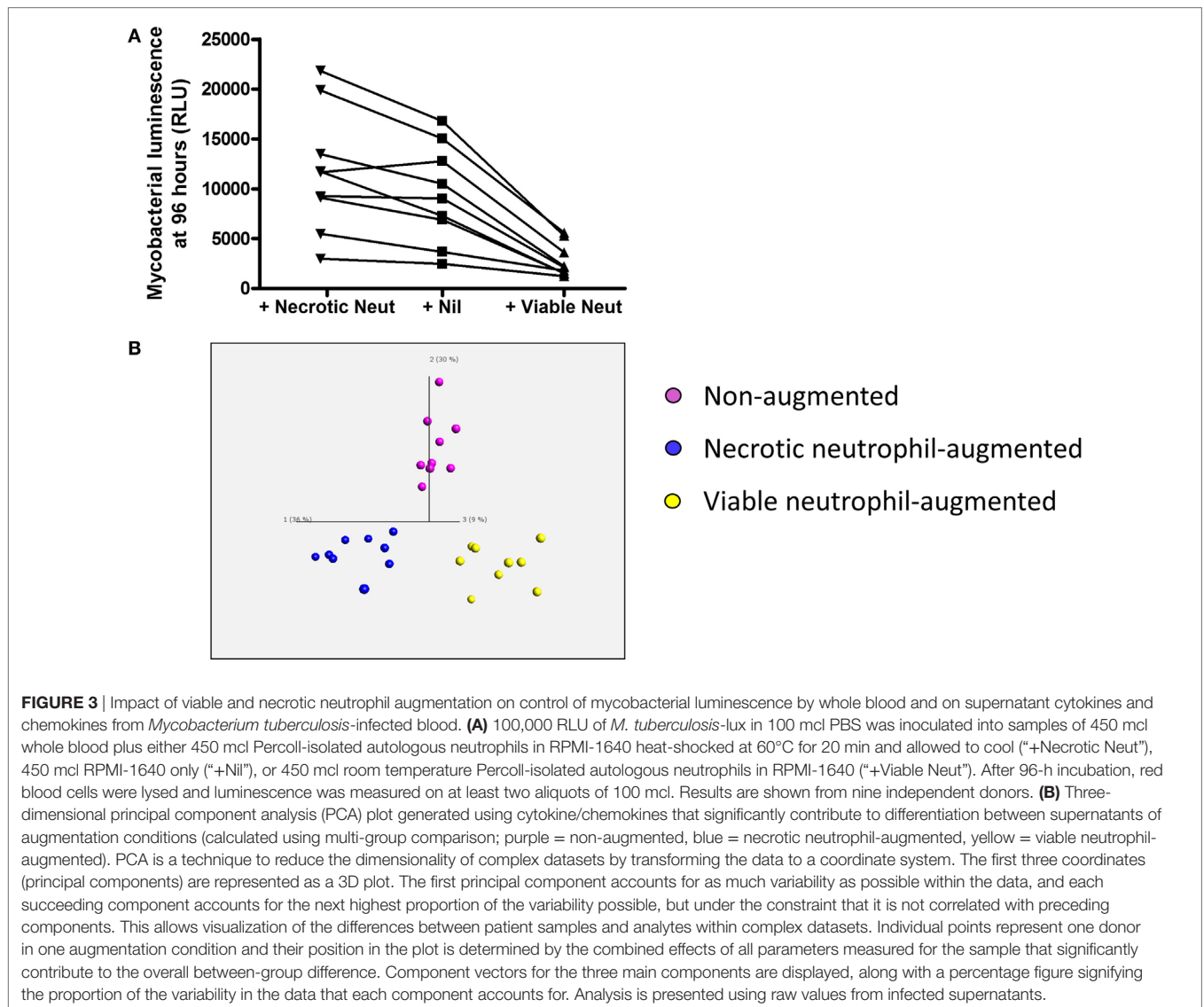
It was interesting to note that depletion of CD15+ cells has relatively little effect on the cytokine and chemokine profile of *M. tuberculosis*-infected blood, suggesting that the mechanism of restriction of mycobacterial growth by neutrophils is likely to be directly mycobactericidal (or perhaps relates to cytokines and chemokines not measured here). Depletion of CD14+ cells and CD4+ cells did significantly impair the release of cytokines and chemokines, but this apparently had less effect on bacillary metabolism. These results raise the possibility that neutrophils, as the dominant cell type in human peripheral blood, are of importance for preventing hematogenous dissemination of bacilli. We note that, especially in areas of high endemicity, tuberculosis is noted not uncommonly as a cause of neutropenic sepsis (22, 23), while neutropenia is also associated with disseminated non-tuberculous mycobacterial infection and poor outcome from such infection (24).

Consistent with these findings, the addition of viable neutrophils to blood significantly improved control of mycobacteria. However, this intervention suppressed inflammatory responses and was associated with reduced phagocytosis of mycobacteria by CD14+ cells (organisms were instead taken up by neutrophils, which is likely to be simply a consequence of the relative numbers of each cell type). We propose that early intracellular killing by neutrophils results in less subsequent activation of innate and acquired immune responses. There may also be a contribution from the immunosuppressive effects of programmed apoptosis, although we have not specifically assessed this. It is interesting to note that *in vivo* data demonstrate poorer local IFN- γ response from CD4+ T cells in bronchoalveolar lavage samples from cavities, where neutrophils dominate (8). We note that the neutrophil augmentation experiments impacted on cytokine responses far more than neutrophil depletion experiments, which might reflect the greater absolute change in cell count of this manipulation.

We have observed (12) and others have also reported (13, 25) accelerated neutrophil necrosis in HIV-infected persons, and have hypothesized that this may be important in the aberrant host response to pathogens. Animal models also link neutrophil influx and associated necrosis to poor outcome (11), while neutrophilia in active tuberculosis correlates with poor outcome (4). We show here that the addition of necrotic neutrophils to blood, even in healthy donors, enhances the metabolism of *M. tuberculosis* while suppressing protective cytokine responses believed to contribute to protection and increasing the release of immunosuppressive IL-10. We have previously demonstrated that the addition of necrotic neutrophils directly to mycobacteria does not restrict their growth by 1 or 24 h (2), and thus the effects seen here in the whole blood model are likely to be mediated *via* an impact on the responses of other immune cells to *M. tuberculosis* infection.

Simultaneously, growth factors (G-CSF and GM-CSF) and the chemokine CCL2 are also increased. Although favorable roles have been suggested for some of these molecules in mycobacterial infection, for example GM-CSF (26), their predominant role at sites of inflammation is to attract more cells—including more neutrophils.

The addition of necrotic neutrophils resulted in a global decrease in phagocytosis, with less cell events associating with organisms than with either viable neutrophil or no augmentation. However,



there was not a specific effect on CD14+ cells. We therefore suggest that necrotic neutrophils reduce phagocytosis both by viable neutrophils (hence reducing early killing) and by mononuclear phagocytes (impairing protective cytokine responses), presumably because phagocytes internalize neutrophil debris instead. Indeed, the immunosuppressive process (reduction in TNF production and increase in IL-10), at least with BCG, required direct contact with cellular debris. We had hypothesized a directly suppressive role of neutrophil contents such as HNP 1–3, as previously described in other systems (20), but this does not appear to be a dominant mechanism in our BCG experiments (unfortunately we were unable to perform these same experiments with *M. tuberculosis*). Recent data have suggested an additional mechanism wherein necrotic neutrophils interfere with the phagosomal processing of *M. tuberculosis* by macrophages and thereby subsequent control of the mycobacteria (27).

We thus propose that in the context of active tuberculosis with necrotic neutrophilic inflammation, as may be seen severe

tuberculosis or certain pathological states, there will be impaired mycobacterial control, reduction of protective but enhancement of immunosuppressive cytokine responses, and an ongoing influx of neutrophils to perpetuate this pathological cycle. This correlates with *post mortem* descriptions of tuberculous granulomas in HIV-1 co-infected patients which demonstrate extensive necrosis, marked neutrophil infiltration, and reduced TNF staining (13). Similarly, recent findings suggest that the CD15 neutrophil marker co-localizes with areas of necrosis and with IL-10 in tuberculous granulomas, and that the extent of this response correlates with *M. tuberculosis* burden (16). The results presented here suggest that the necrotic neutrophils may directly drive the IL-10 response and increased bacillary numbers rather than being simply epiphenomena.

This work has limitations, in addition to those already discussed above. Human hosts encounter *M. tuberculosis* at mucosal membranes rather than blood, although blood does represent a useful medium for study since it contains both innate

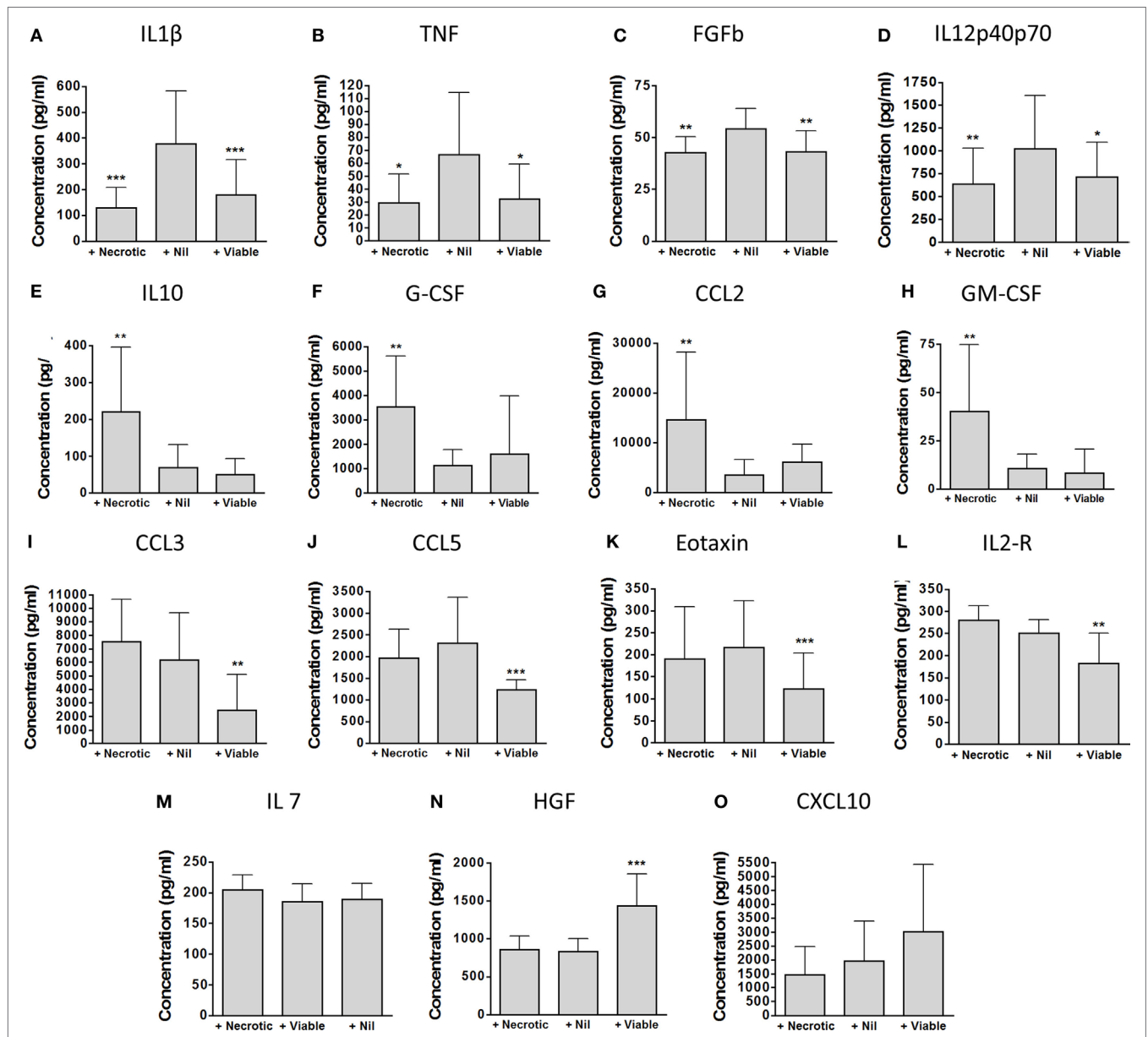
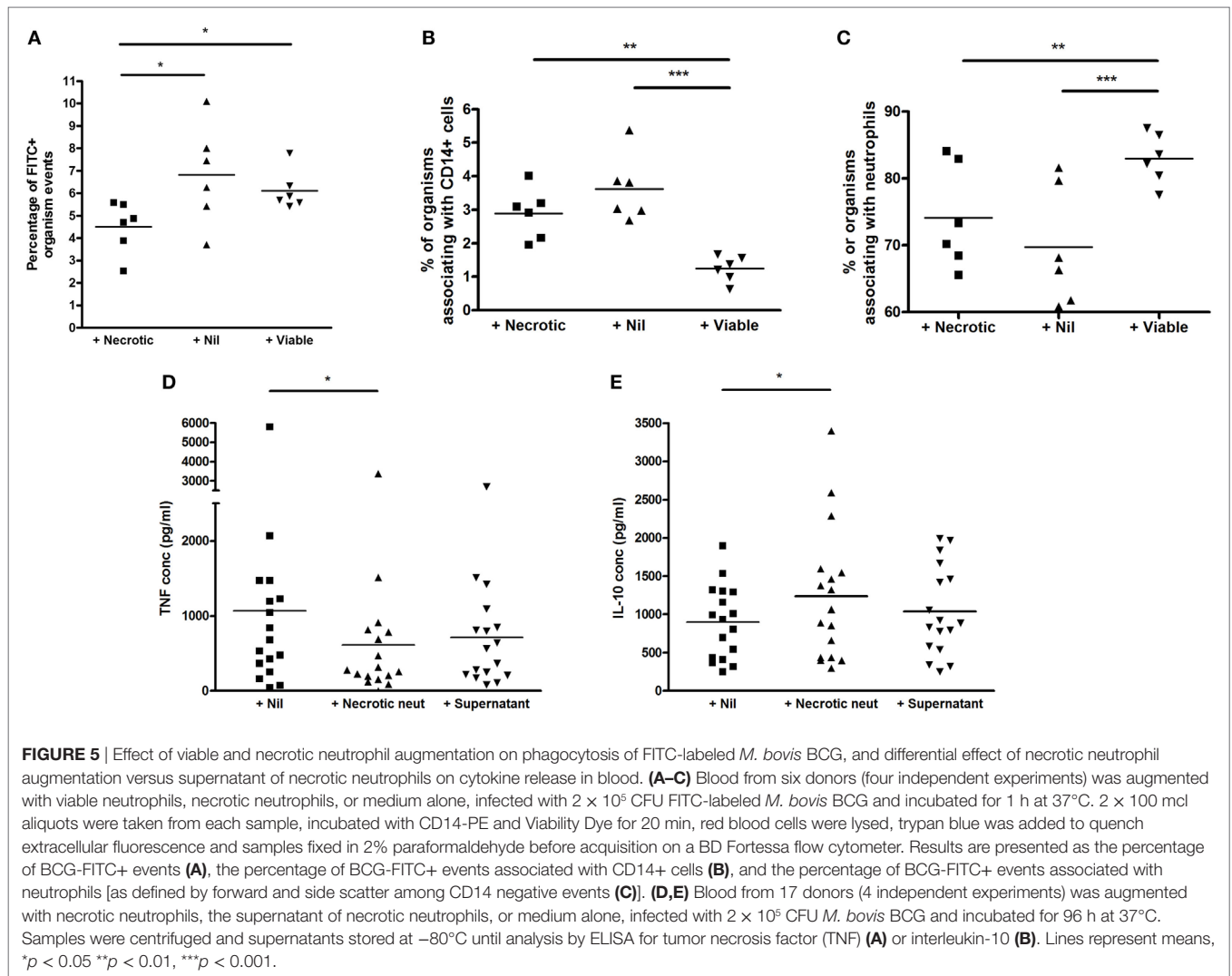


FIGURE 4 | Detailed impact of viable and necrotic neutrophil augmentation on supernatant cytokines and chemokines from *Mycobacterium tuberculosis*-infected blood. **(A–O)** Cytokines and chemokines were measured in 96-h supernatants of *M. tuberculosis*-infected blood which had been augmented with necrotic autologous neutrophils (“+Necrotic”), with medium only (“+Nil”), or with viable autologous neutrophils (“+Viable”). Bars represent mean ± SD for each analyte found to be significant in principal component analysis. Presented are *p*-values from one-way ANOVA with Bonferroni correction comparing both augmented conditions with the medium-only control: **p* < 0.05, ***p* < 0.01, ****p* < 0.001. Data are from nine separate donors in four independent experiments. Abbreviations: IL, interleukin; TNF, tumor necrosis factor; FGFb, fibroblast growth factor basic; G-CSF, granulocyte-colony stimulating factor; GM-CSF, granulocyte macrophage-colony stimulating factor; CCL, C-C chemokine ligand; CXCL, C-X-C motif ligand; IL-2R, interleukin-2 receptor; HGF, hepatocyte growth factor.

and acquired immune system components. Heat shock is not the mechanism by which neutrophils die *in vivo*, but it does reliably induce necrosis within a short time: this method thus intended that autologous aliquots of viable neutrophils and whole blood should not experience significant cell death or other changes in the interim while necrotic cells were prepared. Depletion was not absolute for the target cells, but we felt that an approximately 90% reduction in cell count was likely to be biologically significant.

As mentioned above, certain experiments were performed with *M. bovis* BCG rather than *M. tuberculosis* for reasons of biosecurity, and although we have previously seen similar results between these organisms in terms of neutrophil phagocytosis (2) and neutrophil control of mycobacterial luminescence (21), care should still be taken in extrapolating between organisms.

In summary, our data support the importance of neutrophils in the host response to tuberculosis both *via* a direct antimycobacterial



activity and *via* an effect on the development of acquired immune responses. In particular, necrotic neutrophils impair mycobacterial control, reduce protective cytokine responses, and drive IL-10 and growth factor release: this pathological cycle may contribute to the negative association between neutrophilia and host prognosis (4).

ETHICS STATEMENT

The studies were approved by the University of Cape Town Research Ethics Committee (HREC 545/2010) in South Africa and NHS Research Ethics Committee (REC 08-H0720-46) in the UK and performed in accordance with the Declaration of Helsinki. Participants provided written informed consent.

AUTHOR CONTRIBUTIONS

DL, JD, KW, RW, and AM conceived the experiments. DL, JD, and RG recruited participants and obtained samples. DL, JD, NB, and JN performed experiments. DL and JD performed data analysis.

DL and AM wrote the draft manuscript and all authors contributed to manuscript revision, read and approved the submitted version.

FUNDING

This work was supported by Wellcome Trust (087754 to DL, 097684 to NB, 104803 and 203135 to RW, FC00110218 to Francis Crick Institute); Cancer Research UK (FC00110218 to Francis Crick Institute); Medical Research Council UK (FC00110218 to Francis Crick Institute); European Union (FP7-HEALTH-F3-2012-305578 to RW); National Research Foundation of South Africa (96841 to RW) and Barts Charity (MGU0292).

SUPPLEMENTARY MATERIAL

The Supplementary Material for this article can be found online at <https://www.frontiersin.org/articles/10.3389/fimmu.2018.00903/full#supplementary-material>.

REFERENCES

- Eum SY, Kong JH, Hong MS, Lee YJ, Kim JH, Hwang SH, et al. Neutrophils are the predominant infected phagocytic cells in the airways of patients with active pulmonary TB. *Chest* (2010) 137:122–8. doi:10.1378/chest.09-0903
- Lowe DM, Bangani N, Mehta MR, Lang DM, Rossi AG, Wilkinson KA, et al. A novel assay of antimycobacterial activity and phagocytosis by human neutrophils. *Tuberculosis (Edinb)* (2013) 93:167–78. doi:10.1016/j.tube.2012.11.014
- Lowe DM, Redford PS, Wilkinson RJ, O'Garra A, Martineau AR. Neutrophils in tuberculosis: friend or foe? *Trends Immunol* (2012) 33:14–25. doi:10.1016/j.it.2011.10.003
- Lowe DM, Bandara AK, Packe GE, Barker RD, Wilkinson RJ, Griffiths CJ, et al. Neutrophilia independently predicts death in tuberculosis. *Eur Respir J* (2013) 42(6):1752–7. doi:10.1183/09031936.00140913
- Eruslanov EB, Lyadova IV, Kondratieva TK, Majorov KB, Scheglov IV, Orlova MO, et al. Neutrophil responses to *Mycobacterium tuberculosis* infection in genetically susceptible and resistant mice. *Infect Immun* (2005) 73:1744–53. doi:10.1128/IAI.73.3.1744-1753.2005
- Duffy D, Perrin H, Abadie V, Benhabiles N, Boissonnas A, Liard C, et al. Neutrophils transport antigen from the dermis to the bone marrow, initiating a source of memory CD8+ T cells. *Immunity* (2012) 37(5):917–29. doi:10.1016/j.immuni.2012.07.015
- Mantovani A, Cassatella MA, Costantini C, Jaillon S. Neutrophils in the activation and regulation of innate and adaptive immunity. *Nat Rev Immunol* (2011) 11(8):519–31. doi:10.1038/nri3024
- Barry S, Breen R, Lipman M, Johnson M, Janossy G. Impaired antigen-specific CD4(+) T lymphocyte responses in cavitary tuberculosis. *Tuberculosis (Edinb)* (2009) 89(1):48–53. doi:10.1016/j.tube.2008.07.002
- Yeremeev V, Linge I, Kondratieva T, Apt A. Neutrophils exacerbate tuberculosis infection in genetically susceptible mice. *Tuberculosis (Edinb)* (2015) 95(4):447–51. doi:10.1016/j.tube.2015.03.007
- Kimmey JM, Huynh JP, Weiss LA, Park S, Kambal A, Debnath J, et al. Unique role for ATG5 in neutrophil-mediated immunopathology during *M. tuberculosis* infection. *Nature* (2015) 528(7583):565–9. doi:10.1038/nature16451
- Vilaplana C, Marzo E, Tapia G, Diaz J, Garcia V, Cardona PJ. Ibuprofen therapy resulted in significantly decreased tissue bacillary loads and increased survival in a new murine experimental model of active tuberculosis. *J Infect Dis* (2013) 208(2):199–202. doi:10.1093/infdis/jit152
- Lowe DM, Bangani N, Goliath R, Kampmann B, Wilkinson KA, Wilkinson RJ, et al. Effect of antiretroviral therapy on HIV-mediated impairment of the neutrophil antimycobacterial response. *Ann Am Thorac Soc* (2015) 12(11):1627–37. doi:10.1513/AnnalsATS.201507-463OC
- de Noronha AL, Bafica A, Nogueira L, Barral A, Barral-Netto M. Lung granulomas from *Mycobacterium tuberculosis*/HIV-1 co-infected patients display decreased *in situ* TNF production. *Pathol Res Pract* (2008) 204(3):155–61. doi:10.1016/j.prp.2007.10.008
- Beisiegel M, Kursar M, Koch M, Loddenkemper C, Kuhlmann S, Zedler U, et al. Combination of host susceptibility and virulence of *Mycobacterium tuberculosis* determines dual role of nitric oxide in the protection and control of inflammation. *J Infect Dis* (2009) 199(8):1222–32. doi:10.1086/597421
- Gil O, Guirado E, Gordillo S, Diaz J, Tapia G, Vilaplana C, et al. Intragranulomatous necrosis in lungs of mice infected by aerosol with *Mycobacterium tuberculosis* is related to bacterial load rather than to any one cytokine or T cell type. *Microbes Infect* (2006) 8(3):628–36. doi:10.1016/j.micinf.2005.08.014
- Diedrich CR, O'Hern J, Gutierrez MG, Allie N, Papier P, Meintjes G, et al. Relationship between HIV-1 co-infection, IL-10, and *M. tuberculosis* in human lymph node granulomas. *J Infect Dis* (2016) 214(9):1309–18. doi:10.1093/infdis/jiw313
- Kampmann B, Gaora PO, Snewin VA, Gares MP, Youn0g DB, Levin M. Evaluation of human antimycobacterial immunity using recombinant reporter mycobacteria. *J Infect Dis* (2000) 182(3):895–901. doi:10.1086/315766
- Kampmann B, Tena GN, Mzazi S, Eley B, Young DB, Levin M. Novel human *in vitro* system for evaluating antimycobacterial vaccines. *Infect Immun* (2004) 72(11):6401–7. doi:10.1128/IAI.72.11.6401-6407.2004
- Snewin VA, Gares MP, Gaora PO, Hasan Z, Brown IN, Young DB. Assessment of immunity to mycobacterial infection with luciferase reporter constructs. *Infect Immun* (1999) 67(9):4586–93.
- Miles K, Clarke DJ, Lu W, Sibinska Z, Beaumont PE, Davidson DJ, et al. Dying and necrotic neutrophils are anti-inflammatory secondary to the release of alpha-defensins. *J Immunol* (2009) 183(3):2122–32. doi:10.4049/jimmunol.0804187
- Martineau AR, Newton SM, Wilkinson KA, Kampmann B, Hall BM, Nawroly N, et al. Neutrophil-mediated innate immune resistance to mycobacteria. *J Clin Invest* (2007) 117(7):1988–94. doi:10.1172/JCI31097
- Chen C-Y, Sheng W-H, Cheng A, Tsay W, Huang S-Y, Tang J-L, et al. Clinical characteristics and outcomes of *Mycobacterium tuberculosis* disease in adult patients with hematological malignancies. *BMC Infect Dis* (2011) 11:324. doi:10.1186/1471-2334-11-324
- Biswal S, Godnaik C. Incidence and management of infections in patients with acute leukemia following chemotherapy in general wards. *Ecancer-medicalscience* (2013) 7:310. doi:10.3332/ecancer.2013.310
- Chen CY, Sheng WH, Lai CC, Liao CH, Huang YT, Tsay W, et al. Mycobacterial infections in adult patients with hematological malignancy. *Eur J Clin Microbiol Infect Dis* (2012) 31:1059–66. doi:10.1007/s10096-011-1407-7
- Pitrak DL, Tsai HC, Mullane KM, Sutton SH, Stevens P. Accelerated neutrophil apoptosis in the acquired immunodeficiency syndrome. *J Clin Invest* (1996) 98(12):2714–9. doi:10.1172/JCI119096
- Gonzalez-Juarrero M, Hattle JM, Izzo A, Junqueira-Kipnis AP, Shim TS, Trapnell BC, et al. Disruption of granulocyte macrophage-colony stimulating factor production in the lungs severely affects the ability of mice to control *Mycobacterium tuberculosis* infection. *J Leukoc Biol* (2005) 77(6):914–22. doi:10.1189/jlb.1204723
- Dallenga T, Repnik U, Corleis B, Eich J, Reimer R, Griffiths GW, et al. *M. tuberculosis*-induced necrosis of infected neutrophils promotes bacterial growth following phagocytosis by macrophages. *Cell Host Microbe* (2017) 22(4):519–30. doi:10.1016/j.chom.2017.09.003

Conflict of Interest Statement: The authors declare that the research was conducted in the absence of any commercial or financial relationships that could be construed as a potential conflict of interest.

Copyright © 2018 Lowe, Demaret, Bangani, Nakiwala, Goliath, Wilkinson, Wilkinson and Martineau. This is an open-access article distributed under the terms of the Creative Commons Attribution License (CC BY). The use, distribution or reproduction in other forums is permitted, provided the original author(s) and the copyright owner are credited and that the original publication in this journal is cited, in accordance with accepted academic practice. No use, distribution or reproduction is permitted which does not comply with these terms.