

Review Article

Noninvasive molecular imaging of neuroinflammation

Andreas H Jacobs^{1,2,3}, Bertrand Tavitian⁴ and the INMiND consortium⁵

¹European Institute for Molecular Imaging (EIMI) at the Westfalian Wilhelms-University of Münster (WWU), Münster, Germany; ²Department of Nuclear Medicine, University Hospital, WWU, Münster, Germany; ³Interdisciplinary Center for Clinical Research (IZKF), WWU, Münster, Germany;

⁴CEA, I2BM, SHFJ, Orsay, France

Inflammation is a highly dynamic and complex adaptive process to preserve and restore tissue homeostasis. Originally viewed as an immune-privileged organ, the central nervous system (CNS) is now recognized to have a constant interplay with the innate and the adaptive immune systems, where resident microglia and infiltrating immune cells from the periphery have important roles. Common diseases of the CNS, such as stroke, multiple sclerosis (MS), and neurodegeneration, elicit a neuroinflammatory response with the goal to limit the extent of the disease and to support repair and regeneration. However, various disease mechanisms lead to neuroinflammation (NI) contributing to the disease process itself. Molecular imaging is the method of choice to try to decipher key aspects of the dynamic interplay of various inducers, sensors, transducers, and effectors of the orchestrated inflammatory response *in vivo* in animal models and patients. Here, we review the basic principles of NI with emphasis on microglia and common neurologic disease mechanisms, the molecular targets which are being used and explored for imaging, and molecular imaging of NI in frequent neurologic diseases, such as stroke, MS, neurodegeneration, epilepsy, encephalitis, and gliomas.

Journal of Cerebral Blood Flow & Metabolism (2012) 32, 1393–1415; doi:10.1038/jcbfm.2012.53; published online 2 May 2012

Keywords: Alzheimer's disease; cerebral ischemia; inflammation; multiple sclerosis; microglia; molecular imaging

Introduction

Present in all vertebrates, inflammation is a highly dynamic and complex process combining local and systemic reactions of multiple cell types, chemical signals, and signaling pathways. Inflammation is an adaptive response for restoring tissue homeostasis (Medzhitov, 2008) and implies a tight interplay between the tissue and the immune system. It is found in physiological and pathological situations, where it is beneficial when it contributes to support repair and regeneration (e.g., wound healing, scar formation, and suppression of infection) and, on the

opposite, detrimental when excessive or persistent inflammation worsens tissue injury (e.g., allergy, chronic infections, and neurodegeneration).

Almost any type of tissue insult activates inflammation; however, the inflammatory response varies with the nature of the insult (mechanical, chemical, infectious, and tumoral) and with the tissue. Originally viewed as an immune-privileged organ, the CNS was progressively recognized to be constantly in direct and dynamic interaction with the innate and the adaptive immune systems. Neuroinflammation (NI) is particular because (1) the CNS has efficient natural protection from mechanical aggressions by the skull and from biological and chemical aggressions by the blood–brain barrier (BBB); (2) the CNS has limited regeneration capacities; and (3) any local impairment of its spatial organization can lead to the definitive loss of a major function. Neuroinflammation is a physiological defense process in which resident microglia and infiltrating immune cells from the periphery have an important role, but it is also involved during brain maturation and neurogenesis. Diseases of the central nervous system (CNS) lead to

Correspondence: Professor Dr med. AH Jacobs, European Institute for Molecular Imaging, Mendelstrasse 11, 48149 Münster, Germany. E-mail: ahjacobs@uni-muenster.de

⁵The principle investigators of the INMiND consortium are listed at the end (see Appendix).

This review is supported in part by DiMI-NoE LSHB-CT-2005-512146, INMiND-LSIP 278850, and IZKF-SchwJ3/001/11.

Received 3 December 2011; revised 5 March 2012; accepted 23 March 2012; published online 2 May 2012

a neuroinflammatory response, whose trivial goal is to limit the extent of the disease, to clear tissue damage and to support repair and regeneration. However, there is also clear evidence in several cases that NI may, depending on the inducing pathological mechanism, contribute to the disease process itself. More surprisingly, NI seems also to be associated with psychiatric disorders such as major depression (Alexopoulos and Morimoto, 2011) or schizophrenia (Doorduyn *et al*, 2009a).

Given the dynamic nature of NI, the variety of cells and factors involved and the changes in tissue organization induced, exploration methods of practical value for its understanding must take 'time' and 'space' into account. In many instances, anatomical and functional *in-vivo* imaging methods are essential for diagnosis and as read-out of effective therapy and have a major impact on patient care. More recently, *in-vivo* imaging technologies have matured enough to look into the molecular mechanisms and functional consequences of neuroinflammatory processes at various disease stages, and even though we are still struggling through the 'jungle' of chemical effectors, receptors, signaling mechanisms, and cellular interactions involved, *in-vivo* cellular and molecular imaging is increasingly called on to improve our understanding of NI. Conversely, the objective of molecular imaging is not only to decipher further the cellular biochemistry of NI, but also to develop efficient, reliable, and quantitative noninvasive methods capable to guide therapeutic developments that alter neuroinflammatory cascades, prevent tissue damage and support tissue repair processes. At the same time, care must be taken not to overemphasize the clinical importance of NI during the disease process, just because imaging studies provide evidence of its presence, which even though genuine may have little practical importance. Future work should therefore concentrate on the dynamic interplay between NI and the molecular mechanisms inducing cellular damage.

The intention of this article is to review NI imaging strategies which have been used in experimental and clinical applications. Rather than focusing on a single target, imaging method, or disease mechanism, we describe and discuss the current status and possible future developments of (1) molecular targets for NI, (2) imaging methods and technologies, in (3) a variety of neurologic diseases. This review shall complement other reviews that guide the reader through the advantages and disadvantages of a particular imaging modality (e.g., Stoll and Bendzus, 2010 and Wunder *et al*, 2009). Instead, we focus on molecular mechanisms and possible targets for imaging in various neurologic diseases, assuming that the reader is familiar with the basic principles of the major imaging technologies, such as optical, radionuclide (positron-emission tomography (PET), and single-photon emission computed tomography (SPECT)), and magnetic resonance imaging (MRI), as their different strengths and weaknesses have

already been extensively commented upon, i.e., a high sensitivity and high spatial resolution for optical; high sensitivity and possibility for true signal quantification for radionuclide imaging; and high spatial resolution and physiological and biochemical imaging for MRI.

The review is divided into a first part, in which the basic principles of NI are grossly summarized with special emphasis on microglia. In the second part, several molecular targets among the complex interplay between inducers, transducers, and effectors of NI are selected and discussed, in particular those which are candidates to or are already used as targets for noninvasive molecular imaging. The third part deals with clinical and experimental molecular imaging of NI in the most frequent neurologic diseases (stroke, multiple sclerosis (MS), neurodegenerative diseases (ND), epilepsy, encephalitis, and gliomas).

Basic principles of neuroinflammation

The term 'inflammation' refers to a generic multi-cellular process, characterized by (1) changes in local vasculature (increased blood flow and vascular permeability), (2) activation of resident immune competent cells, (3) infiltration of mobile cells of the immune system (neutrophils, macrophages, and lymphocytes), and (4) cytokine production (Graeber *et al*, 2011). Neuroinflammation is the inflammation of the nervous system observed in diseases of the CNS, including stroke, MS, Alzheimer's (AD) and Parkinson's disease (PD), neurotrophic viral infections, neoplasias, head traumas, and even excess ethanol absorption. All these pathologies trigger an immune activation of the brain, which contributes on the one hand to tissue damage, loss of neurons and dysfunction, on the other hand is involved in neuroregeneration and tissue repair (Rivest, 2009). Signals triggering inflammation may vary depending on the cause or inducing factor. Using optical in zebrafish, hydrogen peroxide (H_2O_2) was recently identified as the very first signal for wound detection and the primer of inflammation (Niethammer *et al*, 2009). It is not unlikely that H_2O_2 is also the signal initiating NI in the mammalian brain, although this remains to be demonstrated. Between the myriad of primary and secondary signaling molecules involved at different levels in NI, the role of ATP in triggering the activation of microglia cells is well established and was beautifully shown in live mouse brains by two-photon microscopy (Davalos *et al*, 2005).

Neuroinflammation is classically associated with CNS infections (e.g., herpes simplex virus type 1 (HSV-1) encephalitis) and autoimmune disease (e.g., MS) as well as with acute (e.g., ischemia) or chronic (e.g., AD) CNS disease processes. The NI occurring in the absence of microorganisms has been termed as sterile inflammation (Chen and Nunez, 2010). In chronic CNS diseases, such as AD and PD, some authors have proposed to replace the term 'neuroin-

flammation' with the term 'microglial activation' (Graeber *et al*, 2011) with respect to the leading role of microglia and the absence of an obvious participation of granulocytes or T cells in these diseases.

Neuroinflammation can be viewed as the immune response of the brain, a symphony played by an orchestra of many cells and molecules and involving an intricate combination of events with varying time courses:

- (1) Activation of damage-associated molecular patterns (DAMPs; e.g., high-mobility group box 1 proteins, heat-shock proteins, histones, oxidized lipids, ATP, amyloid- β ($A\beta$)) by tissue injury, or of pathogen-associated molecular patterns by exogenous pathogens;
- (2) Activation of Toll-like receptors (TLRs) of various subtypes and of the receptor for advanced glycation end products with subsequent release of adhesion molecules, cytokines, and chemokines directing activation and targeted migration of effector cells (microglia, macrophages, and lymphocytes);
- (3) Activation and recruitment of microglial cells, the major cell of innate immunity in the brain;
- (4) Infiltration of macrophages and T lymphocytes of various subtypes (Th1, Th2, Th17, and regulatory T cells);
- (5) Alteration of the BBB that is designed to prevent entry of T cells and neurotoxic compounds at the neurovascular unit;
- (6) Activation and recruitment of astrocytes that tend to control T-cell infiltration into the CNS by inducing apoptosis;
- (7) Release or expression of a variety of signaling factors, including the neuron-derived neuropeptides, membrane proteins (e.g., fractalkine (FKN), cannabinoid receptors, and major histocompatibility complex molecules), semaphorins and lectins that all take part in the regulation of the neuroinflammatory process (reviewed by Amor *et al*, 2010; Macrez *et al*, 2011; Neumann *et al*, 2009; and Tian *et al*, 2009; Figure 1).

The main actors of the innate (nonspecific) immune response of the CNS are the microglial cells that constitute ~10% of the entire cell population of the brain. Microglia represent the brain's resident macrophages involved in the removal of cell debris after ischemia or myelin damage, in the limitation of neurotrophic viral infections, as well as in neurorepair processes. Microglia are stimulated by and contribute to a variety of brain diseases (Perry *et al*, 2010) and, depending on the injury and microenvironmental conditions, may aggravate injury and cause neurodegeneration, or conversely may mediate protective mechanisms promoting tissue repair and regeneration, in opposing roles that have been termed as 'the Yin and Yang' of microglia (Czeh *et al*, 2011). Microglia are essential for normal brain maturation and involved in various developmental processes such as apoptosis,

axonal growth and guidance, regulation of embryonic cortical precursor cell development, neuronal differentiation, astrocyte proliferation, and angiogenesis (Czeh *et al*, 2011). In the adult brain under normal physiological conditions, microglia exhibit a non-inflammatory phenotype often described as quiescent or resting. However, imaging studies of fluorescently tagged microglia have shown that, as 'cops on the beat' (Raivich, 2005), microglial cells exert active and permanent surveillance of their local environment and produce anti-inflammatory and neurotrophic factors (Davalos *et al*, 2005; Nimmerjahn *et al*, 2005). After activation by various stimuli (tissue damage, pathogen invasion, and protein aggregates), microglia switch to an activated phenotype and promote an inflammatory response to serve pathogen clearance and tissue repair (Davalos *et al*, 2005). Reactive microglial cells derived from resident microglia have morphological features similar to infiltrated macrophages derived from bone marrow (BMD). As the main immune cells of the CNS, microglial cells come in two major subtypes: parenchymal versus bone marrow derived microglia cells with, respectively, low and high major histocompatibility complex class II expression, corresponding respectively to a poor or high antigen-presenting function (Turrin and Rivest, 2006). A recent study suggests that bone marrow derived cells do not enter the healthy CNS in the adult animal and that microglia and blood-derived monocytes have distinct embryonic origins: microglia seed the CNS early during embryogenic development while, thereafter, there is no significant contribution from adult hematopoietic stem cells to the resident pool of microglia in the normal brain (Ginhoux *et al*, 2010).

The involvement of microglia in developmental processes (apoptosis, axonal growth, and guidance) may be related both to neurorepair mechanisms, especially in the context of their ability to secrete various growth factors, such as brain-derived neurotrophic factor, basic fibroblast growth factor, and insulin-like growth factor (Czeh *et al*, 2011) and to inflammation-related neurotoxicity. Indeed, several inducers, sensors, transducers, and effectors seem to contribute both to the orchestrated inflammatory response and to the microglia-mediated neurotoxicity (Rivest, 2009) and expression of various surface receptors, including those for complement, cytokines, chemokines, major histocompatibility complex II, and others, trigger or amplify the innate immune response. The simplest, though schematic, manner to describe microglial activation is to use the similarity with the two macrophage types described in peripheral inflammation. Depending on the mode of activation and environmental factors such as age, surveying microglia may come into two phenotypes: the proinflammatory 'M1' phenotype is activated by lipopolysaccharides and interferon- γ and corresponds to the 'classical' pathway of macrophage activation, while the anti-inflammatory M2 phenotype is activated by interleukin (IL)-4 and IL-13

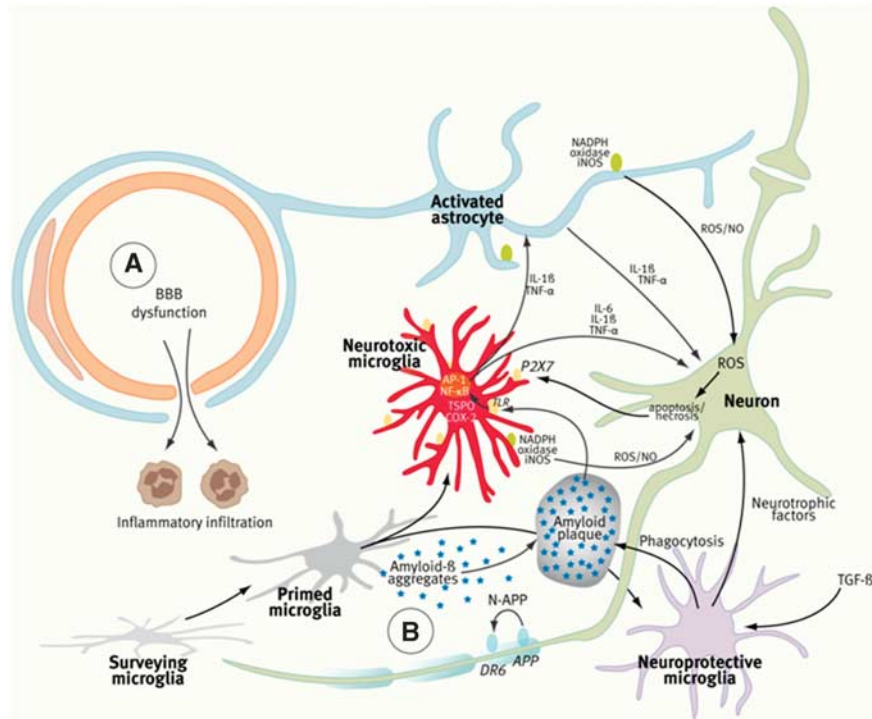


Figure 1 Components of the neurovascular unit (NVU), the ‘Vicious Cycle’ of neuroinflammation, and the ‘Ying and Yang’ of microglia. In ischemic stroke and multiple sclerosis (MS) (A), peripheral immune cells contribute substantially to the local inflammatory response and tissue damage. The dynamics of blood–brain barrier (BBB) penetration of immune cells is increasingly being studied *in vivo* by two-photon microscopy at the cellular level and by ultrasmall superparamagnetic iron oxides (USPIOs) (phagocytosed by peripheral macrophages) and magnetic resonance imaging (MRI). In neurodegenerative diseases (B), the BBB is intact and neuroinflammation (NI) is predominated by the activation of microglia cells, which is mostly studied by translocator protein (TSPO)-targeting tracers and positron-emission tomography (PET) or single-photon emission computed tomography (SPECT) imaging. In Alzheimer’s disease (AD), for example, A β forms aggregates that activate microglia through Toll-like receptor (TLR) and receptor for advanced glycation end products (RAGE). Activated microglia secrete inflammatory mediators such as interleukin (IL)-6, IL-1 β , and tumor necrosis factor (TNF)- α to coactivate astrocytes and to induce neuronal death, which in turn will amplify microglia activation through purinergic P2X7 receptors. Protective microglia mediate A β clearance, removal of cell debris, and promote neuroregeneration. It should be stated that the clear distinction between ‘surveying,’ ‘primed,’ and ‘activated’ microglia may be an oversimplification of the complex molecular guidance of various microglia functional states. (Figure prepared according to Ferrari and Tarelli, 2011; Glass *et al*, 2010; and Moskowitz *et al*, 2010.) COX-2, cyclooxygenase-2; AP-1, activator protein; NF- κ B, nuclear factor- κ B; iNOS, nitric oxide synthase; ROS, reactive oxygen species; NO, nitric oxide; TGF- β , tumor growth factor- β .

through the ‘alternative’ pathway of macrophage activation. M1-type microglia produce tumor necrosis factor- α , IL-1 β , IL-6, nitric oxide, superoxide, hydrogen peroxide, and matrix metalloproteinases. The M1 microglia phenotype has a central role in host defense against pathogens and tumor cells but also triggers damage to healthy neurons (Czeh *et al*, 2011). In contrast, the anti-inflammatory M2 microglia phenotype expresses IL-10 and arginase-1 and promotes tissue remodeling/repair and angiogenesis (Czeh *et al*, 2011). Such a classification in two phenotypes is probably too schematic as the diversity of microglial phenotypes that can be observed *in vivo* is obviously larger (Olah *et al*, 2011). Among open questions are (1) the nosology of intermediate states between ‘surveying’ and ‘activated’ microglia and the existence of ‘primed’ microglia (Ferrari and Tarelli, 2011); (2) the molecular mechanisms responsible for the switch between microglial phenotypes (Parkhurst and Gan, 2010); and (3) the control

exerted by other cells on microglia activation or deactivation. Concerning this latter point, astrocytes have been claimed to modulate the levels of microglial production and release of reactive oxygen species (Min *et al*, 2006; Shih *et al*, 2006). The role of microglia in neurogenesis and aging (reviewed in detail by Gemma *et al*, 2010) pin-pointed out important interactions between neuron-derived FKN (also known as CX3CL1) and microglial expression of its receptor CX3CR1 (also known as FKN receptor) for the control of microglial function. Disruption of this dialog triggers the induction of an M1 microglia phenotype and a subsequent increase in the expression of IL-1 β and TNF- α . Since aging is associated with a decrease in FKN expression, FKN/CX3CR1 chemokine receptor 1 signaling is disrupted in aged individuals and this leads to an increase in microglial activation and overexpression of proinflammatory cytokines (Cardona *et al*, 2006; Gemma *et al*, 2010).

The rational design of molecular imaging targets would greatly benefit from a more thorough understanding of the microglial phenotype–function relationships as discussed in Olah *et al* (2011). It seems likely that future studies will help to better define the different microglia populations, based both on the nature of the stimulus that provokes the initial insult and on subsequent secondary events that influence the microglial phenotype, and that this will help to understand the influence of microglial phenotypes on the outcome of CNS injuries and pathologies (Perry *et al*, 2010). Given our presently limited knowledge of microglial dynamics, it may appear simpler at this stage to distinguish between the activated microglia found in acute inflammation (mechanical brain damage, transient infections, and stroke) and the chronically activated microglia found in neurodegenerative disorders or chronic infections (Parkhurst and Gan, 2010). However, practical biomarkers have yet to be validated for an irrefutable recognition of these two microglial states.

Molecular targets for imaging neuroinflammation

All molecular imaging techniques, including two-/multiphoton and fluorescence microscopy, PET, SPECT, and MRI are used experimentally and clinically to decipher molecular alterations of neurologic disorders. Here we place the emphasis on the molecular imaging targets directly or indirectly connected to NI.

Damage-Associated Molecular Patterns/Pathogen-Associated Molecular Patterns

A major recent breakthrough for *in-vivo* molecular imaging of disease-specific molecular alterations has been the direct visualization of amyloid- β (the DAMP of AD) using thioflavine and multiphoton microscopy (Bacsikai *et al*, 2001). Direct assessment of the amyloid plaque burden and the effect of immunomodulatory therapy helped the development of radiolabeled thioflavine derivatives (e.g., Pittsburgh compound B; [^{11}C]PIB) for imaging A β in humans (Klunk *et al*, 2004). Combined imaging of A β and microglial activation is given special attention in patients with presymptomatic AD and mild cognitive impairment (MCI), in the hope to answer the question whether A β (as DAMP) or activated microglia (as the main parameter of NI) is the disease-driving mechanism leading to ND (Okello *et al*, 2009).

Another DAMP linked to NI is the induction of heat-shock proteins that can be assessed *in vivo* either by reporter systems using heat-shock protein-sensitive promoter systems (Deckers *et al*, 2009; Doubrovin *et al*, 2011) or by directly targeting probes such as [^{18}F]fluoromethyldeoxyspergualin (Ghosh *et al*, 2011).

Toll-Like Receptors, Receptor for Advanced Glycation End Products, Adhesion Molecules, Cytokines, and Chemokines

The past years have witnessed technical advances for investigating the functional associations of TLRs and other pattern recognition receptors using noninvasive fluorescence imaging methods in living cells (reviewed by Triantafilou and Triantafilou, 2012). Independently from imaging, TLRs (e.g., TLR7,8) and cytokines and chemokines (IL-1 β and IL-6) are also being used as biomarkers for tissue outcome after stroke (Brea *et al*, 2011). New TLR-directed therapies (e.g., anti-TLR antibodies) are now evaluated in conjunction with imaging methods that assess tissue outcome (e.g., μ MRI after experimental myocardial infarction; Arslan *et al*, 2010), or with atomic force microscopy imaging to investigate the fibrillar morphology of proinflammatory A β (1 to 42) species (Udan *et al*, 2008).

Microglia Cells

Microglial responsiveness to injury places these cells as diagnostic markers of disease onset or progression (Perry *et al*, 2010). As depicted in Figure 1, various cell surface and mitochondrial receptors expressed in microglia cells are involved in the regulation and function of microglia, and some of these receptors have been used for the development of ligands for imaging.

Translocator protein: Upregulation of the translocator protein 18 kDa (TSPO, formerly called peripheral benzodiazepine receptor or PBR) is a hallmark of activated microglia. Translocator protein is a protein of the outer mitochondrial membrane associated with a voltage-dependent anion channel and a nucleoside transporter. It is primarily involved in the transport of cholesterol into mitochondria, which is the rate-limiting step in the synthesis of steroids and neurosteroids (Rupprecht *et al*, 2010). In the CNS, TSPO is highly expressed in activated microglia, in the choroid plexus and to a lesser extent in reactive astrocytes, in neurons of the olfactory bulb, and in neuroblastoma and glioblastoma cell lines (Rupprecht *et al*, 2010), but its expression is globally low in the normal brain. Translocator protein is a sensitive biomarker for microglial activation and reactive gliosis (Chauveau *et al*, 2008), and binding to TSPO of radiolabeled ligands can be visualized by PET and SPECT by a variety of ‘old’ ([^{11}C](R)-PK11195) and ‘novel’ radioligands, such as [^{11}C]DAA1106, [^{18}F]FE-DAA1106, [^{11}C]DPA-713, [^{18}F]DPA-714, [^{18}F]PBR28, [^{18}F]PBR111, [^{11}C]SSR18075, [^{11}C]CLINME, [^{123}I]CLINDE, and [^{11}C]vinpocetine (Arlicot *et al*, 2008; Banati *et al*, 1997; Chauveau *et al*, 2008, 2011, 2009; Ciarmiello, 2011; Dolle *et al*, 2009; Imaizumi *et al*, 2007; James *et al*, 2008; Kiferle *et al*, 2011; Van Camp *et al*, 2010; Winkeler *et al*, 2010). Comparison of ‘novel’ (e.g., [^{11}C]vinpocetine,

[¹⁸F]DPA-714, [¹⁸F]PBR111, and [¹¹C]SSR180575) with 'old' ([¹¹C](R)-PK11195) TSPO ligands in rodent models and patients with NI revealed improved bioavailability, decreased nonspecific uptake, and higher specific binding of the novel compounds (Chauveau *et al*, 2011, 2009; Van Camp *et al*, 2010; Vas *et al*, 2008). However, different binding affinity patterns have been identified in humans and should be taken into account when interpreting the imaging findings (Owen *et al*, 2011). Moreover, it has to be taken into account that various TSPO ligands might exert different biological effects on microglial activation with respect to microglia proliferation and phagocytosis (Choi *et al*, 2011; Veiga *et al*, 2007).

Further microglial targets: Further microglial targets currently being explored for imaging include the P2X7 receptor (Monif *et al*, 2009; Yiangou *et al*, 2006), the cannabinoid CB2 receptor (Evens *et al*, 2009; Horti *et al*, 2010; Turkman *et al*, 2011; Vandeputte *et al*, 2011), the cyclooxygenase-1 and -2 enzyme (de Vries *et al*, 2008; Shukuri *et al*, 2011), and matrix metalloproteinases (Iwama *et al*, 2011; Pinas *et al*, 2009; Wagner *et al*, 2007). The CB2 receptors can be targeted by both radiolabeled and paramagnetic imaging probes (te Boekhorst *et al*, 2010).

There is obviously a discrepancy between the multitude and diversity of cellular and molecular players in NI on the one side and the relatively small number of currently established molecular tracers on the other side. The TSPO (PBR) imaging is a preferred method of many experimental and clinical studies and to develop more specific TSPO tracers may be helpful. Nevertheless, in a way the progress made for example by DPA-714 as compared with PK11195 obscures the fact that tracers targeting other mechanisms are still very rare to date.

Infiltrating Neutrophils, Macrophages, and T Lymphocytes

The recruitment of circulating leukocytes to the site of injury is induced by upregulation of endothelial adhesion molecules (P/E-selectin, intercellular adhesion molecule 1 (ICAM-1), vascular cell adhesion molecule 1 (VCAM-1); Man *et al*, 2007). Various molecular contrast media to target selectin, ICAM, and VCAM expression have been developed. They are based, for example, on (1) ¹²⁵I-labeled gold nanorods (GdNRs) or ⁶⁴Cu-labeled nanoparticles conjugated with anti-ICAM-1 antibody (Rossin *et al*, 2008; Shao *et al*, 2011); (2) GdNRs for photoacoustic detection (Ha *et al*, 2011); (3) anti-CD34 microbubbles as targeted ultrasound contrast agents (Liu *et al*, 2011); and anti-ICAM-targeted echogenic immunoliposomes (Kiessling *et al*, 2009; Kim *et al*, 2010a); (4) anti-VCAM antibody conjugated microparticles of iron oxide (Hoyte *et al*, 2010; Leung, 2011; McAteer *et al*, 2007); or (5) double-conjugated fluorescent microspheres in conjunction

with laser scanning ophthalmoscopy (Sun *et al*, 2010). Determinations by enzyme-linked immunosorbent assay of soluble E-selectin, ICAM-1, VCAM-1, together with measurements of matrix metalloproteinase-9, tissue inhibitor of metalloproteinase 1, plasma TNF- α and IL-6, are also used as biomarkers for NI in association with conventional MRI to predict tissue injury and stroke severity in early ischemia (Bogoslovsky *et al*, 2011).

Studies of the kinetics of T-cell motility and transmigration by direct cell imaging by dynamic two-photon microscopy (Soriano *et al*, 2011; Svensson *et al*, 2010) have revealed a sequential involvement of endothelial ICAM-1 and VCAM-1 in mediating shear-resistant T-cell arrest, followed by endothelial ICAM-1 and ICAM-2 mediating T-cell crawling to sites permissive for diapedesis across BBB endothelium (Steiner *et al*, 2010). Sorokin has pointed out the importance of extracellular matrix components influencing immune cell infiltration through the BBB (Sorokin, 2010).

Unspecific labeling of leukocytes or macrophages is performed *ex vivo* by incubation of white-blood cells with ¹¹¹In- or ^{99m}Tc-labeled compounds for SPECT or [¹⁸F]FDG for PET imaging (reviewed by Wunder *et al*, 2009), or *in vivo* using MRI nanosized/ultrasmall agents such as iron-oxide nanoparticles (Stuber *et al*, 2007), liposomes encapsulating monodisperse single core superparamagnetic iron-oxide particles (Soenen *et al*, 2010) or paramagnetic lanthanide-based agents (Castelli *et al*, 2009; reviewed by Stoll and Bendszus, 2010). The extent of macrophage labeling in relation to clearance by the reticulo-endothelial system depends on particle size, coating, and route of *in-vivo* delivery. The drawbacks of unspecific cell labeling methods are the possible leakage of the label from the cells and unspecific accumulation in the brain due to a disrupted BBB (Stoll and Bendszus, 2010; Wunder *et al*, 2009). These issues can be overcome by using genetic engineering of cells expressing artificial marker genes, in which specific accumulation and trapping of the label occurs selectively (Costa *et al*, 2001; Waerzeggers *et al*, 2008, 2009). Another approach is to conjugate a fluorescent probe, such as Cy5.5, by the HIV-TAT system to T lymphocytes, which are then adoptively transferred into experimental animals (Berger *et al*, 2007). Finally, [¹⁸F]FDG μ PET/computed tomography can follow experimental autoimmune encephalitis (EAE) coinciding with increased glucose consumption, presumably by infiltrating immune cells in the spinal cord (Radu *et al*, 2007).

Alterations of and Within the Blood-Brain Barrier

Changes in the vascular permeability and the BBB can be assessed by gadolinium-diethylenetriaminepentaacetic acid (Gd-DTPA) and MRI or by ^{99m}Tc-pertechnetate (^{99m}TeO₄) or ^{99m}Te-DTPA and SPECT *in vivo* (reviewed by Wunder *et al*, 2009). Magnetic reso-

nance imaging with Gd-DTPA is used on a routine clinical basis to assess the activity and extent of BBB disruption after ischemic stroke, and during the disease course of encephalitis, MS, and gliomas, and it may serve as noninvasive imaging biomarker to assess the efficiency of treatment with corticosteroids.

Astrocytes and Monoamine Oxidase Type B

Monoamine oxidase type B is an enzyme located at the outer mitochondrial membrane primarily in astrocytes and serotonergic neurons. Monoamine oxidase type B catalyzes the deamination of monoamines, thereby influencing neurotransmitter concentrations, and its activity detected with [¹¹C]-L-deprenyl indicates increased monoamine oxidase type B content in reactive and proliferating astrocytes (Fowler *et al*, 1987; Gulyas *et al*, 2011). The combined assessment of activated microglia and astrocytes is of special interest, as not only microglia but also glial fibrillary acidic protein-immunoreactive cells were found to correlate with *in-vivo* [¹¹C]PIB binding in postmortem brains of patients with AD (Kadir *et al*, 2011). Limited to the experimental setting, transgenic mice carrying the luciferase gene under control of the glial fibrillary acidic protein promoter detect reactive astrocytes *in vivo* (Cordeau *et al*, 2008; Luo *et al*, 2008).

Imaging neuroinflammation in neurologic diseases

This part summarizes experimental and clinical neuroimaging studies of NI during the course of major neurologic diseases, i.e., stroke, MS, AD, PD, as well as in amyotrophic lateral sclerosis (ALS), epilepsy, encephalitis, and gliomas.

Stroke: Stroke is the most common neurologic disorder, the third leading cause of death in the United States and the leading cause of serious, long-term disability. In 80% of stroke cases, occlusion of a cerebral vessel leads to cerebral ischemia and only immediate establishment of reperfusion can substantially improve functional outcome (NIND, 1995; Sobesky *et al*, 2007). Occlusion of a cerebral artery induces ischemic infarct of the corresponding cerebral territory, with a cascade of metabolic and inflammatory consequences that extend into the peri-infarct zone (penumbra). Activation of microglia and astrocytes and recruitment of leukocytes contribute in part to the cell damage (Dirnagl *et al*, 1999; Macrez *et al*, 2011). A retrograde degeneration of neurons as well as anterograde Wallerian degeneration of axons occurs in cerebral areas distant from the focal ischemia-induced inflammatory area. This is accompanied by the activation of microglia along the degenerating fiber tracts, which may persist for several years (Perry *et al*, 2010).

As reviewed recently (Allan *et al*, 2005; Macrez *et al*, 2011; Rivest, 2009; Wang *et al*, 2007), DAMP-induced synthesis of proinflammatory cytokines (TNF- α , IL-1 β , and IL-6), microglial activation and leukocyte infiltration have a major role in the pathogenic events after cerebral ischemia: cellular reactions determine the extent of ischemia-induced tissue damage but are also necessary for tissue repair and regeneration in the advanced stage. Tumor necrosis factor- α and IL-1 β are rapidly produced in response to ischemic injury and directly damage neurons, endothelial and glial cells, and recruit circulating leukocytes to the site of injury by inducing upregulation of endothelial adhesion molecules (e.g., P/E-selectin, ICAM-1, and VCAM-1). Cellular infiltration into the brain, at first of neutrophils and later of macrophages and lymphocytes (Gelderblom *et al*, 2009) contributes to postischemic tissue damage through activation of nitric oxide synthase and cyclooxygenase-2 pathways. While gross lymphocyte infiltration is associated with deleterious effects in stroke, regulatory T cells seem to have a cerebroprotective function by counteracting TNF- α and IFN- γ production (Liesz *et al*, 2009; Lo, 2009). Microglial activation triggers phagocytosis of necrotic cells and secretion of neurotrophic factors (brain-derived neurotrophic factor and insulin-like growth factor; Madinier *et al*, 2009). To what extent bone marrow derived macrophages precursor cells from the blood can infiltrate the brain and contribute to tissue damage or repair is still a matter of debate and further research (Rivest, 2009; Shichita *et al*, 2009; Yong and Rivest, 2009). The exact mechanisms that drive macrophage recruitment to the CNS need to be further characterized to explore the possibility to target these cells for therapy. Alternatively, therapeutic strategies that interfere with DAMP-receptor pathways (TLRs) might be a promising approach to restrict the inflammation processes (Macrez *et al*, 2011).

As many of the mechanisms and pathways described in stroke pathogenesis may be either detrimental or beneficial depending on the temporal disease dynamics, *in-vivo* imaging of the temporal profile of key events (e.g., TLR activation, microglial activation, and lymphocyte infiltration) appears an important prerequisite for the development and implementation of new therapeutic paradigms (Fagan *et al*, 2010). Overall, a better understanding of the specific roles of inflammatory cells is needed, in particular with respect to the kinetics of their recruitment and their relative contribution to the evolution of stroke (Macrez *et al*, 2011).

This is particularly important for a more precise evaluation of the current therapeutic attempts to modify or alter the poststroke inflammation to improve the clinical outcome. Whereas imaging in the acute phase of stroke by computed tomography, MRI, and PET aims to delineate hypoperfused 'tissue at risk' surrounding the infarcted territory (penumbra, mismatch), which is still viable and may be rescued by therapy (Zaro-Weber *et al*, 2010), imaging

at later stages after ischemic stroke targets mostly ischemia-induced NI. The MRI-based approaches use systemically administered ultrasmall superparamagnetic iron oxide (USPIO) to track macrophage infiltration into the ischemic area (Stoll and Bendzus, 2010). This approach is however complicated by passive diffusion of free USPIO through a defective BBB (Desestret *et al*, 2009). A myeloperoxidase-activatable paramagnetic sensor has been developed and used experimentally to noninvasively assess leukocyte- and microglia-related myeloperoxidase activity within the infarct area (Breckwoldt *et al*, 2008). Attempts for combined USPIO based with perfusion-weighted and diffusion-weighted MR imaging in the clinical application are ongoing. The first studies have revealed conflicting results with regards to the high variability of extent and distribution of USPIO enhancement in relation to infarct size and tissue outcome (Nighoghossian *et al*, 2007; Stoll and Bendzus, 2010).

Activated microglia have been the target of a number of experimental and clinical studies focusing on studying NI after focal cerebral ischemia. In experimental models of stroke, activated microglia revealed by [¹¹C](R)-PK11195 and μ PET are located mainly in the core and in the margin of focal cerebral ischemia between 4 and 7 days after transient ischemia (Rojas *et al*, 2007; Schroeter *et al*, 2009). Moreover, activated astrocytes were observed in a rim surrounding the epicenter of the lesion (Rojas *et al*, 2007). Using [¹⁸F]DPA-714 and μ PET imaging in a rat model of transient ischemia, the time course of TSPO expression reflecting microglia and macrophage activation within the first 3 weeks after unilateral middle cerebral artery occlusion was described (Figure 2). Expression of TSPO in microglia and macrophages increased until 7 to 11 days after stroke and decreased later. In contrast, the centripetal migration of astrocytes toward the lesion reflecting formation of a scar was correlated with TSPO expression in astrocytes at later times (Martin *et al*, 2010). Interestingly, minocycline treatment of middle cerebral artery occlusion rats was able to reduce TSPO expression as shown by [¹⁸F]DPA-714 PET imaging, but this reduction did not correlate with a reduction in the size of the infarct (Martin *et al*, 2011). Interestingly, in a model of migraine in rats, [¹¹C](R)-PK11195-PET showed TSPO activation after generation of unilateral cortical spreading depression, indicating that microglia cells are activated also in response to a nociceptive stimulus (Cui *et al*, 2009).

Expression of TSPO has been imaged using [¹¹C](R)-PK11195 and PET in relatively small groups of patients with ischemic stroke (Pappata *et al*, 2000, $n=7$; Gerhard *et al*, 2005, $n=6$; Price *et al*, 2006, $n=4$; Radlinska *et al*, 2009, $n=21$), or with major risk factors of stroke (atherosclerosis, hyperlipidemia, and obesity; Drake *et al*, 2011, $n=4$). Between 3 and 150 days after stroke onset, microglia activation reflected by TSPO ligand uptake can be observed at the primary lesion site, in peri-infarct regions as well as

in remote locations, and even in the contralateral hemisphere indicative of pathological changes after Wallerian degeneration (Gerhard *et al*, 2005; Radlinska *et al*, 2009). Based on these results, it has been suggested that therapeutic targeting of NI may be extended to late time windows (Price *et al*, 2006). The consequences of subcortical stroke lesions with or without affection of the pyramidal tract were compared in an elegant study by Radlinska *et al*, (2009) combining [¹¹C](R)-PK11195-PET with diffusion tensor imaging. A remote activation of microglia was found only in patients in whom the pyramidal tract was affected, and this activation was anterograde to the lesion 2 weeks after stroke. Longer follow-up times showed that local microglia activity around the infarct area decreased over time, but that remote microglial activation along affected pyramidal tracts persisted at 6 months (Figure 3; Thiel *et al*, 2010). The anterograde microglia activity in the brain stem was linearly related to the extent of pyramidal tract damage in the early and chronic phase after stroke. Interestingly, different microglia activation patterns locally and at distant areas were able to predict outcome, i.e., the remote inflammatory activity was positively related to outcome, indicating a possible neuroprotective role or repair function of microglia along the tract portions undergoing Wallerian degeneration (Thiel *et al*, 2010). Finally, brain inflammation was found in patients with a constellation of chronic systemic inflammatory conditions, even in the absence of any cerebrovascular event, indicating that systemic inflammation can drive brain inflammation before stroke in a so-called 'primed' inflammatory environment (Drake *et al*, 2011).

Multiple sclerosis: Multiple sclerosis is the most common inflammatory demyelinating disease of the CNS with a prevalence ranging between 20 and 150 cases for 100,000 inhabitants. It is pathologically characterized by inflammation, demyelination, gliosis, and axonal injury. T cells and macrophages react with myelin antigens and initiate an immune response (secretion of proinflammatory cytokines, release of toxins, and activation of microglia) that leads to demyelination and axonal damage.

As has been nicely summarized by Ajami *et al* (2011) and reviewed by Kiferle *et al* (2011), EAE is a well-studied mouse model of the human disease characterized by extensive infiltration of the CNS by inflammatory cells. Initiation of EAE involves the activation of myelin-specific Th1 or Th17 cells, which in turn trigger the expansion of resident microglia and the recruitment of blood-borne myelomonocytic cells. The fundamental mechanisms leading to the distinct stages of relapsing and remitting disease and to the associated physical impairment remain controversial (Ajami *et al*, 2011). Using a combination of parabiosis and myeloablation to replace circulating progenitors without affecting CNS-resident microglia, a strong correlation was found between monocyte infiltration and

progression to the paralytic stage of EAE, which can be blocked by the inhibition of chemokine receptor-dependent recruitment of monocytes to the CNS (Ajami *et al*, 2011). These results point to the essential and disease-driving function of infiltrating cells in the pathogenesis of EAE and MS (Ajami *et al*, 2011). During early disease, CD4-positive T cells and endogenous microglia activation are responsible for disease initiation before the appearance of functional impairment. It is only the appearance of infiltrating monocytes that correlates with substantial disability, and impairing the chemokine (C-C motif) receptor 2-dependent recruitment of these cells prevents progression from very mild to severe disease. The recruitment and activation of macrophages and microglia have an important role in the removal of damaged tissue and in the facilitation of neural repair but, despite their crucial role in host defense, overactivated microglia induce an excess production of cytotoxic factors, which enhance and amplify the neuronal

damage (Figure 1; Kiferle *et al*, 2011). Thus, in EAE, the infiltration of monocytes appears to represent a pathogenic overreaction of the innate immune system (Ajami *et al*, 2011). Therefore, imaging the passage of immune cells across the BBB would allow the direct assessment of the effects of novel therapeutics aiming to block the transmigration of immune cells into the CNS for treating CNS-directed autoimmune diseases (Ajami *et al*, 2011; Luster *et al*, 2005).

Various MRI-based techniques can assess disease activity and effect of therapy in patients with MS. Conventional T1-weighted Gd-enhanced MRI addresses acute disease activity and T2-weighted MRI quantifies overall tissue alterations depicted as hyperintense lesions (NI and neuroaxonal damage) (Bakshi *et al*, 2008; Hayton *et al*, 2012). Other image-based primary outcomes in phase II trials of neuroprotective and reparative strategies in MS are (1) changes in whole-brain volume to gauge general cerebral atrophy as measure of neuroaxonal loss;

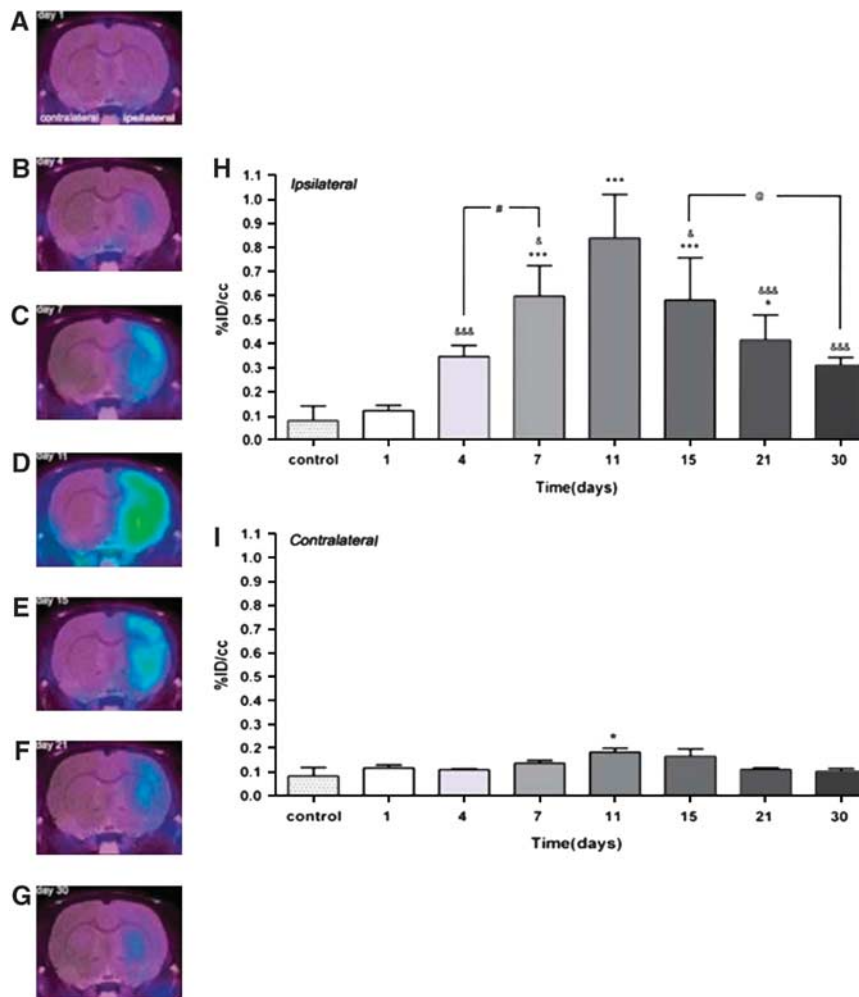
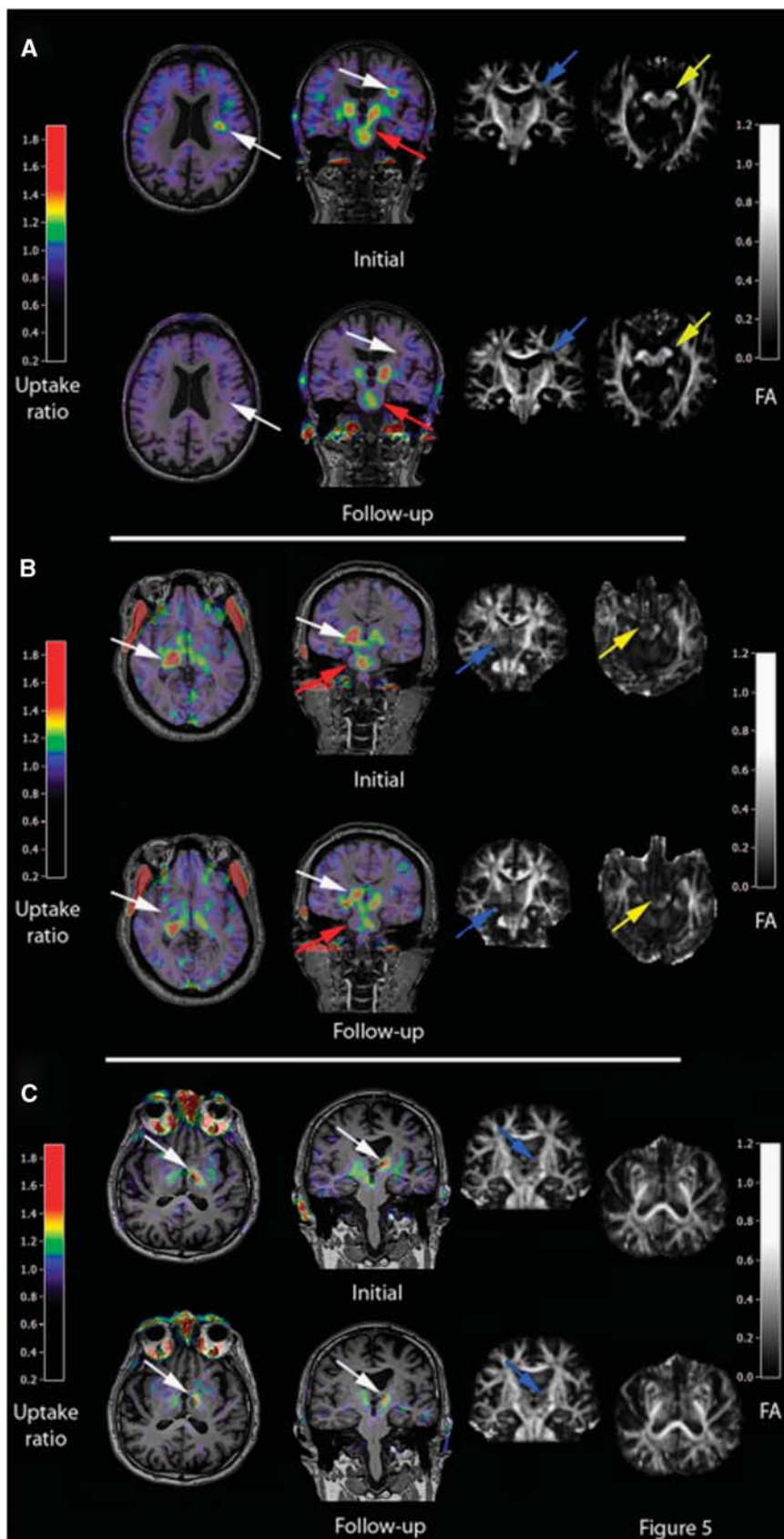


Figure 2 Time course of microglia activation after experimental ischemia as determined by [¹⁸F]DPA-714 and μPET. Panels (A–G) depict images of different rats showing [¹⁸F]DPA-714 accumulation in the ischemic hemisphere at various time points (1 to 30 days after stroke). Panels (H, I) depict quantitative [¹⁸F]DPA-714 accumulation in ischemic (H) versus control (I) hemisphere showing the peak intensities of microglia activation in the 7 to 15 day after stroke period. (Figure reprinted with permission from Martin *et al*, 2010.) ID, injected dose; PET, positron-emission tomography.



(2) T1 hypointensity and magnetization transfer ratio to monitor the evolution of lesion damage; and (3) optical coherence tomography findings to evaluate the anterior visual pathway (Barkhof *et al*, 2009).

In addition to conventional MR sequences used in improved model systems (Tourdias *et al*, 2011), molecular NI-targeted imaging technologies have used USPIO particles to image macrophage and T-cell infiltration in EAE models of MS (Chin *et al*, 2009; Stoll and Bendszus, 2010). The myeloperoxidase-activatable paramagnetic sensor mentioned above has been used to follow T1-weighted signal increase in areas of active lesions with myeloperoxidase expression (Chen *et al*, 2008). More and smaller lesions are detected by this approach than with conventional T1- and T2-weighted MRI. Whether these novel molecular imaging approaches will translate into clinical applications remains to be demonstrated. A first attempt in that direction was reported by Vellinga *et al* (2008) who showed, in patients with active MS, that USPIO-enhanced MRI may reveal subtle inflammatory activity not visible by conventional MRI and unrelated to Gd-DTPA enhancement (Figure 4). Similar results were obtained with improved amphiphilic macrocyclic Gd complexes that allow a more sensitive detection of BBB changes than Gd-DTPA, indicating that complementary information is revealed by both imaging methods (Ladewig *et al*, 2009; Stoll and Bendszus, 2010).

Experiments based on genetically engineered T cells expressing luciferase have shown that autoantigen-specific CD4+ T cells inhibited inflammation and promoted immunotherapy in the EAE model (Costa *et al*, 2001). Direct visualization of the local interaction between immune and neuronal cells was shown by two-photon microscopy in living mice subjected to EAE (Siffrin *et al*, 2010; Figure 5). Direct interaction of Th17 cells specific for myelin/oligodendrocyte glycoprotein with neuronal cells in demyelinating lesions was associated with extensive axonal damage. By combining intravital microscopy with confocal and electron microscopy it could be excellently shown that Th17 cells induce severe, localized, and partially reversible fluctuations in neuronal intracellular Ca²⁺ concentration as an early sign of neuronal damage, pointing at the key role of the Th17-cell effector phenotype for neuronal dysfunction in chronic inflammation (Siffrin *et al*, 2010). Moreover, two-photon microscopy provided local quantification of T-cell dynamics, tissue infiltration, and interaction *in vivo* (Bartholomaeus *et al*, 2009; Kim *et al*, 2010b; Siffrin *et al*, 2010). An excellent review on this topic has appeared recently (Kawakami and Flugel, 2010).

Microglial activation in patients with MS has been studied with [¹¹C](R)-PK11195 and PET but so far only in a limited number of patients (Banati *et al*, 2000, n = 12; Debruyne *et al*, 2003, n = 22; Vas *et al*, 2008, n = 4; Versijpt *et al*, 2005, n = 22). Radiotracer binding was increased in areas of acute and relapse-associated

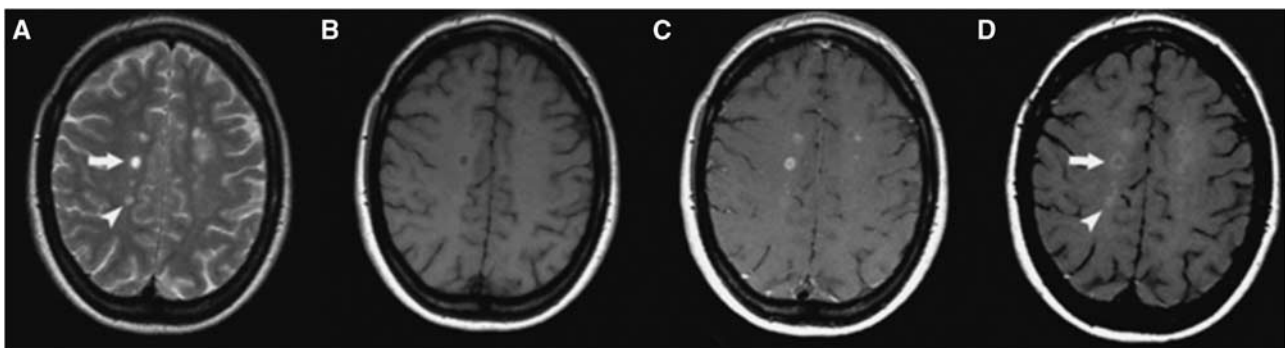


Figure 4 Cross-sectional patterns of lesion enhancement in patients with multiple sclerosis (MS) as detected by magnetic resonance imaging (MRI). (A) Pre-Gd T2SE images showing MS lesions. (B) Pre-GdT1-w images showing hypointensity of some of the MS lesions. (C) Some lesions are Gd-DTPA positive. (D) Post-USPIO images show a Gd-DTPA-positive/USPIO ring-enhancing lesion (arrow) and a Gd-DTPA-negative/focally USPIO-positive lesion (arrowhead). (Figure reprinted with permission from Vellinga *et al*, 2008.) USPIO, ultrasmall superparamagnetic iron oxide; Gd-DTPA, gadolinium-diethylenetriaminepentaacetic acid.

Figure 3 Location and extent of microglia activation after focal subcortical ischemia as determined by [¹¹C](R)-PK11195 and HRRT-PET in conjunction with diffusion tensor imaging (DTI) MRI. Various microglia activation patterns can be observed after focal cerebral ischemia in humans depending on the affection of the pyramidal tract and the primary lesion size. Acutely activated microglia at the infarct site that decreases after 6 months (A) are related with good clinical outcome although microglia activation in the brain stem as sign of anterograde axonal degeneration persists. Lesions that cause a complete transection of the pyramidal tract as determined by DTI are related to persistent microglia activity at the site of infarction and in the brain stem at 6 months and are related to a poor outcome (B). In patients where the pyramidal tract is not affected, microglia activation occurs only at the infarct site and not in the brain stem (C). (Figure reprinted with permission from Thiel *et al*, 2010.) FA, fractional anisotropy; HRRT, high resolution research tomograph; MRI, magnetic resonance imaging; PET, positron-emission tomography.

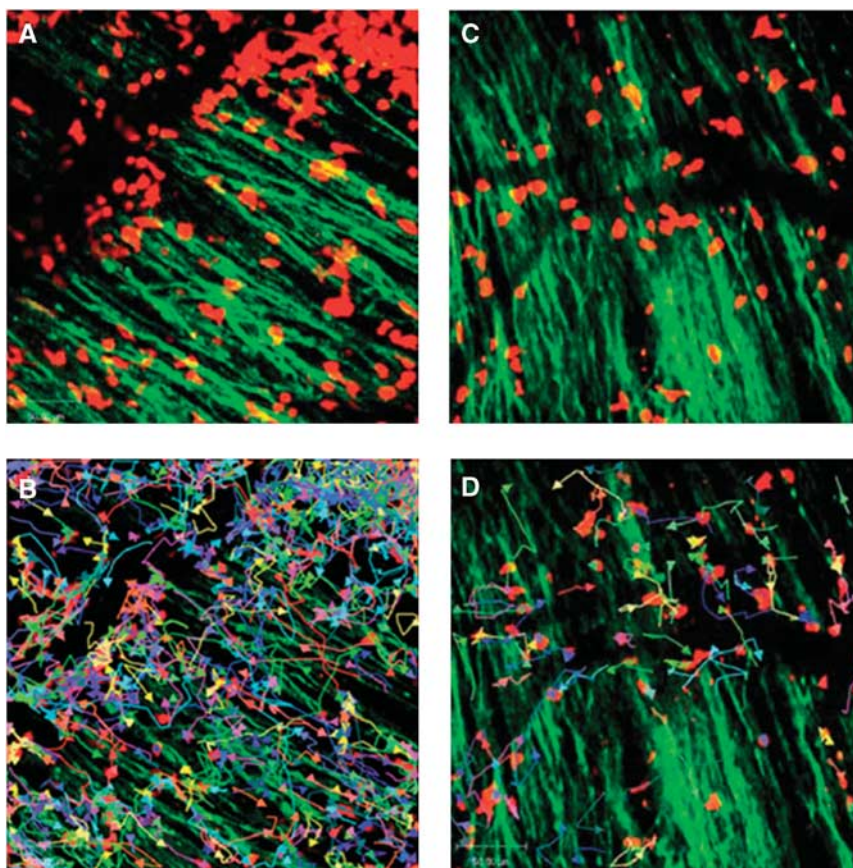


Figure 5 Immune infiltrates in demyelinating lesions as depicted by two-photon laser scanning microscopy (TPLSM) are highly dynamic and show different motility patterns in distinct disease stages. **(A)** TPLSM of a representative brainstem lesion in the onset of EAE in B6.tdRFP/B6.Thy1.EGFP (green: EGFP, neuronal processes; red: CD45 + .tdRFP cells) (maximal intensity projection of a volume of 70 μ m thickness and 36 planes, time point 0). **(B)** Automated single-cell tracking of CD45 + .tdRFP cells. **(C)** TPLSM of a representative brainstem lesion in the onset of 2d2.tdRFP Th17 cells (red)-induced passive EAE in B6.Rag1/Thy1.EGFP. **(D)** Automated single-cell tracking of 2d2.tdRFP Th17 cells. (Figure reprinted with permission from Siffrin *et al*, 2010).

inflammation detected by Gd-DTPA enhanced T1-weighted MRI. Interestingly, a significant increase in [3 H](R)-PK11195 or [11 C](R)-PK11195 binding on activated microglia outside the histopathologically or MRI defined borders of MS plaques was observed in (1) cerebral central gray-matter areas that are not normally reported as sites of pathology in MS (Banati *et al*, 2000) as well as in (2) normal appearing white matter (Debruyne *et al*, 2003). This suggests that imaging microglial activation in patients with MS may serve as a complementary biomarker for disease activity staging. Engineered mouse models show that the activation of astroglia and microglia may occur before obvious clinical signs appear in the EAE model of MS (Luo *et al*, 2008, 2007). A recent study of cuprizone-induced NI in C57BL/6 mice showed positive [123 I]-CLINDE accumulation in various brain regions during the phase of demyelination, and a decreased uptake during the phase of remyelination correlating with activated astroglia and microglia cells (Mattner *et al*, 2011). Similarly, Abourbeh *et al* (2012) have shown that PET imaging with [18 F]DPA-714 can detect the microglial activation in the spinal cord of EAE-induced rats. In summary, visualizing activated

microglia in gray matter gives TSPO tracers a promising role in improved understanding of cortical MS pathologies in humans (Kiferle *et al*, 2011).

Neurodegeneration: Neurodegenerative diseases, such as AD, PD, frontotemporal dementia, Huntington's disease, and ALS, are the most common chronic neurologic disorders and they pose an increasing burden on our aging populations. Alzheimer's disease alone affects at least 34 million people worldwide and its prevalence is expected to triple in the next decades. In AD, histology shows amyloid- β ($A\beta$) plaques, neurofibrillary tangles, neuronal loss, and atrophy. Symptoms of AD are loss of memory, progressive impairment of cognition, and neuropsychiatric disturbances. In PD, progressive loss of pigmented dopaminergic neurons in the substantia nigra and other brain stem nuclei occurs and leads to dopamine depletion in the striatum, especially in the putamen. Patients with PD develop motor disturbances (bradykinesia, rigidity, tremor, and postural instability), autonomic dysfunction, cognitive impairment, and depression. Amyotrophic lateral sclerosis is the most common motor neuron disease,

affects relatively young patients (~55 years) and has a projected lifetime risk of 1/2,000. Degeneration of motor neurons leads to progressive muscle wasting/weakness, spasticity, and respiratory weakness leading to death usually within 2 to 5 years. Common to AD, PD, and ALS, (1) normal life expectancy is reduced; (2) impairment of cognitive and motor functions is devastating at the personal and family level and has major impact on the health-care system; (3) only symptomatic (not curative) treatment options are presently available; (4) the impairment of cell's protein turnover machinery leads to the deposition of extracellular and intracellular protein aggregates, which in turn induce NI with the recruitment of cells of the immune system (microglia) contributing to neurotoxicity and degeneration of neurons (Figure 1); (v) diagnosis is based on clinical symptoms appearing at a late stage in the course of the disease: in PD, for example, clinical signs appear when over 50% of disease-specific neurons (nigrostriatal projections) are already damaged.

As reviewed by Rivest (2009), Heneka *et al* (2010b), Perry *et al* (2010), and Glass *et al* (2010), in AD, A β forms extracellular aggregates that activate microglia through TLRs and receptor for advanced glycation end products (Figure 1), leading to the activation of nuclear factor- κ B and activator protein with subsequent production of reactive oxygen species and release of cytokines (TNF- α , IL-1 β , and IL-6) that stimulate astrocytes, which amplify the inflammatory/neurotoxic effects. All these events eventually contribute to neuronal cell death, which in turn leads to the release of ATP with further activation of microglial cells through purinergic P2X7 receptors. However, α - and β -secretases have nuclear factor- κ B binding sites in their promoters, and the expression of proinflammatory cytokines appears upregulated in neurons, serving for more production of A β in a 'vicious cycle' between inducers, transducers, and effectors. In PD, aggregates of α -synuclein (α -SYN) form intermediate-state oligomers that, when released from neurons, activate microglia through TLR-independent mechanisms. In ALS, aggregates of SOD1 (superoxide dismutase 1) can induce inflammatory responses by microglia through TLR2 and CD14 (Glass *et al*, 2010). However, some authors have stated that extracellular amyloid deposits or chronic neurodegeneration on their own are not able to elicit a robust proinflammatory response (Perry *et al*, 2010).

Although microglia activation seems to be induced in a disease-specific manner, there is a remarkable convergence in the mechanisms of sensing, transduction, and amplification of the inflammatory process. It should be pointed out that, while sustained inflammatory responses involving microglia and astrocytes are likely to contribute to disease progression, microglia also have a neuroprotective role by mediating the clearance of A β (Figure 1). Therefore, a still unresolved question is how to control and modulate microglial activity, in a safe

and efficient manner, to slow down or reverse the course of ND. A better understanding of the brain's innate immune response will help to develop strategies, e.g., based on synthetic TLR agonists, to selectively activate neuroprotective microglia functions while avoiding detrimental effects on neurons (Rivest, 2009).

Positron-emission tomography and MRI have contributed a broad spectrum of imaging findings in ND: (1) altered cerebral glucose consumption (AD); (2) altered neuronal transmission within the cholinergic, dopaminergic, serotonergic, and other neurotransmitter systems (AD and PD); (3) accumulation of A β and tau proteins (AD and PD); (4) degeneration of central motor neurons (ALS) (Berti *et al*, 2011).

Imaging studies of NI in ND have mostly focused on microglial activation. As pointed out in Figure 1, A β deposition elicits a vicious cycle of NI and neuronal destruction, where microglia have the central role. Positron-emission tomography with [¹¹C](R)-PK11195 showed quantitatively the *in-vivo* microglial activation involving the entorhinal, temporoparietal, and cingulate cortices ($n=8$ AD, $n=1$ MCI, $n=6$ normal) (Cagnin *et al*, 2001a). In patients with frontotemporal dementia, PET showed [¹¹C](R)-PK11195 binding in the frontal, medial temporal, and subcortical regions (Cagnin *et al*, 2004). In APP/PS1 mice, [³H](R)-PK11195 binding correlated with the microglial activation determined by immunohistochemistry (Venneti *et al*, 2009). Kinetic modeling has shown specific binding potentials (BPs) of [¹¹C](R)-PK11195 in the human brain (Schuitemaker *et al*, 2007) using a simplified reference-tissue model (Kropholler *et al*, 2007). The inclusion of an additional vascular component effectively modeled disease-specific vascular changes but amplified the BP more in AD than in controls because of a decrease in tracer binding to the vasculature in the AD cohort (Tomasi *et al*, 2008). It should be pointed out that the cerebellum as a reference tissue creates problems because of its proximity to vascular sinuses containing TSPO. Therefore, several teams are exploring clustering methods using a database of tissue kinetics to identify healthy gray-matter voxels that are used as a reference (Turkheimer *et al*, 2007). In double tracer studies of patients with AD using [¹¹C]PIB together with [¹¹C](R)-PK11195, the distribution of the amyloid load and the microglial activation were correlated with the cognitive status ($n=13$) (Edison *et al*, 2008). [¹¹C]PIB-PET revealed a significant twofold increase in the amyloid load in frontal, temporal, parietal, occipital, and cingulate cortices, while [¹¹C](R)-PK11195-PET detected significant 20% to 35% increases in microglial activation in the same cortical areas. Importantly, the mini mental state examination scores in AD patients correlated with the levels of cortical microglial activation but not with the amyloid load, supporting the view that microglia activation is related to disease activity and progression (Edison *et al*, 2008) even at a stage of presymptomatic disease such as

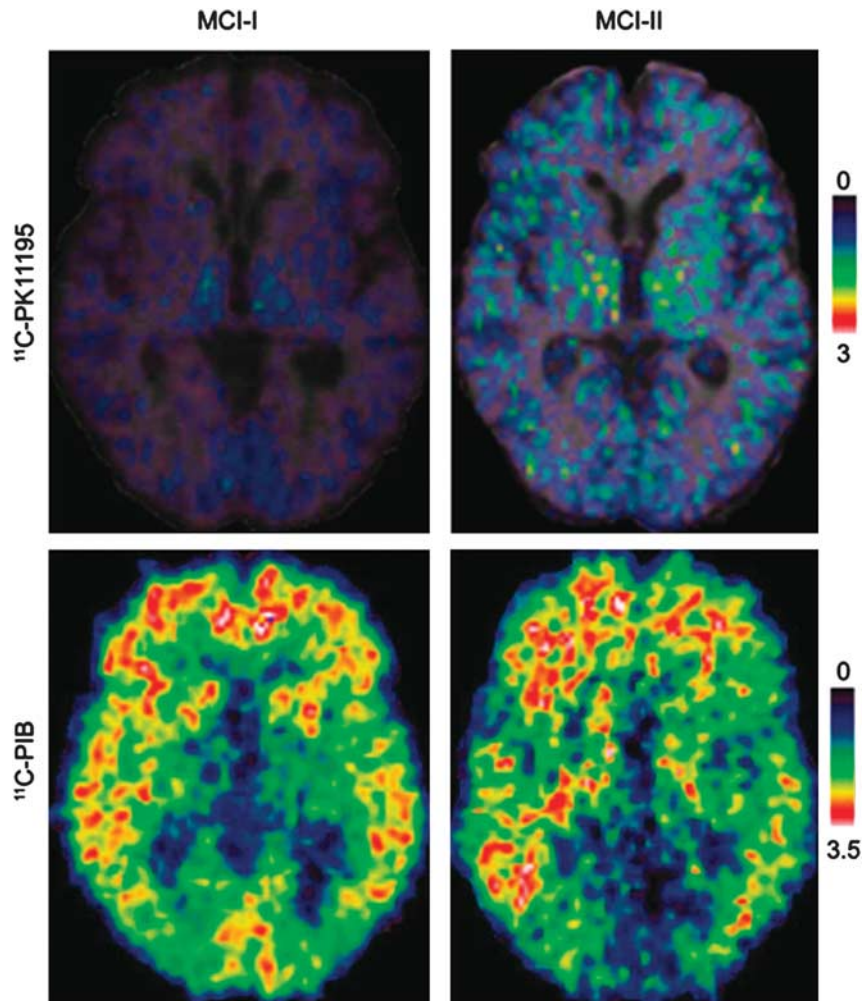


Figure 6 Early detection of amyloid- β as damage-associated molecular pattern (DAMP) and microglia activation in patients with mild cognitive impairment by positron-emission tomography (PET). [^{11}C]-(*R*)-PK11195 binding potentials (BPs) and corresponding [^{11}C]PIB ratio images in two patients with PIB-positive mild cognitive impairment (MCI). MCI-I has normal PK binding and MCI-II has increased PK binding suggesting that $A\beta$ deposition may be related but also unrelated to microglia activation at very early disease stages. The detection of microglial activation in patients with MCI suggests that anti-inflammatory therapies may be relevant to the prevention of AD. (Figure reprinted with permission from Okello *et al*, 2009.)

MCI (Okello *et al*, 2009; Figure 6). A recent study explored the relationship between $A\beta$ accumulation and NI in relation to glucose metabolism in patients with early AD ($n=11$) (Yokokura *et al*, 2011). A negative correlation was found between dementia score and the [^{11}C](*R*)-PK11195 BP, but not between score and [^{11}C]PIB uptake in the limbic, precuneus and prefrontal regions. Direct comparisons showed a significant negative correlation between [^{11}C](*R*)-PK11195 and [^{11}C]PIB BPs in the posterior cingulate cortex, the region that manifested the most severe reduction in [^{18}F]FDG uptake. The lack of coupling between microglial activation and amyloid deposits may indicate that $A\beta$ accumulation may not always be the primary cause of microglial activation, but rather the negative correlation present in the posterior cingulate cortex suggests that microglia can show higher activation during the production of $A\beta$ in early AD (Yokokura *et al*, 2011). Considering that

norepinephrine, which is decreased in depression, has been shown to suppress $A\beta$ -induced cytokine and chemokine production and to increase microglia migration and phagocytosis of $A\beta$ (Heneka *et al*, 2010a), while antidepressants have been shown to limit amyloid brain deposition in mice through decrease in TNF- α (Chavant *et al*, 2010), it cannot be excluded that NI could be the missing link between aging depression and an increased risk of ND (Frank-Cannon *et al*, 2009).

Studies in experimental animals and patients with PD showed that NI, as determined by [^{11}C](*R*)-PK11195-PET, is also a significant component of progressive dopaminergic degeneration (Cicchetti *et al*, 2002; Gerhard *et al*, 2006), even though it may be difficult to quantify in the clinical situation (Bartels *et al*, 2010). Nevertheless, 'imaging-guided' drug intervention studies have been initiated, e.g., in patients with multiple system atrophy focusing on

minocycline-induced alterations of microglia activation *in vivo* (Dodel *et al.*, 2010).

Microglial activation in ALS has been studied only in a very limited number of patients ($n=10$) (Turner *et al.*, 2004). Increased binding was found in motor cortex, pons, dorsolateral prefrontal cortex, and thalamus, and a significant correlation between binding in the motor cortex and the burden of clinical upper motor neuron signs was shown ($r=0.73$, $P=0.009$). These findings indicate that cerebral microglial activation during the evolution of ALS can be detected *in vivo*, and support the view that cerebral pathology is widespread in this disease (Turner *et al.*, 2004). In an elegant imaging-guided study by Keller *et al.*, it was shown in the glial fibrillary acidic protein-luc/SOD1^{G93A} reporter mouse model of ALS that interfering with microglia activity by means of minocycline at various disease stages either ameliorates (at early stages) or enhances (at later stages) disease activity and symptoms. Pretreatment with minocycline delayed disease progression and increased mean survival, whereas minocycline administered at later stages of disease was associated with significant alterations in astrocyte and microglia activation profiles (Keller *et al.*, 2011). Using another mouse model of ALS (SOD1^{G93A}) with labeled projection neurons and labeled microglia/macrophages, *in-vivo* imaging by two-photon laser scanning microscopy compared the role of microglia/macrophage-related NI in the CNS and peripheral nervous system and showed the disease-driving role of highly reactive microglia cells in preclinical disease stages (Dibaj *et al.*, 2011).

Epilepsy: As has been nicely reviewed recently (Vezzani *et al.*, 2011), glial cells are implicated in a number of molecular mechanisms of seizure precipitation and recurrence: (1) alterations in the phenotype and function of activated microglia and astrocytes; (2) modifications in potassium and water channels; (3) alterations of glutamine/glutamate cycle and glutamate receptor expression; (4) release of neuromodulatory molecules (gliotransmitters and neurotrophic factors); and (5) induction of neuroinflammatory molecules (cytokines, chemokines, prostaglandins, complement factors, and cell adhesion molecules). This review pointed out that brain injury and proconvulsant events can activate microglia and astrocytes to release a number of proinflammatory mediators initiating a cascade of neuroinflammatory processes in the brain (Vezzani *et al.*, 2011). So far, imaging of NI in the context of epilepsy has only been performed in single patients. [¹¹C]-(*R*)-PK11195 uptake was observed in regions of epileptic foci and focal cortical dysplasia as determined by high-resolution MRI, electroencephalography recording and intraictal and interictal [¹⁸F]FDG-PET (Butler *et al.*, 2011). These findings confirm results from invasive studies that revealed a specific and persistent increase in the numerical density of activated microglia within dysplastic regions of

patients with epilepsy, and support the view that the inflammatory response and proinflammatory molecules contribute to epileptogenicity of focal cortical dysplasia (Boer *et al.*, 2006).

Encephalitis: T2 and fluid attenuation inversion-recovery MRI sequences are the imaging methods of choice for detection with a high sensitivity of single changes in the temporal lobe caused by HSV-1 infection/reactivation. An enzymatic assay of thymidine kinase of HSV-1 (HSV-1-*tk*) using radiolabeled antiviral drugs was proposed 30 years ago for specific detection of active virus replication *in vivo* (Saito *et al.*, 1982). This enzymatic assay was later developed for imaging transduced gene expression *in vivo* and initiated together with other developments the exciting field of 'molecular genetic imaging' (Jacobs *et al.*, 1999; Tjuvajev *et al.*, 1995), which has been applied to clinical situations (Jacobs *et al.*, 2001b). This imaging technology can also assess *in-vivo* replication of recombinant HSV-1 vectors *in vivo* (Jacobs *et al.*, 2001a).

Apart from approaches to directly image herpes virus particles *in vivo*, microglial markers have been used to quantify herpes encephalitis-induced microglia activation *in vivo* (Cagnin *et al.*, 2001b; Doorduyn *et al.*, 2010). Similarly to studies in stroke (Figure 3), it was shown in patients with HSV-1 encephalitis ($n=2$) that [¹¹C]-(*R*)-PK11195-PET uptake increases significantly within the affected limbic system, and additionally in areas connected to the limbic system by neural pathways such as the lingual gyrus in the occipital lobe and the inferior parietal lobe, where uptake persists for many months (>12) after antiviral treatment (Cagnin *et al.*, 2001b). Interestingly, cortical areas showing an early high [¹¹C]-(*R*)-PK11195 binding subsequently underwent atrophy, underlining the neurotoxic effects of microglia (Figure 1). It should be pointed out that, in contrast to HSV-1 encephalitis, [¹¹C]-(*R*)-PK11195-PET studies in patients with human immunodeficiency virus (HIV) encephalitis were unable to detect significant activation of microglia *in vivo*, indicating that either [¹¹C]-(*R*)-PK11195 PET assessment is insensitive to the degree of macrophage activation in the HIV-associated minor neurocognitive impairment, or that macrophage activation is not the pathological substrate of this neurologic condition (Wiley *et al.*, 2006). The development of improved TSPO tracers may give an answer to this question (Doorduyn *et al.*, 2009b; Venneti *et al.*, 2008a,b). Finally, in an experimental macaque model system, activated macrophages in lentiviral encephalitis showed an increase in [³H]-(*R*)-PK11195 binding in a phosphoinositide 3 kinase-dependent manner (Venneti *et al.*, 2007).

Gliomas: Primary neoplasms are the second most common cause of death from an intracranial disease. Imaging based on PET and MRI has a crucial role for diagnosis, therapy guidance and in the recurrent situation (Dhermain *et al.*, 2010). Whereas PET

markers for increased amino-acid and nucleoside metabolism are nowadays used on a regular basis by many centers, TSPO could also be an exciting target to study the interrelation between glioma and microglial cells *in vivo* (Buck *et al*, 2011; Takaya *et al*, 2007). In patient samples, TSPO suppression in glioma-infiltrating microglia suggested that TSPO might have a relevant role in modulating the antitumor inflammatory response in astrocytic tumors (Takaya *et al*, 2007). The expression of TSPO has been shown in experimental glioma models and a direct visualization of the location and extent of the tumor was observed by microPET imaging with TSPO radiotracers by several groups (Buck *et al*, 2011; Tang *et al*, 2012; Winkeler *et al*, 2012).

Conclusion

Neuroinflammation is a complex orchestrated response to various stimuli aiming toward tissue preservation and restoration, which, under pathological conditions, paradoxically increases tissue damage and disease activity. In most neurologic diseases, the neuroinflammatory response determines tissue outcome. Therefore, a precise and reliable detection of NI is of great fundamental and clinical interest. Molecular imaging aims at deciphering the complex interplay of various cellular and molecular actors of NI *in vivo*. Presently, its main applications are the direct visualization of recruitment of specific cells from the periphery into the brain by two-photon microscopy (e.g., T cells) and MRI (macrophages) or the activation of microglia by PET and SPECT imaging. However, the long-term goal of this research aims to decipher imaging markers for NI which will guide the therapeutic interventions to alter the neurotoxic inflammatory cascade, prevent tissue damage, and enhance tissue repair. One key to success is the understanding and noninvasive revealing of the various microglial phenotypes during the course of diseases, to distinguish 'neurotoxic' from 'neuroprotective' microglia and to document the action of treatments inhibiting the former and stimulating the latter for an improved tissue outcome.

Acknowledgements

The review was initiated by an extensive process of scientific interactions with many colleges within the research carried out during the EU FW6 network of excellence program DIMI (<http://www.dimi.eu>) and within the design of the EU FW7 large scale integrating project INMiND (<http://www.uni-muenster.de/InMind>). The authors thank all colleagues within these research programs for sharing their knowledge and ideas. The authors also thank Prof. Ulrich Dirnagl (Berlin), Dr Hervé Boutin (Manchester), Prof. Adriaan Lammertsma (Amsterdam), and Prof. Gitte Knudsen (Copenhagen) to present parts of their research topics

within the field of neuroinflammation during a dedicated Session organized by the European Society for Molecular Imaging (ESMI) at the Brain2011 conference in Barcelona. Moreover, the authors thank Nina Gerigk (EIMI, Münster) for the design of Figure 1 and Dr Yannic Waerzeggers (EIMI, Münster) for proof reading of the manuscript.

Disclosure/conflict of interest

The authors declare no conflict of interest.

References

- Abourbeh G, Thézé B, Maroy R, Dubois A, Dollé F, Tavitian B, Boisgard R (2012) Imaging microglial/macrophage activation in spinal cords of experimental autoimmune encephalomyelitis (EAE) rats by PET using the mitochondrial 18-kDa translocator protein (TSPO) radioligand, [18F]-DPA-714. *J Neurosci* (in press)
- Ajami B, Bennett JL, Krieger C, McNagny KM, Rossi FM (2011) Infiltrating monocytes trigger EAE progression, but do not contribute to the resident microglia pool. *Nat Neurosci* 14:1142–9
- Alexopoulos GS, Morimoto SS (2011) The inflammation hypothesis in geriatric depression. *Int J Geriatr Psychiatry* advance online publication 2 March 2011; doi:10.1002/gps.2672 (e-pub ahead of print)
- Allan SM, Tyrrell PJ, Rothwell NJ (2005) Interleukin-1 and neuronal injury. *Nat Rev Immunol* 5:629–40
- Amor S, Puentes F, Baker D, van der Valk P (2010) Inflammation in neurodegenerative diseases. *Immunology* 129:154–69
- Arlicot N, Katsifis A, Garreau L, Mattner F, Vergote J, Duval S, Kousignian I, Bodard S, Guilloteau D, Chalon S (2008) Evaluation of CLINDE as potent translocator protein (18 kDa) SPECT radiotracer reflecting the degree of neuroinflammation in a rat model of microglial activation. *Eur J Nucl Med Mol Imaging* 35:2203–11
- Arslan F, Smeets MB, O'Neill LA, Keogh B, McGuirk P, Timmers L, Tersteeg C, Hofer IE, Doevendans PA, Pasterkamp G, de Kleijn DP (2010) Myocardial ischemia/reperfusion injury is mediated by leukocytic toll-like receptor-2 and reduced by systemic administration of a novel anti-toll-like receptor-2 antibody. *Circulation* 121:80–90
- Bacskaï BJ, Kajdasz ST, Christie RH, Carter C, Games D, Seubert P, Schenk D, Hyman BT (2001) Imaging of amyloid-beta deposits in brains of living mice permits direct observation of clearance of plaques with immunotherapy. *Nat Med* 7:369–72
- Bakshi R, Thompson AJ, Rocca MA, Pelletier D, Dousset V, Barkhof F, Inglese M, Guttman CR, Horsfield MA, Filippi M (2008) MRI in multiple sclerosis: current status and future prospects. *Lancet Neurol* 7:615–25
- Banati RB, Myers R, Kreutzberg GW (1997) PK ('peripheral benzodiazepine')-binding sites in the CNS indicate early and discrete brain lesions: microautoradiographic detection of [3H]PK11195 binding to activated microglia. *J Neurocytol* 26:77–82
- Banati RB, Newcombe J, Gunn RN, Cagnin A, Turkheimer F, Heppner F, Price G, Wegner F, Giovannoni G, Miller DH, Perkin GD, Smith T, Hewson AK, Bydder G, Kreutzberg GW, Jones T, Cuzner ML, Myers R (2000) The peripheral benzodiazepine binding site in the brain

- in multiple sclerosis: quantitative in vivo imaging of microglia as a measure of disease activity. *Brain* 123 (Part 11):2321–37
- Barkhof F, Calabresi PA, Miller DH, Reingold SC (2009) Imaging outcomes for neuroprotection and repair in multiple sclerosis trials. *Nat Rev Neurol* 5:256–66
- Bartels AL, Willemsen AT, Doorduyn J, de Vries EF, Dierckx RA, Leenders KL (2010) [11C]-PK11195 PET: quantification of neuroinflammation and a monitor of anti-inflammatory treatment in Parkinson's disease? *Parkinsonism Relat Disord* 16:57–9
- Bartholomaeus I, Kawakami N, Odoardi F, Schlager C, Miljkovic D, Ellwart JW, Klinkert WE, Flugel-Koch C, Issekutz TB, Wekerle H, Flugel A (2009) Effector T cell interactions with meningeal vascular structures in nascent autoimmune CNS lesions. *Nature* 462:94–8
- Berger C, Gremlich HU, Schmidt P, Cannet C, Kneuer R, Hiestand P, Rausch M, Rudin M (2007) In vivo monitoring the fate of Cy5.5-Tat labeled T lymphocytes by quantitative near-infrared fluorescence imaging during acute brain inflammation in a rat model of experimental autoimmune encephalomyelitis. *J Immunol Methods* 323:65–77
- Berti V, Pupi A, Mosconi L (2011) PET/CT in diagnosis of dementia. *Ann NY Acad Sci* 1228:81–92
- Boer K, Spliet WG, van Rijen PC, Redeker S, Troost D, Aronica E (2006) Evidence of activated microglia in focal cortical dysplasia. *J Neuroimmunol* 173:188–95
- Bogoslovsky T, Spatz M, Chaudhry A, Maric D, Luby M, Frank J, Warach S (2011) Circulating CD133+CD34+ progenitor cells inversely correlate with soluble ICAM-1 in early ischemic stroke patients. *J Transl Med* 9:145
- Brea D, Sobrino T, Rodriguez-Yanez M, Ramos-Cabrera P, Agulla J, Rodriguez-Gonzalez R, Campos F, Blanco M, Castillo J (2011) Toll-like receptors 7 and 8 expression is associated with poor outcome and greater inflammatory response in acute ischemic stroke. *Clin Immunol* 139:193–8
- Breckwoldt MO, Chen JW, Stangenberg L, Aikawa E, Rodriguez E, Qiu S, Moskowitz MA, Weissleder R (2008) Tracking the inflammatory response in stroke in vivo by sensing the enzyme myeloperoxidase. *Proc Natl Acad Sci USA* 105:18584–9
- Buck JR, McKinley ET, Hight MR, Fu A, Tang D, Smith RA, Tantawy MN, Peterson TE, Colvin D, Ansari MS, Baldwin RM, Zhao P, Guleryuz S, Manning HC (2011) Quantitative, preclinical PET of translocator protein expression in glioma using 18F-N-fluoroacetyl-N-(2,5-dimethoxybenzyl)-2-phenoxyaniline. *J Nucl Med* 52:107–14
- Butler T, Ichise M, Teich AF, Gerard E, Osborne J, French J, Devinsky O, Kuzniecky R, Gilliam F, Pervez F, Provenzano F, Goldsmith S, Vallabhajosula S, Stern E, Silbersweig D (2011) Imaging inflammation in a patient with epilepsy due to focal cortical dysplasia. *J Neuroimaging* advance online publication 11 January 2011; doi:10.1111/j.1552-6569.2010.00572.x (e-pub ahead of print)
- Cagnin A, Brooks DJ, Kennedy AM, Gunn RN, Myers R, Turkheimer FE, Jones T, Banati RB (2001a) In-vivo measurement of activated microglia in dementia. *Lancet* 358:461–7
- Cagnin A, Myers R, Gunn RN, Lawrence AD, Stevens T, Kreutzberg GW, Jones T, Banati RB (2001b) In vivo visualization of activated glia by [11C] (R)-PK11195-PET following herpes encephalitis reveals projected neuronal damage beyond the primary focal lesion. *Brain* 124:2014–27
- Cagnin A, Rossor M, Sampson EL, Mackinnon T, Banati RB (2004) In vivo detection of microglial activation in frontotemporal dementia. *Ann Neurol* 56:894–7
- Cardona AE, Piroo EP, Sasse ME, Kostenko V, Cardona SM, Dijkstra IM, Huang D, Kidd G, Dombrowski S, Dutta R, Lee JC, Cook DN, Jung S, Lira SA, Littman DR, Ransohoff RM (2006) Control of microglial neurotoxicity by the fractalkine receptor. *Nat Neurosci* 9:917–24
- Castelli DD, Terreno E, Cabella C, Chaabane L, Lanzardo S, Tei L, Visigalli M, Aime S (2009) Evidence for in vivo macrophage mediated tumor uptake of paramagnetic/fluorescent liposomes. *NMR Biomed* 22:1084–92
- Chauveau F, Boutin H, Van Camp N, Dolle F, Tavitian B (2008) Nuclear imaging of neuroinflammation: a comprehensive review of [11C]PK11195 challengers. *Eur J Nucl Med Mol Imaging* 35:2304–19
- Chauveau F, Boutin H, Van Camp N, Thominaux C, Hantraye P, Rivron L, Marguet F, Castel MN, Rooney T, Benavides J, Dolle F, Tavitian B (2011) In vivo imaging of neuroinflammation in the rodent brain with [11C]SSR180575, a novel indoleacetamide radioligand of the translocator protein (18 kDa). *Eur J Nucl Med Mol Imaging* 38:509–14
- Chauveau F, Van Camp N, Dolle F, Kuhnast B, Hinnen F, Damont A, Boutin H, James M, Kassiou M, Tavitian B (2009) Comparative evaluation of the translocator protein radioligands 11C-DPA-713, 18F-DPA-714, and 11C-PK11195 in a rat model of acute neuroinflammation. *J Nucl Med* 50:468–76
- Chavant F, Deguil J, Pain S, Ingrand I, Milin S, Fauconneau B, Peraud-Pochat MC, Lafay-Chebassier C (2010) Imipramine, in part through tumor necrosis factor alpha inhibition, prevents cognitive decline and beta-amyloid accumulation in a mouse model of Alzheimer's disease. *J Pharmacol Exp Ther* 332:505–14
- Chen GY, Nunez G (2010) Sterile inflammation: sensing and reacting to damage. *Nat Rev Immunol* 10:826–37
- Chen JW, Breckwoldt MO, Aikawa E, Chiang G, Weissleder R (2008) Myeloperoxidase-targeted imaging of active inflammatory lesions in murine experimental autoimmune encephalomyelitis. *Brain* 131:1123–33
- Chin CL, Pai M, Bousquet PF, Schwartz AJ, O'Connor EM, Nelson CM, Hradil VP, Cox BF, McRae BL, Fox GB (2009) Distinct spatiotemporal pattern of CNS lesions revealed by USPIO-enhanced MRI in MOG-induced EAE rats implicates the involvement of spino-olivocerebellar pathways. *J Neuroimmunol* 211:49–55
- Choi J, Ifuku M, Noda M, Guilarde TR (2011) Translocator protein (18 kDa)/peripheral benzodiazepine receptor specific ligands induce microglia functions consistent with an activated state. *Glia* 59:219–30
- Ciarmiello A (2011) Imaging of neuroinflammation. *Eur J Nucl Med Mol Imaging* 38:2198–201
- Cicchetti F, Brownell AL, Williams K, Chen YI, Livni E, Isacson O (2002) Neuroinflammation of the nigrostriatal pathway during progressive 6-OHDA dopamine degeneration in rats monitored by immunohistochemistry and PET imaging. *Eur J Neurosci* 15:991–8
- Cordeau Jr P, Lalancette-Hebert M, Weng YC, Kriz J (2008) Live imaging of neuroinflammation reveals sex and estrogen effects on astrocyte response to ischemic injury. *Stroke* 39:935–42
- Costa GL, Sandora MR, Nakajima A, Nguyen EV, Taylor-Edwards C, Slavov AJ, Contag CH, Fathman CG, Benson JM (2001) Adoptive immunotherapy of experimental autoimmune encephalomyelitis via T cell delivery of the IL-12 p40 subunit. *J Immunol* 167:2379–87

- Cui Y, Takashima T, Takashima-Hirano M, Wada Y, Shukuri M, Tamura Y, Doi H, Onoe H, Kataoka Y, Watanabe Y (2009) 11C-PK11195 PET for the in vivo evaluation of neuroinflammation in the rat brain after cortical spreading depression. *J Nucl Med* 50:1904–11
- Czeh M, Gressens P, Kaindl AM (2011) The yin and yang of microglia. *Dev Neurosci* 33:199–209
- Davalos D, Grutzendler J, Yang G, Kim JV, Zuo Y, Jung S, Littman DR, Dustin ML, Gan WB (2005) ATP mediates rapid microglial response to local brain injury in vivo. *Nat Neurosci* 8:752–8
- de Vries EF, Doorduyn J, Dierckx RA, van Waarde A (2008) Evaluation of [(11)C]rofecoxib as PET tracer for cyclooxygenase 2 overexpression in rat models of inflammation. *Nucl Med Biol* 35:35–42
- Debruyne JC, Versijpt J, Van Laere KJ, De Vos F, Keppens J, Strijckmans K, Achten E, Slegers G, Dierckx RA, Korf J, De Reuck JL (2003) PET visualization of microglia in multiple sclerosis patients using [(11)C]PK11195. *Eur J Neurol* 10:257–64
- Deckers R, Quesson B, Arsaut J, Eimer S, Couillaud F, Moonen CT (2009) Image-guided, noninvasive, spatio-temporal control of gene expression. *Proc Natl Acad Sci USA* 106:1175–80
- Desestret V, Brisset JC, Moucharrafi S, Devillard E, Nataf S, Honnorat J, Nighoghossian N, Berthezene Y, Wiart M (2009) Early-stage investigations of ultrasmall superparamagnetic iron oxide-induced signal change after permanent middle cerebral artery occlusion in mice. *Stroke* 40:1834–41
- Dhermain FG, Hau P, Lanfermann H, Jacobs AH, van den Bent MJ (2010) Advanced MRI and PET imaging for assessment of treatment response in patients with gliomas. *Lancet Neurol* 9:906–20
- Dibaj P, Steffens H, Zschuntzsch J, Nadrigny F, Schomburg ED, Kirchoff F, Neusch C (2011) In vivo imaging reveals distinct inflammatory activity of CNS microglia versus PNS macrophages in a mouse model for ALS. *PLoS One* 6:e17910
- Dirnagl U, Iadecola C, Moskowitz MA (1999) Pathobiology of ischaemic stroke: an integrated view. *Trends Neurosci* 22:391–7
- Dodel R, Spottke A, Gerhard A, Reuss A, Reinecker S, Schimke N, Trenkwalder C, Sixel-Doring F, Herting B, Kamm C, Gasser T, Sawires M, Geser F, Kollensperger M, Seppi K, Kloss M, Krause M, Daniels C, Deuschl G, Bottger S, Naumann M, Lipp A, Gruber D, Kupsch A, Du Y, Turkheimer F, Brooks DJ, Klockgether T, Poewe W, Wenning G, Schade-Brittinger C, Oertel WH, Eggert K (2010) Minocycline 1-year therapy in multiple-system-atrophy: effect on clinical symptoms and [(11)C] (R)-PK11195 PET (MEMSA-trial). *Mov Disord* 25:97–107
- Dolle F, Luus C, Reynolds A, Kassiou M (2009) Radiolabelled molecules for imaging the translocator protein (18 kDa) using positron emission tomography. *Curr Med Chem* 16:2899–923
- Doorduyn J, de Vries EF, Willemsen AT, de Groot JC, Dierckx RA, Klein HC (2009a) Neuroinflammation in schizophrenia-related psychosis: a PET study. *J Nucl Med* 50:1801–7
- Doorduyn J, Klein HC, de Jong JR, Dierckx RA, de Vries EF (2010) Evaluation of [(11)C]-DAA1106 for imaging and quantification of neuroinflammation in a rat model of herpes encephalitis. *Nucl Med Biol* 37:9–15
- Doorduyn J, Klein HC, Dierckx RA, James M, Kassiou M, de Vries EF (2009b) [(11)C]-DPA-713 and [(18)F]-DPA-714 as new PET tracers for TSPO: a comparison with [(11)C]-(R)-PK11195 in a rat model of herpes encephalitis. *Mol Imaging Biol* 11:386–98
- Dobrovinn M, Che JT, Serganova I, Moroz E, Solit DB, Ageyeva L, Kochetkova T, Pillarsetti N, Finn R, Rosen N, Blasberg RG (2011) Monitoring the induction of heat shock factor 1/heat shock protein 70 expression following 17-allylamino-demethoxygeldanamycin treatment by positron emission tomography and optical reporter gene imaging. *Mol Imaging* 1–10; advance online publication, 4 August 2011
- Drake C, Boutin H, Jones MS, Denes A, McColl BW, Selvarajah JR, Hulme S, Georgiou RF, Hinz R, Gerhard A, Vail A, Prenant C, Julyan P, Maroy R, Brown G, Smigova A, Herholz K, Kassiou M, Crossman D, Francis S, Proctor SD, Russell JC, Hopkins SJ, Tyrrell PJ, Rothwell NJ, Allan SM (2011) Brain inflammation is induced by comorbidities and risk factors for stroke. *Brain Behav Immun* 25:1113–22
- Edison P, Archer HA, Gerhard A, Hinz R, Pavese N, Turkheimer FE, Hammers A, Tai YF, Fox N, Kennedy A, Rossor M, Brooks DJ (2008) Microglia, amyloid, and cognition in Alzheimer's disease: an [(11)C]-(R)-PK11195-PET and [(11)C]PIB-PET study. *Neurobiol Dis* 32:412–9
- Evens N, Muccioli GG, Houbrechts N, Lambert DM, Verbruggen AM, Van Laere K, Bormans GM (2009) Synthesis and biological evaluation of carbon-11- and fluorine-18-labeled 2-oxoquinoline derivatives for type 2 cannabinoid receptor positron emission tomography imaging. *Nucl Med Biol* 36:455–65
- Fagan SC, Waller JL, Nichols FT, Edwards DJ, Pettigrew LC, Clark WM, Hall CE, Switzer JA, Ergul A, Hess DC (2010) Minocycline to improve neurologic outcome in stroke (MINOS): a dose-finding study. *Stroke* 41:2283–7
- Ferrari CC, Tarelli R (2011) Parkinson's disease and systemic inflammation. *Parkinsons Dis* 2011:436813
- Fowler JS, MacGregor RR, Wolf AP, Arnett CD, Dewey SL, Schlyer D, Christman D, Logan J, Smith M, Sachs H (1987) Mapping human brain monoamine oxidase A and B with 11C-labeled suicide inactivators and PET. *Science* 235:481–5
- Frank-Cannon TC, Alto LT, McAlpine FE, Tansey MG (2009) Does neuroinflammation fan the flame in neurodegenerative diseases? *Mol Neurodegener* 4:47
- Gelderblom M, Leyboldt F, Steinbach K, Behrens D, Choe CU, Siler DA, Arumugam TV, Orthey E, Gerloff C, Tolosa E, Magnus T (2009) Temporal and spatial dynamics of cerebral immune cell accumulation in stroke. *Stroke* 40:1849–57
- Gemma C, Bachstetter AD, Bickford PC (2010) Neuron-microglia dialogue and hippocampal neurogenesis in the aged brain. *Aging Dis* 1:232–44
- Gerhard A, Pavese N, Hotton G, Turkheimer F, Es M, Hammers A, Eggert K, Oertel W, Banati RB, Brooks DJ (2006) In vivo imaging of microglial activation with [(11)C]-(R)-PK11195 PET in idiopathic Parkinson's disease. *Neurobiol Dis* 21:404–12
- Gerhard A, Schwarz J, Myers R, Wise R, Banati RB (2005) Evolution of microglial activation in patients after ischemic stroke: a [(11)C]-(R)-PK11195 PET study. *Neuroimage* 24:591–5
- Ghosh P, Li KC, Lee DY (2011) Radiosynthesis of [(18)F]fluoromethyldeoxyspergualin for molecular imaging of heat shock proteins. *Appl Radiat Isot* 69:609–13
- Ginhoux F, Gréter M, Leboeuf M, Nandi S, See P, Gokhan S, Mehler MF, Conway SJ, Ng LG, Stanley ER, Samokhvalov IM, Merad M (2010) Fate mapping analysis reveals

- that adult microglia derive from primitive macrophages. *Science* 330:841–5
- Glass CK, Saijo K, Winner B, Marchetto MC, Gage FH (2010) Mechanisms underlying inflammation in neurodegeneration. *Cell* 140:918–34
- Graeber MB, Li W, Rodriguez ML (2011) Role of microglia in CNS inflammation. *FEBS Lett* 585:3798–805
- Gulyas B, Pavlova E, Kasa P, Gulya K, Bakota L, Varszegi S, Keller E, Horvath MC, Nag S, Hermecz I, Magyar K, Halldin C (2011) Activated MAO-B in the brain of Alzheimer patients, demonstrated by [11C]-L-deprenyl using whole hemisphere autoradiography. *Neurochem Int* 58:60–8
- Ha S, Carson A, Agarwal A, Kotov NA, Kim K (2011) Detection and monitoring of the multiple inflammatory responses by photoacoustic molecular imaging using selectively targeted gold nanorods. *Biomed Opt Express* 2:645–57
- Hayton T, Furby J, Smith KJ, Altmann DR, Brenner R, Chataway J, Hunter K, Tozer DJ, Miller DH, Kapoor R (2012) Clinical and imaging correlates of the multiple sclerosis impact scale in secondary progressive multiple sclerosis. *J Neurol* 254:237–45
- Heneka MT, Nadrigny F, Regen T, Martinez-Hernandez A, Dumitrescu-Ozimek L, Terwel D, Jandanhazi-Kurutz D, Walter J, Kirchhoff F, Hanisch UK, Kummer MP (2010a) Locus ceruleus controls Alzheimer's disease pathology by modulating microglial functions through norepinephrine. *Proc Natl Acad Sci USA* 107:6058–63
- Heneka MT, O'Banion MK, Terwel D, Kummer MP (2010b) Neuroinflammatory processes in Alzheimer's disease. *J Neural Transm* 117:919–47
- Horti AG, Gao Y, Ravert HT, Finley P, Valentine H, Wong DF, Endres CJ, Savonenko AV, Dannals RF (2010) Synthesis and biodistribution of [11C]A-836339, a new potential radioligand for PET imaging of cannabinoid type 2 receptors (CB2). *Bioorg Med Chem* 18:5202–7
- Hoyte LC, Brooks KJ, Nagel S, Akhtar A, Chen R, Mardiguian S, McAteer MA, Anthony DC, Choudhury RP, Buchan AM, Sibson NR (2010) Molecular magnetic resonance imaging of acute vascular cell adhesion molecule-1 expression in a mouse model of cerebral ischemia. *J Cereb Blood Flow Metab* 30:1178–87
- Imaizumi M, Kim HJ, Zoghbi SS, Briard E, Hong J, Musachio JL, Ruetzler C, Chuang DM, Pike VW, Innis RB, Fujita M (2007) PET imaging with [11C]PBR28 can localize and quantify upregulated peripheral benzodiazepine receptors associated with cerebral ischemia in rat. *Neurosci Lett* 411:200–5
- Iwama S, Sugimura Y, Suzuki H, Murase T, Ozaki N, Nagasaki H, Arima H, Murata Y, Sawada M, Oiso Y (2011) Time-dependent changes in proinflammatory and neurotrophic responses of microglia and astrocytes in a rat model of osmotic demyelination syndrome. *Glia* 59:452–62
- Jacobs A, Dubrovin M, Hewett J, Sena-Esteves M, Tan CW, Slack M, Sadelain M, Breakefield XO, Tjuvajev JG (1999) Functional coexpression of HSV-1 thymidine kinase and green fluorescent protein: implications for noninvasive imaging of transgene expression. *Neoplasia* 1:154–61
- Jacobs A, Tjuvajev JG, Dubrovin M, Akhurst T, Balatoni J, Beattie B, Joshi R, Finn R, Larson SM, Herrlinger U, Pechan PA, Chiocca EA, Breakefield XO, Blasberg RG (2001a) Positron emission tomography-based imaging of transgene expression mediated by replication-conditional, oncolytic herpes simplex virus type 1 mutant vectors in vivo. *Cancer Res* 61:2983–95
- Jacobs A, Voges J, Reszka R, Lercher M, Gossmann A, Kracht L, Kaestle C, Wagner R, Wienhard K, Heiss WD (2001b) Positron-emission tomography of vector-mediated gene expression in gene therapy for gliomas. *Lancet* 358:727–9
- James ML, Fulton RR, Vercoullie J, Henderson DJ, Garreau L, Chalon S, Dolle F, Costa B, Guilloteau D, Kassiou M (2008) DPA-714, a new translocator protein-specific ligand: synthesis, radiofluorination, and pharmacologic characterization. *J Nucl Med* 49:814–22
- Kadir A, Marutle A, Gonzalez D, Scholl M, Almkvist O, Mousavi M, Mustafiz T, Darreh-Shori T, Nennesmo I, Nordberg A (2011) Positron emission tomography imaging and clinical progression in relation to molecular pathology in the first Pittsburgh Compound B positron emission tomography patient with Alzheimer's disease. *Brain* 134:301–17
- Kawakami N, Flugel A (2010) Knocking at the brain's door: intravital two-photon imaging of autoreactive T cell interactions with CNS structures. *Semin Immunopathol* 32:275–87
- Keller AF, Gravel M, Kriz J (2011) Treatment with minocycline after disease onset alters astrocyte reactivity and increases microgliosis in SOD1 mutant mice. *Exp Neurol* 228:69–79
- Kiessling F, Huppert J, Palmowski M (2009) Functional and molecular ultrasound imaging: concepts and contrast agents. *Curr Med Chem* 16:627–42
- Kiferle L, Politis M, Muraro PA, Piccini P (2011) Positron emission tomography imaging in multiple sclerosis-current status and future applications. *Eur J Neurol* 18: 226–31
- Kim H, Moody MR, Laing ST, Kee PH, Huang SL, Klegerman ME, McPherson DD (2010a) In vivo volumetric intravascular ultrasound visualization of early/inflammatory arterial atheroma using targeted echogenic immunoliposomes. *Invest Radiol* 45:685–91
- Kim JV, Jiang N, Tadokoro CE, Liu L, Ransohoff RM, Lafaille JJ, Dustin ML (2010b) Two-photon laser scanning microscopy imaging of intact spinal cord and cerebral cortex reveals requirement for CXCR6 and neuroinflammation in immune cell infiltration of cortical injury sites. *J Immunol Methods* 352:89–100
- Klunk WE, Engler H, Nordberg A, Wang Y, Blomqvist G, Holt DP, Bergstrom M, Savitcheva I, Huang GF, Estrada S, Ausen B, Debnath ML, Barletta J, Price JC, Sandell J, Lopresti BJ, Wall A, Koivisto P, Antoni G, Mathis CA, Langstrom B (2004) Imaging brain amyloid in Alzheimer's disease with Pittsburgh Compound-B. *Ann Neurol* 55:306–19
- Kropholler MA, Boellaard R, van Berckel BN, Schuite-maker A, Kloet RW, Lubberink MJ, Jonker C, Scheltens P, Lammertsma AA (2007) Evaluation of reference regions for (R)-[(11)C]PK11195 studies in Alzheimer's disease and mild cognitive impairment. *J Cereb Blood Flow Metab* 27:1965–74
- Ladewig G, Jestaedt L, Misselwitz B, Solymosi L, Toyka K, Bendszus M, Stoll G (2009) Spatial diversity of blood-brain barrier alteration and macrophage invasion in experimental autoimmune encephalomyelitis: a comparative MRI study. *Exp Neurol* 220:207–11
- Leung K (2011) Anti-vascular cell adhesion molecule antibody M/K-2.7-conjugated microparticles of iron oxide. *Molecular Imaging and Contrast Agent Database (MICAD) [Internet]*. Bethesda (MD): National Center for Biotechnology Information (US), pp 2004–11

- Liesz A, Suri-Payer E, Veltkamp C, Doerr H, Sommer C, Rivest S, Giese T, Veltkamp R (2009) Regulatory T cells are key cerebroprotective immunomodulators in acute experimental stroke. *Nat Med* 15:192–9
- Liu J, Zhang P, Liu P, Zhao Y, Gao S, Tan K, Liu Z (2011) Endothelial adhesion of targeted microbubbles in both small and great vessels using ultrasound radiation force. *Mol Imaging* E-pub ahead of print
- Lo EH (2009) T time in the brain. *Nat Med* 15:844–6
- Luo J, Ho P, Steinman L, Wyss-Coray T (2008) Bioluminescence in vivo imaging of autoimmune encephalomyelitis predicts disease. *J Neuroinflammation* 5:6
- Luo J, Ho PP, Buckwalter MS, Hsu T, Lee LY, Zhang H, Kim DK, Kim SJ, Gambhir SS, Steinman L, Wyss-Coray T (2007) Glia-dependent TGF-beta signaling, acting independently of the TH17 pathway, is critical for initiation of murine autoimmune encephalomyelitis. *J Clin Invest* 117:3306–15
- Luster AD, Alon R, von Andrian UH (2005) Immune cell migration in inflammation: present and future therapeutic targets. *Nat Immunol* 6:1182–90
- Macrez R, Ali C, Toutirais O, Le Mauff B, Defer G, Dirnagl U, Vivien D (2011) Stroke and the immune system: from pathophysiology to new therapeutic strategies. *Lancet Neurol* 10:471–80
- Madinier A, Bertrand N, Mossiat C, Prigent-Tessier A, Beley A, Marie C, Garnier P (2009) Microglial involvement in neuroplastic changes following focal brain ischemia in rats. *PLoS One* 4:e8101
- Man S, Ubogu EE, Ransohoff RM (2007) Inflammatory cell migration into the central nervous system: a few new twists on an old tale. *Brain Pathol* 17:243–50
- Martin A, Boisgard R, Kassiou M, Dolle F, Tavitian B (2011) Reduced PBR/TSPO expression after minocycline treatment in a rat model of focal cerebral ischemia: a PET study using [(18)F]DPA-714. *Mol Imaging Biol* 13:10–5
- Martin A, Boisgard R, Theze B, Van Camp N, Kuhnast B, Damont A, Kassiou M, Dolle F, Tavitian B (2010) Evaluation of the PBR/TSPO radioligand [(18)F]DPA-714 in a rat model of focal cerebral ischemia. *J Cereb Blood Flow Metab* 30:230–41
- Mattner F, Bandin DL, Staykova M, Berghofer P, Gregoire MC, Ballantyne P, Quinlivan M, Fordham S, Pham T, Willenborg DO, Katsifis A (2011) Evaluation of [(1)(2)(3)I]-CLINDE as a potent SPECT radiotracer to assess the degree of astroglia activation in cuprizone-induced neuroinflammation. *Eur J Nucl Med Mol Imaging* 38:1516–28
- McAteer MA, Sibson NR, von Zur Muhlen C, Schneider JE, Lowe AS, Warrick N, Channon KM, Anthony DC, Choudhury RP (2007) In vivo magnetic resonance imaging of acute brain inflammation using microparticles of iron oxide. *Nat Med* 13:1253–8
- Medzhitov R (2008) Origin and physiological roles of inflammation. *Nature* 454:428–35
- Min KJ, Yang MS, Kim SU, Jou I, Joe EH (2006) Astrocytes induce hemeoxygenase-1 expression in microglia: a feasible mechanism for preventing excessive brain inflammation. *J Neurosci* 26:1880–7
- Monif M, Reid CA, Powell KL, Smart ML, Williams DA (2009) The P2X7 receptor drives microglial activation and proliferation: a trophic role for P2X7R pore. *J Neurosci* 29:3781–91
- Moskowitz MA, Lo EH, Iadecola C (2010) The science of stroke: mechanisms in search of treatments. *Neuron* 67:181–98
- Neumann H, Kotter MR, Franklin RJ (2009) Debris clearance by microglia: an essential link between degeneration and regeneration. *Brain* 132:288–95
- Niethammer P, Grabher C, Look AT, Mitchison TJ (2009) A tissue-scale gradient of hydrogen peroxide mediates rapid wound detection in zebrafish. *Nature* 459:996–9
- Nighoghossian N, Wiart M, Cakmak S, Berthezene Y, Derex L, Cho TH, Nemoz C, Chapuis F, Tisserand GL, Pialat JB, Trouillas P, Froment JC, Hermier M (2007) Inflammatory response after ischemic stroke: a USPIO-enhanced MRI study in patients. *Stroke* 38:303–7
- Nimmerjahn A, Kirchhoff F, Helmchen F (2005) Resting microglial cells are highly dynamic surveillants of brain parenchyma in vivo. *Science* 308:1314–8
- NIND (1995) Tissue plasminogen activator for acute ischemic stroke. The National Institute of Neurological Disorders and Stroke rt-PA Stroke Study Group. *N Engl J Med* 333:1581–7
- Okello A, Edison P, Archer HA, Turkheimer FE, Kennedy J, Bullock R, Walker Z, Kennedy A, Fox N, Rossor M, Brooks DJ (2009) Microglial activation and amyloid deposition in mild cognitive impairment: a PET study. *Neurology* 72:56–62
- Olah M, Biber K, Vinet J, Boddeke HW (2011) Microglia phenotype diversity. *CNS Neurol Disord Drug Targets* 10:108–18
- Owen DR, Gunn RN, Rabiner EA, Bennacef I, Fujita M, Kreisl WC, Innis RB, Pike VW, Reynolds R, Matthews PM, Parker CA (2011) Mixed-affinity binding in humans with 18-kDa translocator protein ligands. *J Nucl Med* 52:24–32
- Pappata S, Levasseur M, Gunn RN, Myers R, Crouzel C, Syrota A, Jones T, Kreutzberg GW, Banati RB (2000) Thalamic microglial activation in ischemic stroke detected in vivo by PET and [(11)C]PK1195. *Neurology* 55:1052–4
- Parkhurst CN, Gan WB (2010) Microglia dynamics and function in the CNS. *Curr Opin Neurobiol* 20:595–600
- Perry VH, Nicoll JA, Holmes C (2010) Microglia in neurodegenerative disease. *Nat Rev Neurol* 6:193–201
- Pinas V, Windhorst A, Lammertsma A, van Eck-Smit B (2009) Radiolabelled matrix metalloproteinase (Mmp) inhibitors for in vivo imaging of unstable plaques using PET and SPECT. *J Label Comp Radiopharm* 52:S42
- Price CJ, Wang D, Menon DK, Guadagno JV, Cleij M, Fryer T, Aigbirhio F, Baron JC, Warburton EA (2006) Intrinsic activated microglia map to the peri-infarct zone in the subacute phase of ischemic stroke. *Stroke* 37:1749–53
- Radlinska BA, Ghinani SA, Lyon P, Jolly D, Soucy JP, Minuk J, Schirmacher R, Thiel A (2009) Multimodal microglia imaging of fiber tracts in acute subcortical stroke. *Ann Neurol* 66:825–32
- Radu CG, Shu CJ, Shelly SM, Phelps ME, Witte ON (2007) Positron emission tomography with computed tomography imaging of neuroinflammation in experimental autoimmune encephalomyelitis. *Proc Natl Acad Sci USA* 104:1937–42
- Raivich G (2005) Like cops on the beat: the active role of resting microglia. *Trends Neurosci* 28:571–3
- Rivest S (2009) Regulation of innate immune responses in the brain. *Nat Rev Immunol* 9:429–39
- Rojas S, Martin A, Arranz MJ, Pareto D, Purroy J, Verdaguer E, Llop J, Gomez V, Gispert JD, Millan O, Chamorro A, Planas AM (2007) Imaging brain inflammation with [(11)C]PK11195 by PET and induction of the peripheral-type benzodiazepine receptor after transient focal ischemia in rats. *J Cereb Blood Flow Metab* 27:1975–86
- Rossin R, Muro S, Welch MJ, Muzykantov VR, Schuster DP (2008) In vivo imaging of 64Cu-labeled polymer nanoparticles targeted to the lung endothelium. *J Nucl Med* 49:103–11

- Rupprecht R, Papadopoulos V, Rammes G, Baghai TC, Fan J, Akula N, Groyer G, Adams D, Schumacher M (2010) Translocator protein (18 kDa) (TSPO) as a therapeutic target for neurological and psychiatric disorders. *Nat Rev Drug Discov* 9:971–88
- Saito Y, Price RW, Rottenberg DA, Fox JJ, Su TL, Watanabe KA, Philips FS (1982) Quantitative autoradiographic mapping of herpes simplex virus encephalitis with a radiolabeled antiviral drug. *Science* 217:1151–3
- Schroeter M, Dennin MA, Walberer M, Backes H, Neumaier B, Fink GR, Graf R (2009) Neuroinflammation extends brain tissue at risk to vital peri-infarct tissue: a double tracer [11C]PK11195- and [18F]FDG-PET study. *J Cereb Blood Flow Metab* 29:1216–25
- Schuitmaker A, van Berckel BN, Kropholler MA, Kloet RW, Jonker C, Scheltens P, Lammertsma AA, Boellaard R (2007) Evaluation of methods for generating parametric (R-[11C]PK11195) binding images. *J Cereb Blood Flow Metab* 27:1603–15
- Shao X, Zhang H, Rajian JR, Chamberland DL, Sherman PS, Quesada CA, Koch AE, Kotov NA, Wang X (2011) (125)I-labeled gold nanorods for targeted imaging of inflammation. *ACS Nano* 5:8967–73
- Shichita T, Sugiyama Y, Ooboshi H, Sugimori H, Nakagawa R, Takada I, Iwaki T, Okada Y, Iida M, Cua DJ, Iwakura Y, Yoshimura A (2009) Pivotal role of cerebral interleukin-17-producing gammadeltaT cells in the delayed phase of ischemic brain injury. *Nat Med* 15:946–50
- Shih AY, Fernandes HB, Choi FY, Kozoriz MG, Liu Y, Li P, Cowan CM, Klegeris A (2006) Policing the police: astrocytes modulate microglial activation. *J Neurosci* 26:3887–8
- Shukuri M, Takashima-Hirano M, Tokuda K, Takashima T, Matsumura K, Inoue O, Doi H, Suzuki M, Watanabe Y, Onoe H (2011) In vivo expression of cyclooxygenase-1 in activated microglia and macrophages during neuroinflammation visualized by PET with 11C-ketoprofen methyl ester. *J Nucl Med* 52:1094–101
- Siffirin V, Radbruch H, Glumm R, Niesner R, Paterka M, Herz J, Leuenberger T, Lehmann SM, Luenstedt S, Rinnenthal JL, Laube G, Luche H, Lehnardt S, Fehling HJ, Griesbeck O, Zipp F (2010) In vivo imaging of partially reversible th17 cell-induced neuronal dysfunction in the course of encephalomyelitis. *Immunity* 33:424–36
- Sobesky J, Frackowiak M, Zaro Weber O, Hahn M, Moller-Hartmann W, Rudolf J, Neveling M, Grond M, Schmulding S, Jacobs A, Heiss WD (2007) The Cologne stroke experience: safety and outcome in 450 patients treated with intravenous thrombolysis. *Cerebrovasc Dis* 24:56–65
- Soenen SJ, Himmelreich U, Nuytten N, Pisanic II TR, Ferrari A, De Cuyper M (2010) Intracellular nanoparticle coating stability determines nanoparticle diagnostics efficacy and cell functionality. *Small* 6:2136–45
- Soriano SF, Hons M, Schumann K, Kumar V, Dennier TJ, Lyck R, Sixt M, Stein JV (2011) In vivo analysis of uropod function during physiological T cell trafficking. *J Immunol* 187:2356–64
- Sorokin L (2010) The impact of the extracellular matrix on inflammation. *Nat Rev Immunol* 10:712–23
- Steiner O, Coisne C, Cecchelli R, Boscacci R, Deutsch U, Engelhardt B, Lyck R (2010) Differential roles for endothelial ICAM-1, ICAM-2, and VCAM-1 in shear-resistant T cell arrest, polarization, and directed crawling on blood-brain barrier endothelium. *J Immunol* 185:4846–55
- Stoll G, Bendszus M (2010) New approaches to neuroimaging of central nervous system inflammation. *Curr Opin Neurol* 23:282–6
- Stuber M, Gilson WD, Schar M, Kedziorek DA, Hofmann LV, Shah S, Vonken EJ, Bulte JW, Kraitchman DL (2007) Positive contrast visualization of iron oxide-labeled stem cells using inversion-recovery with ON-resonant water suppression (IRON). *Magn Reson Med* 58:1072–7
- Sun D, Nakao S, Xie F, Zandi S, Schering A, Hafezi-Moghadam A (2010) Superior sensitivity of novel molecular imaging probe: simultaneously targeting two types of endothelial injury markers. *FASEB J* 24:1532–40
- Svensson L, McDowall A, Giles KM, Stanley P, Feske S, Hogg N (2010) Calpain 2 controls turnover of LFA-1 adhesions on migrating T lymphocytes. *PLoS One* 5:e15090
- Takaya S, Hashikawa K, Turkheimer FE, Mottram N, Deprez M, Ishizu K, Kawashima H, Akiyama H, Fukuyama H, Banati RB, Roncaroli F (2007) The lack of expression of the peripheral benzodiazepine receptor characterises microglial response in anaplastic astrocytomas. *J Neurooncol* 85:95–103
- Tang D, Hight MR, McKinley ET, Fu A, Buck JR, Smith RA, Tantawy MN, Peterson TE, Colvin DC, Ansari MS, Nickels M, Manning HC (2012) Quantitative preclinical imaging of TSPO expression in glioma using N,N-diethyl-2-(2-(4-(2-18F-fluoroethoxy)phenyl)-5,7-dimethylpyrazolo[1,5-a]pyrimidin-3-yl)acetamide. *J Nucl Med* 53:287–94
- te Boekhorst BC, Bovens SM, van de Kolk CW, Cramer MJ, Doevendans PA, ten Hove M, van der Weerd L, Poelmann R, Strijkers GJ, Pasterkamp G, van Echteld CJ (2010) The time window of MRI of murine atherosclerotic plaques after administration of CB2 receptor targeted micelles: inter-scan variability and relation between plaque signal intensity increase and gadolinium content of inversion recovery prepared versus non-prepared fast spin echo. *NMR Biomed* 23:939–51
- Thiel A, Radlinska BA, Paquette C, Sidel M, Soucy JP, Schirmacher R, Minuk J (2010) The temporal dynamics of poststroke neuroinflammation: a longitudinal diffusion tensor imaging-guided PET study with 11C-PK11195 in acute subcortical stroke. *J Nucl Med* 51:1404–12
- Tian L, Rauvala H, Gahmberg CG (2009) Neuronal regulation of immune responses in the central nervous system. *Trends Immunol* 30:91–9
- Tjuvajev JG, Stockhammer G, Desai R, Uehara H, Watanabe K, Gansbacher B, Blasberg RG (1995) Imaging the expression of transfected genes in vivo. *Cancer Res* 55:6126–32
- Tomasi G, Edison P, Bertoldo A, Roncaroli F, Singh P, Gerhard A, Cobelli C, Brooks DJ, Turkheimer FE (2008) Novel reference region model reveals increased microglial and reduced vascular binding of 11C-(R)-PK11195 in patients with Alzheimer's disease. *J Nucl Med* 49:1249–56
- Tourdias T, Hiba B, Raffard G, Biran M, Nishiguchi T, Aussudre J, Franconi JM, Brochet B, Petry KG, Dousset V (2011) Adapted focal experimental autoimmune encephalomyelitis to allow MRI exploration of multiple sclerosis features. *Exp Neurol* 230:248–57
- Triantafilou K, Triantafilou M (2012) Visualising PAMP-PRR interactions using nanoscale imaging. *Methods Mol Biol* 799:253–66
- Turkheimer FE, Edison P, Pavese N, Roncaroli F, Anderson AN, Hammers A, Gerhard A, Hinz R, Tai YF, Brooks DJ (2007) Reference and target region modeling of [11C]-(R)-PK11195 brain studies. *J Nucl Med* 48:158–67

- Turkman N, Shavrin A, Ivanov RA, Rabinovich B, Volgin A, Gelovani JG, Alauddin MM (2011) Fluorinated cannabinoid CB2 receptor ligands: synthesis and in vitro binding characteristics of 2-oxoquinoline derivatives. *Bioorg Med Chem* 19:5698–707
- Turner MR, Cagnin A, Turkheimer FE, Miller CC, Shaw CE, Brooks DJ, Leigh PN, Banati RB (2004) Evidence of widespread cerebral microglial activation in amyotrophic lateral sclerosis: an [¹¹C](R)-PK11195 positron emission tomography study. *Neurobiol Dis* 15:601–9
- Turrin NP, Rivest S (2006) Molecular and cellular immune mediators of neuroprotection. *Mol Neurobiol* 34:221–42
- Udan ML, Ajit D, Crouse NR, Nichols MR (2008) Toll-like receptors 2 and 4 mediate Abeta(1-42) activation of the innate immune response in a human monocytic cell line. *J Neurochem* 104:524–33
- Van Camp N, Boisgard R, Kuhnast B, Theze B, Viel T, Gregoire MC, Chauveau F, Boutin H, Katsifis A, Dolle F, Tavitian B (2010) In vivo imaging of neuroinflammation: a comparative study between [(18)F]PBR111, [(11)C]CLINME and [(11)C]PK11195 in an acute rodent model. *Eur J Nucl Med Mol Imaging* 37:962–72
- Vandeputte C, Evens N, Toelen J, Deroose CM, Bosier B, Ibrahim A, Van der Perren A, Gijssbers R, Janssen P, Lambert DM, Verbruggen A, Debyser Z, Bormans G, Baekelandt V, Van Laere K (2011) A PET brain reporter gene system based on type 2 cannabinoid receptors. *J Nucl Med* 52:1102–9
- Vas A, Shchukin Y, Karrenbauer VD, Cselenyi Z, Kostulas K, Hillert J, Savic I, Takano A, Halldin C, Gulyas B (2008) Functional neuroimaging in multiple sclerosis with radiolabelled glia markers: preliminary comparative PET studies with [¹¹C]vinpocetine and [¹¹C]PK11195 in patients. *J Neurol Sci* 264:9–17
- Veiga S, Carrero P, Pernia O, Azcoitia I, Garcia-Segura LM (2007) Translocator protein 18 kDa is involved in the regulation of reactive gliosis. *Glia* 55:1426–36
- Vellinga MM, Oude Engberink RD, Seewann A, Pouwels PJ, Wattjes MP, van der Pol SM, Pering C, Polman CH, de Vries HE, Geurts JJ, Barkhof F (2008) Pluriformity of inflammation in multiple sclerosis shown by ultra-small iron oxide particle enhancement. *Brain* 131:800–7
- Venneti S, Bonneh-Barkay D, Lopresti BJ, Bissel SJ, Wang G, Mathis CA, Piatak Jr M, Lifson JD, Nyaundi JO, Murphey-Corb M, Wiley CA (2008a) Longitudinal in vivo positron emission tomography imaging of infected and activated brain macrophages in a macaque model of human immunodeficiency virus encephalitis correlates with central and peripheral markers of encephalitis and areas of synaptic degeneration. *Am J Pathol* 172:1603–16
- Venneti S, Lopresti BJ, Wang G, Hamilton RL, Mathis CA, Klunk WE, Apte UM, Wiley CA (2009) PK11195 labels activated microglia in Alzheimer's disease and in vivo in a mouse model using PET. *Neurobiol Aging* 30:1217–1226
- Venneti S, Wang G, Wiley CA (2007) Activated macrophages in HIV encephalitis and a macaque model show increased [³H](R)-PK11195 binding in a PI3-kinase-dependent manner. *Neurosci Lett* 426:117–22
- Venneti S, Wang G, Wiley CA (2008b) The high affinity peripheral benzodiazepine receptor ligand DAA1106 binds to activated and infected brain macrophages in areas of synaptic degeneration: implications for PET imaging of neuroinflammation in lentiviral encephalitis. *Neurobiol Dis* 29:232–41
- Versijpt J, Debruyne JC, Van Laere KJ, De Vos F, Keppens J, Strijckmans K, Achten E, Slegers G, Dierckx RA, Korf J, De Reuck JL (2005) Microglial imaging with positron emission tomography and atrophy measurements with magnetic resonance imaging in multiple sclerosis: a correlative study. *Mult Scler* 11:127–34
- Vezzani A, Aronica E, Mazarati A, Pittman QJ (2011) Epilepsy and brain inflammation. *Exp Neurol* E-pub ahead of print
- Waezeggars Y, Klein M, Miletic H, Himmelreich U, Li H, Monfared P, Herrlinger U, Hoehn M, Coenen HH, Weller M, Winkeler A, Jacobs AH (2008) Multimodal imaging of neural progenitor cell fate in rodents. *Mol Imaging* 7:77–91
- Waezeggars Y, Monfared P, Viel T, Winkeler A, Voges J, Jacobs AH (2009) Methods to monitor gene therapy with molecular imaging. *Methods* 48:146–60
- Wagner S, Breyholz HJ, Law MP, Faust A, Holtke C, Schroer S, Haufe G, Levkau B, Schober O, Schafers M, Kopka K (2007) Novel fluorinated derivatives of the broad-spectrum MMP inhibitors N-hydroxy-2(R)-[[4-methoxyphenyl)sulfonyl](benzyl)- and (3-picoly)-amino]-3-methylbutanamide as potential tools for the molecular imaging of activated MMPs with PET. *J Med Chem* 50:5752–64
- Wang Q, Tang XN, Yenari MA (2007) The inflammatory response in stroke. *J Neuroimmunol* 184:53–68
- Wiley CA, Lopresti BJ, Becker JT, Boada F, Lopez OL, Mellors J, Meltzer CC, Wisniewski SR, Mathis CA (2006) Positron emission tomography imaging of peripheral benzodiazepine receptor binding in human immunodeficiency virus-infected subjects with and without cognitive impairment. *J Neurovirol* 12:262–71
- Winkeler A, Boisgard R, Awde AR, Dubois A, Theze B, Zheng J, Ciobanu L, Dolle F, Viel T, Jacobs AH, Tavitian B (2012) The translocator protein ligand [(18)F]DPA-714 images glioma and activated microglia in vivo. *Eur J Nucl Med Mol Imaging* E-pub ahead of print
- Winkeler A, Boisgard R, Martin A, Tavitian B (2010) Radioisotopic imaging of neuroinflammation. *J Nucl Med* 51:1–4
- Wunder A, Klohs J, Dirnagl U (2009) Non-invasive visualization of CNS inflammation with nuclear and optical imaging. *Neuroscience* 158:1161–73
- Yiangou Y, Facer P, Durrenberger P, Chessell IP, Naylor A, Bountra C, Banati RR, Anand P (2006) COX-2, CB2 and P2X7-immunoreactivities are increased in activated microglial cells/macrophages of multiple sclerosis and amyotrophic lateral sclerosis spinal cord. *BMC Neurol* 6:12
- Yokokura M, Mori N, Yagi S, Yoshikawa E, Kikuchi M, Yoshihara Y, Wakuda T, Sugihara G, Takebayashi K, Suda S, Iwata Y, Ueki T, Tsuchiya KJ, Suzuki K, Nakamura K, Ouchi Y (2011) In vivo changes in microglial activation and amyloid deposits in brain regions with hypometabolism in Alzheimer's disease. *Eur J Nucl Med Mol Imaging* 38:343–51
- Yong VW, Rivest S (2009) Taking advantage of the systemic immune system to cure brain diseases. *Neuron* 64:55–60
- Zaro-Weber O, Moeller-Hartmann W, Heiss WD, Sobesky J (2010) A simple positron emission tomography-based calibration for perfusion-weighted magnetic resonance maps to optimize penumbral flow detection in acute stroke. *Stroke* 41:1939–45



This work is licensed under the Creative Commons Attribution-NonCommercial-No Derivative Works 3.0 Unported License. To view a copy of this license, visit <http://creativecommons.org/licenses/by-nc-nd/3.0/>

APPENDIX

Principle investigators of the INMiND consortium:

AH Jacobs, M Schaefer, and O Schober, European Institute for Molecular Imaging and Department of Nuclear Medicine, University of Münster, Germany; A Maggi and E Vegeto, Centre of Excellence on Neurodegenerative Diseases, University of Milano, Italy; L Aigner, Institute of Molecular Regenerative Medicine, Paracelsus Medical University Salzburg, Austria; S Chalon, J Vercouillie, D Guilloteau, and V Camus, Imaging and Brain Unit, University of Tours, France; S Aime and E Terreno, Centre for Molecular Imaging, University of Torino, Italy; AM Planas, Clinical and Experimental Neurosciences, August Pi i Sunyer Biomedical Research Institute, Barcelona, Spain; A Van der Linden and P Ponsaerts, Bio-Imaging Lab, University of Antwerp, Belgium; B Tavitian, R Boisgard, A Winkeler, and F Dollé, Institute for Biomedical Imaging, Alternative Energies and Atomic Energy Commission (CEA), France; AA Lammertsma and AD Windhorst, Department of Nuclear Medicine and PET Research, University of Amsterdam, The Netherlands; K Herholz and A Gerhard, Wolfson Molecular Imaging Centre, The University of Manchester, United Kingdom; H Boutin, Faculty of Life Sciences, The University of Manchester, UK; D Perani and RM Moresco, Vita-Salute San Raffaele University,

Milano, Italy; C Halldin and A Varrone, Karolinska Institute, Department of Clinical Neuroscience, Stockholm, Sweden; A Nordberg, Department of Geriatric Medicine, Karolinska Institute, Stockholm, Sweden; Koen Van Laere and G Bormans, Leuven Research Institute for Neurodegenerative Disorders, Catholic University Leuven, Belgium; V Baekelandt, Laboratory for Neurobiology and Gene Therapy, Catholic University Leuven, Belgium; GM Knudsen and LH Pinborg, Neurobiology Research Unit, Copenhagen University Hospital, Denmark; S Pappatà and M Quarantelli, Institute of Biostructure and Bioimaging, Italian National Research Council, Naples, Italy; J Rinne, Turku PET Centre, University of Turku, Finland; C Holmes, Clinical Neuroscience Division, University of Southampton, UK; DJ Brooks, F Roncaroli, and F Turkheimer, Centre of Neuroscience, Department of Medicine, Imperial College, London, UK; M Kassiou, Brain and Mind Research Institute, The University of Sydney, Australia; MSZ Keller-mayer, Nanobiotechnology and *In vivo* Imaging Centre, Semmelweis University, Budapest, Hungary; MT Heneka, Clinical Neuroscience Unit, University Hospital Bonn, Germany; P Ciana, Transgenic Operative Products Srl, Lodi, Italy; LR Perk, BV Cyclotron VU, Amsterdam, The Netherlands; C Cavallotti, CAGE Chemicals Srl, Novara, Italy; M Alavijeh, Pharmidex Pharmaceutical Services Ltd, London, UK; D Máthé, MEDISO, Budapest, Hungary; LC Rønn and D Strøbæk, NeuroSearch AS, Ballerup, Denmark.