

## Nodular lesion at the flexor tendon of the finger

Published on 19.05.2020

**ISSN:** 1563-4086

**Section:** Musculoskeletal system

**Area of Interest:** Extremities Musculoskeletal system

**Imaging Technique:** Conventional radiography

**Imaging Technique:** MR

**Imaging Technique:** Ultrasound

Case Type: Clinical Cases

**Authors:** Jesper Dierickx<sup>1,2</sup>, Luc Walschot<sup>3</sup>, Filip Vanhoenacker<sup>1,2,4</sup>

**Patient:** 58 years, male

### Clinical History:

A 58-year-old male presents with a slowly progressive nodule for 6 months on the volar side of the proximal phalanx of the left fifth digit.

### Imaging Findings:

A nodule is located on the volar side of the proximal interphalangeal joint of the left digit, contacting the superficial side of the flexor tendon. On a lateral radiograph (Fig. 1), a nonspecific soft tissue swelling is seen, with absent calcifications. A longitudinal sonographic view (Fig. 2) demonstrates a hypoechoic lesion with Doppler signal at the periphery. On T1-weighted images (T1-WI), the lesion is isointense to muscle tissue (Fig. 3). On fat-suppressed T1-WI, the nodule is of heterogeneous signal (Fig. 4). On T2-WI, the lesion is heterogeneous with intralesional areas of intermediate and high signal intensity (Fig. 5). On fat-suppressed T2-WI, a predominant hyperintense signal is seen (Fig. 6). On T2\* sequences, there is no significant blooming artefact (Fig. 7). After IV administration of gadolinium contrast, there is vivid, predominantly peripheral contrast enhancement (Fig. 8).

### Discussion:

The resection specimen shows a whitish nodule, compatible with a gouty tophus (Fig. 9). Past history included acute gout in both first metatarsophalangeal joints, 8 years previously, for which he was treated by colchicine. His uric acid level was slightly elevated.

A gouty tophus typically represents a chronic granulomatous inflammatory response to a central core of monosodium urate crystals surrounded by a cellular and fibrovascular zone. Typically, they manifest years after an initial, acute gout arthritis, in the context of long-standing hyperuricemia [1]. De novo presentation has been described as well [1].

Macroscopically, soft tissue tophi appear as white nodules. Typical locations are the first metatarsophalangeal joint, olecranon, patella, Achilles tendon, ear and the volar side of the distal phalanges of the fingers [1,2]. Hands and wrist are often affected in advanced cases, most commonly the interphalangeal joints [2].

On conventional radiographs, gouty tophi typically have an intermediate to high density. In patients without renal insufficiency, they may calcify. When present, erosions in the adjacent bone are typically peri-articularly located, well-circumscribed with overhanging edges and parallel to the long axis of the bone. Involvement of the articular surface is a late manifestation [3]. On ultrasound, tophi have a heterogeneously hypoechoic appearance, with peripheral increased Doppler signal [2]. Ultrasound may also depict the relationship with the adjacent tendon and osseous pressure erosions [2,4]. Gouty tophi have rather nonspecific MRI findings. They are of low to intermediate signal intensity on T1-WI and of high signal intensity on T2-WI, with predominantly peripheral contrast enhancement. The enhancement is

Tophaceous gout should be included in the differential diagnosis of nodular lesions of the flexor tendon. Correlation of imaging and clinical history is the clue to the diagnosis.

**Differential Diagnosis List:** Gouty tophus, Giant cell tumour of the tendon , Synovial cell sarcoma , Melanoma , Tendon fibroma

**Final Diagnosis:** Gouty tophus

**References:**

- Chhana A, Dalbeth N. (2015) The Gouty Tophus: a Review. *Cur Rheumatol Rep.* 17:19. (PMID:[25761926](#)).
- Vanhoenacker FM, Eyselbergs M, Van Hul E, Van Dyck P, De Schepper AM. (2011) Pseudotumoural soft tissue lesions of the hand and wrist: a pictorial review. *Insights Imaging.* 2:319–33 (PMID:[22347956](#)).
- Jacques T, Michelin P, Badr S, Nasuto M, Lefebvre G, Larkman N, Cotten A. (2017) Conventional Radiology in Crystal Arthritis: Gout, Calcium Pyrophosphate Deposition, and Basic Calcium Phosphate Crystals. *Radiol Clin North Am.* 55:967–84 (PMID: [28774457](#)).
- de Ávila Fernandes E, Sandim GB, Mitraud SA V., Kubota ES, Ferrari AJL, Fernandes ARC. (2010) Sonographic description and classification of tendinous involvement in relation to tophi in chronic tophaceous gout. *Insights Imaging.* 1:143–8 (PMID: [22347911](#)).
- Chowalloor P, Siew T, Keen H. (2014) Imaging in gout: A review of recent developments. *Ther Adv Musculoskelet Dis.* 6:131-143 (PMID: [25342993](#)).
- Gamala M, Jacobs JWG, van Laar JM. (2019) The diagnostic performance of dual energy CT for diagnosing gout: a systematic literature review and meta-analysis. *Rheumatology.* 58:2117–21 (PMID:[31089688](#)).
- Ziegeler K, Hermann S, Hermann KGA, Hamm B, Diekhoff T. (2019) Dual-energy CT in the differentiation of crystal depositions of the wrist: does it have added value? *Skeletal Radiol.* Epub ahead of print (PMID:[31802167](#)).
- Shah A, Botchu R, Davies AM, James SL. (2017) So-Called Fibrohistiocytic Tumours. In: Vanhoenacker FM, Parizel PM, Gielen JL (eds). *Imaging of Soft Tissue Tumors.* Fourth Edit. Springer International Publishing. 311–37 (DOI: [https://doi.org/10.1007/978-3-319-46679-8\\_14](https://doi.org/10.1007/978-3-319-46679-8_14)) .
- Sprengel SD, Weber M-A, Degryse HR, Vanhoenacker FM. (2017) Tumors of Uncertain Differentiation. In: Vanhoenacker FM, Parizel PM, Gielen JL (eds). *Imaging of Soft Tissue Tumors.* Fourth Edi. Springer International Publishing. 425–82 (DOI: [https://doi.org/10.1007/978-3-319-46679-8\\_18](https://doi.org/10.1007/978-3-319-46679-8_18)).
- Vandevenne JE, De Schepper AM. (2017) Fibroblastic/Myofibroblastic Tumors. In: Vanhoenacker FM, Parizel PM, Gielen JL (eds). *Imaging of Soft Tissue Tumors.* Fourth Edi. Springer International Publishing. 243–309 (DOI: [https://doi.org/10.1007/978-3-319-46679-8\\_13](https://doi.org/10.1007/978-3-319-46679-8_13) ).

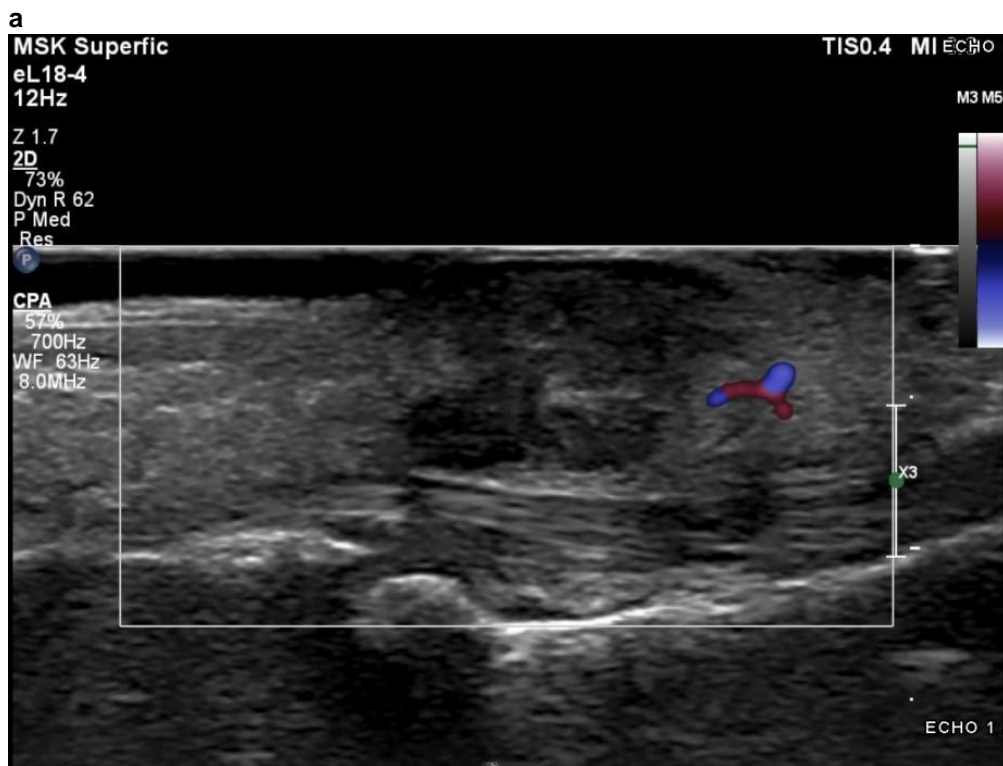
**Figure 1**

a



**Description:** A lateral radiograph demonstrates a nonspecific soft tissue swelling on the volar side of the proximal phalanx of the left fifth digit (arrow). **Origin:** © Department of Radiology, Algemeen Ziekenhuis Sint-Maarten, Mechelen, Belgium, 2019

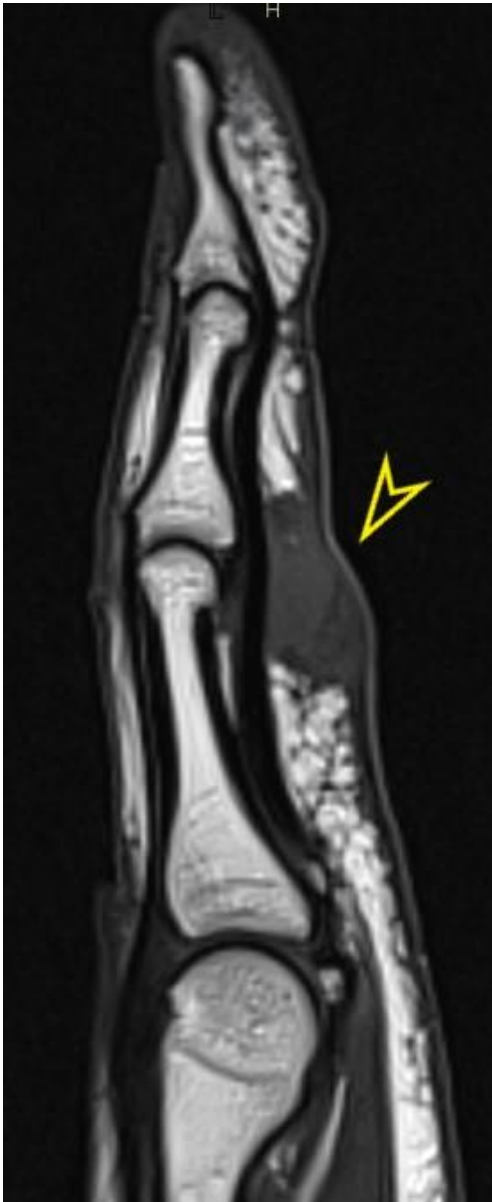
## Figure 2



**Description:** A longitudinal ultrasound view shows a hypoechoic subcutaneous lesion, with contact with the flexor tendon. There is Doppler signal in the periphery of the lesion. **Origin:** © Department of Radiology, Algemeen Ziekenhuis Sint-Maarten, Mechelen, Belgium, 2019

**Figure 3**

a



**Description:** Sagittal T1-WI shows an isointense (to muscle) subcutaneous nodule with intimate contact with the flexor tendon (yellow arrow). **Origin:** © Department of Radiology, Algemeen Ziekenhuis Sint-Maarten, Mechelen, Belgium, 2019

## Figure 4

a

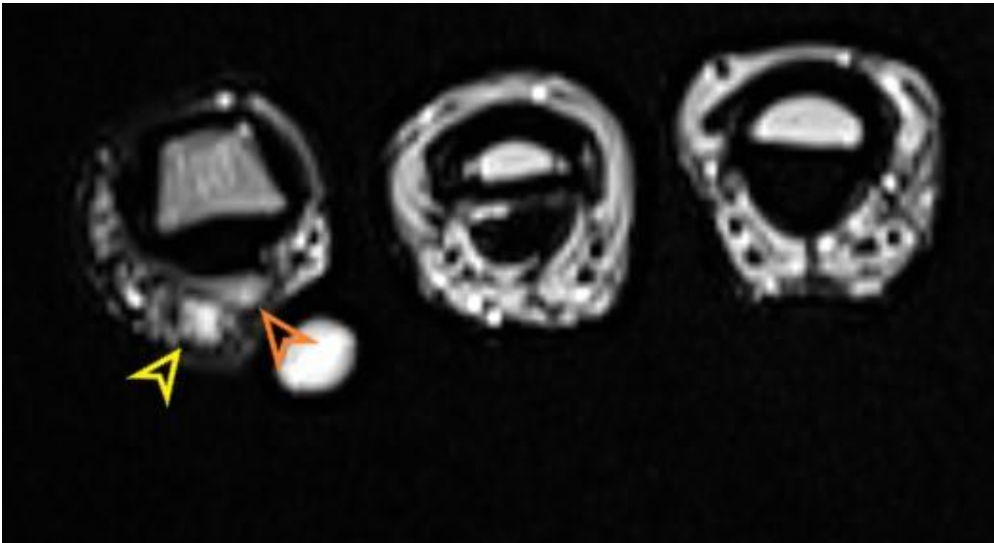


**Description:** Sagittal fat suppressed (FS) T1-WI demonstrates a heterogeneous signal of the lesion.

**Origin:** © Department of Radiology, Algemeen Ziekenhuis Sint-Maarten, Mechelen, Belgium, 2019

**Figure 5**

a



**Description:** Axial T2-WI shows heterogeneous signal with areas of high (yellow arrow) and intermediate (orange arrow) signal. **Origin:** © Department of Radiology, Algemeen Ziekenhuis Sint-Maarten, Mechelen, Belgium,2019

**Figure 6**

a



**Description:** Sagittal fat suppressed T2-WI shows hyperintense signal of the lesion (yellow arrow).

**Origin:** © Department of Radiology, Algemeen Ziekenhuis Sint-Maarten, Mechelen, Belgium, 2019



## Figure 7

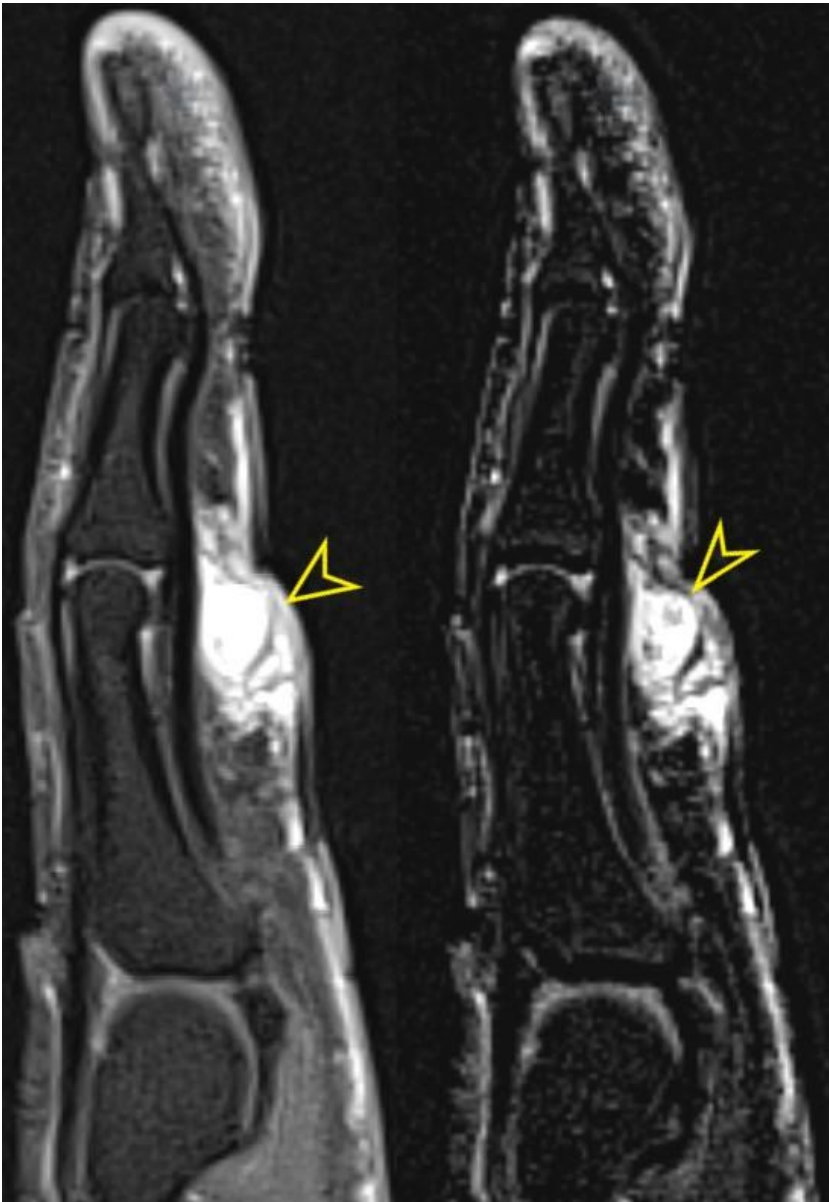
a



**Description:** Sagittal T2\*, showing no significant blooming artefact. **Origin:** © Department of Radiology, Algemeen Ziekenhuis Sint-Maarten, Mechelen, Belgium, 2019

**Figure 8**

a



**Description:** Sagittal contrast-enhanced fat suppressed T1-WI and sagittal subtraction images, demonstrating vivid, inhomogeneous contrast enhancement (yellow arrow). **Origin:** © Department of Radiology, Algemeen Ziekenhuis Sint-Maarten, Mechelen, Belgium, 2019

## Figure 9

a



**Description:** Macroscopic resection specimen shows a whitish nodule, compatible with a gouty tophus

**Origin:** © Department of Orthopedic Surgery, Algemeen Ziekenhuis Sint-Maarten, Mechelen, Belgium, 2019