



Full length article



## What is in the fish? Collaborative trial in suspect and non-target screening of organic micropollutants using LC- and GC-HRMS

Wiebke Dürig<sup>a,1</sup>, Sofia Lindblad<sup>a,1</sup>, Oksana Golovko<sup>a</sup>, Georgios Gkotsis<sup>b</sup>, Reza Aalizadeh<sup>b</sup>, Maria-Christina Nika<sup>b</sup>, Nikolaos Thomaidis<sup>b</sup>, Nikiforos A. Alygizakis<sup>b,c</sup>, Merle Plassmann<sup>d</sup>, Peter Haglund<sup>e</sup>, Qiuguo Fu<sup>f,g</sup>, Juliane Hollender<sup>f,h</sup>, Jade Chaker<sup>i</sup>, Arthur David<sup>i</sup>, Uwe Kunkel<sup>j</sup>, André Macherius<sup>j</sup>, Lidia Belova<sup>k</sup>, Giulia Poma<sup>k</sup>, Hugues Preud'Homme<sup>l</sup>, Catherine Munsch<sup>m</sup>, Yann Aminot<sup>m</sup>, Carsten Jaeger<sup>n</sup>, Jan Lisec<sup>n</sup>, Martin Hansen<sup>o</sup>, Katrin Vorkamp<sup>o</sup>, Linyan Zhu<sup>o</sup>, Francesca Cappelli<sup>p</sup>, Claudio Roscioli<sup>p</sup>, Sara Valsecchi<sup>p</sup>, Renzo Bagnati<sup>q</sup>, Belén González<sup>r,s</sup>, Ailette Prieto<sup>r,s</sup>, Olatz Zuloaga<sup>r,s</sup>, Ruben Gil-Solsona<sup>t,u,v</sup>, Pablo Gago-Ferrero<sup>t,v</sup>, Sara Rodriguez-Mozaz<sup>t,u</sup>, Hélène Budzinski<sup>w</sup>, Marie-Helene Devier<sup>w</sup>, Georg Dierkes<sup>x</sup>, Lise Boulard<sup>x,y</sup>, Griet Jacobs<sup>z</sup>, Stefan Voorspoels<sup>z</sup>, Heinz Rüdell<sup>zz</sup>, Lutz Ahrens<sup>a,\*</sup>

<sup>a</sup> Department of Aquatic Sciences and Assessment, Swedish University of Agricultural Sciences (SLU), Box 7050, 75007 Uppsala, Sweden

<sup>b</sup> Department of Chemistry, National and Kapodistrian University of Athens, 15771 Athens, Greece

<sup>c</sup> Environmental Institute, Okružná 784/42, 97241 Koš, Slovakia

<sup>d</sup> Department of Environmental Science, Stockholm University, 10691 Stockholm, Sweden

<sup>e</sup> Department of Chemistry, Chemical Biological Centre (KBC), Umeå University, Linnaeus väg 6, 90187 Umeå, Sweden

<sup>f</sup> Eawag: Swiss Federal Institute of Aquatic Science and Technology, Überlandstrasse 133, 8600 Dübendorf, Switzerland

<sup>g</sup> Helmholtz Centre for Environmental Research - UFZ, Permoserstraße 15, 04318 Leipzig, Germany

<sup>h</sup> Institute of Biogeochemistry and Pollutant Dynamics, ETH Zürich, Universitätsstrasse 16, 8092 Zürich, Switzerland

<sup>i</sup> Université de Rennes, Inserm, EHESP, Irset - UMR S, 1085 Rennes, France

<sup>j</sup> Bavarian Environment Agency, Bürgermeister-Ulrich-Straße 160, 86179 Augsburg, Germany

<sup>k</sup> Toxicological Centre, University of Antwerp, Universiteitsplein 1, 2610 Wilrijk, Belgium

<sup>l</sup> IPREM-UMR5254, E2S UPPA, CNRS, 2 avenue Angot, 64053 Pau cedex, France

<sup>m</sup> Ifremer, CCEM Contamination Chimique des Écosystèmes Marins, 44000 Nantes, France

<sup>n</sup> Bundesanstalt für Materialforschung und -prüfung (BAM), Analytical Chemistry, Richard-Willstätter-Straße 11, 12489 Berlin, Germany

<sup>o</sup> Department of Environmental Science, Aarhus University, Frederiksborgvej 399, 4000 Roskilde, Denmark

<sup>p</sup> Water Research Institute, National Research Council of Italy, Via del Mulino 19, 20861 Brugherio MB, Italy

<sup>q</sup> Department of Environmental Health Sciences, Istituto di Ricerche Farmacologiche Mario Negri IRCCS, Via Mario Negri 2, 20156 Milan, Italy

<sup>r</sup> Department of Analytical Chemistry, Faculty of Science and Technology, University of the Basque Country (UPV/EHU), Barrio Sarriena s/n, 48940 Leioa, Spain

<sup>s</sup> Research Centre for Experimental Marine Biology and Biotechnology (PIE), University of the Basque Country (UPV/EHU), Areatza Pasealekua 47, 48620 Plentzia, Spain

<sup>t</sup> Catalan Institute for Water Research (ICRA), Carrer Emili Grahit 101, 17003 Girona, Spain

<sup>u</sup> Universitat de Girona, Girona, Spain

<sup>v</sup> Institute of Environmental Assessment and Water Research – Severo Ochoa Excellence Center (IDAEA), Spanish Council of Scientific Research (CSIC), Barcelona 08034, Spain

<sup>w</sup> University Bordeaux, CNRS, Bordeaux INP, EPOC, UMR 5805, 33600 Pessac, France

<sup>x</sup> Federal Institute of Hydrology, Am Mainzer Tor 1, 56068 Koblenz, Germany

\* Corresponding author.

E-mail addresses: [wiebke.durig@slu.se](mailto:wiebke.durig@slu.se) (W. Dürig), [sofia.lindblad@slu.se](mailto:sofia.lindblad@slu.se) (S. Lindblad), [Oksana.Golovko@slu.se](mailto:Oksana.Golovko@slu.se) (O. Golovko), [geogkotsis@chem.uoa.gr](mailto:geogkotsis@chem.uoa.gr) (G. Gkotsis), [raalizadeh@chem.uoa.gr](mailto:raalizadeh@chem.uoa.gr) (R. Aalizadeh), [nikamar@chem.uoa.gr](mailto:nikamar@chem.uoa.gr) (M.-C. Nika), [ntho@chem.uoa.gr](mailto:ntho@chem.uoa.gr) (N. Thomaidis), [alygizakis@ei.sk](mailto:alygizakis@ei.sk) (N.A. Alygizakis), [merle.plassmann@aces.su.se](mailto:merle.plassmann@aces.su.se) (M. Plassmann), [peter.haglund@umu.se](mailto:peter.haglund@umu.se) (P. Haglund), [qiuguo.fu@ufz.de](mailto:qiuguo.fu@ufz.de) (Q. Fu), [juliane.hollender@eawag.ch](mailto:juliane.hollender@eawag.ch) (J. Hollender), [jade.chaker@ehesp.fr](mailto:jade.chaker@ehesp.fr) (J. Chaker), [arthur.david@ehesp.fr](mailto:arthur.david@ehesp.fr) (A. David), [uwe.kunkel@lfu.bayern.de](mailto:uwe.kunkel@lfu.bayern.de) (U. Kunkel), [andre.macherius@lfu.bayern.de](mailto:andre.macherius@lfu.bayern.de) (A. Macherius), [lidia.belova@uantwerpen.be](mailto:lidia.belova@uantwerpen.be) (L. Belova), [giulia.poma@uantwerpen.be](mailto:giulia.poma@uantwerpen.be) (G. Poma), [hugues.preudhomme@univ-pau.fr](mailto:hugues.preudhomme@univ-pau.fr) (H. Preud'Homme), [catherine.munsch@ifremer.fr](mailto:catherine.munsch@ifremer.fr) (C. Munsch), [yann.aminot@ifremer.fr](mailto:yann.aminot@ifremer.fr) (Y. Aminot), [carsten.jaeger@bam.de](mailto:carsten.jaeger@bam.de) (C. Jaeger), [jan.lisec@bam.de](mailto:jan.lisec@bam.de) (J. Lisec), [martin.hansen@envs.au.dk](mailto:martin.hansen@envs.au.dk) (M. Hansen), [kvo@envs.au.dk](mailto:kvo@envs.au.dk) (K. Vorkamp), [lzhu@envs.au.dk](mailto:lzhu@envs.au.dk) (L. Zhu), [cappelli@irsa.cnr.it](mailto:cappelli@irsa.cnr.it) (F. Cappelli), [roscioli@irsa.cnr.it](mailto:roscioli@irsa.cnr.it) (C. Roscioli), [valsecchi@irsa.cnr.it](mailto:valsecchi@irsa.cnr.it) (S. Valsecchi), [renzo.bagnati@marionegri.it](mailto:renzo.bagnati@marionegri.it) (R. Bagnati), [belen.gonzalez@ehu.eus](mailto:belen.gonzalez@ehu.eus) (B. González), [ailette.prieto@ehu.eus](mailto:ailette.prieto@ehu.eus) (A. Prieto), [olatz.zuloaga@ehu.eus](mailto:olatz.zuloaga@ehu.eus) (O. Zuloaga), [ruben.gil.solsona@csic.es](mailto:ruben.gil.solsona@csic.es) (R. Gil-Solsona), [pablo.gago@idaea.csic.es](mailto:pablo.gago@idaea.csic.es) (P. Gago-Ferrero), [srodriguez@icra.cat](mailto:srodriguez@icra.cat) (S. Rodriguez-Mozaz), [helene.budzinski@u-bordeaux.fr](mailto:helene.budzinski@u-bordeaux.fr) (H. Budzinski), [marie-helene.devier@u-bordeaux.fr](mailto:marie-helene.devier@u-bordeaux.fr) (M.-H. Devier), [Dierkes@bafg.de](mailto:Dierkes@bafg.de) (G. Dierkes), [lise.boulard@pasteur.fr](mailto:lise.boulard@pasteur.fr) (L. Boulard), [griet.jacobs@vito.be](mailto:griet.jacobs@vito.be) (G. Jacobs), [stefan.voorspoels@vito.be](mailto:stefan.voorspoels@vito.be) (S. Voorspoels), [heinz.ruedel@ime.fraunhofer.de](mailto:heinz.ruedel@ime.fraunhofer.de) (H. Rüdell), [lutz.ahrens@slu.se](mailto:lutz.ahrens@slu.se) (L. Ahrens).

<https://doi.org/10.1016/j.envint.2023.108288>

Received 25 July 2023; Received in revised form 4 October 2023; Accepted 23 October 2023

Available online 25 October 2023

0160-4120/© 2023 The Authors. Published by Elsevier Ltd. This is an open access article under the CC BY license (<http://creativecommons.org/licenses/by/4.0/>).

<sup>†</sup> Metabolomics Core Facility, Centre de Ressources et Recherches Technologiques (C2RT), Institut Pasteur, 25-28 Rue du Dr Roux, 75015 Paris, France

<sup>‡</sup> Flemish Institute for Technological Research (VITO), Unit Separation and Conversion Technology, Boeretang 200, 2400 Mol, Belgium

<sup>‡‡</sup> Fraunhofer Institute for Molecular Biology and Applied Ecology (Fraunhofer IME), Auf dem Aberg 1, 57392 Schmallenberg, Germany

## ARTICLE INFO

## Keywords:

Suspect and non-target analysis

Biota

LC-HRMS

GC-HRMS

Collaborative trial

Exposome

## ABSTRACT

A collaborative trial involving 16 participants from nine European countries was conducted within the NORMAN network in efforts to harmonise suspect and non-target screening of environmental contaminants in whole fish samples of bream (*Abramis brama*). Participants were provided with freeze-dried, homogenised fish samples from a contaminated and a reference site, extracts (spiked and non-spiked) and reference sample preparation protocols for liquid chromatography (LC) and gas chromatography (GC) coupled to high resolution mass spectrometry (HRMS). Participants extracted fish samples using their in-house sample preparation method and/or the protocol provided. Participants correctly identified 9–69 % of spiked compounds using LC-HRMS and 20–60 % of spiked compounds using GC-HRMS. From the contaminated site, suspect screening with participants' own suspect lists led to putative identification of on average ~145 and ~20 unique features per participant using LC-HRMS and GC-HRMS, respectively, while non-target screening identified on average ~42 and ~56 unique features per participant using LC-HRMS and GC-HRMS, respectively. Within the same sub-group of sample preparation method, only a few features were identified by at least two participants in suspect screening (16 features using LC-HRMS, 0 features using GC-HRMS) and non-target screening (0 features using LC-HRMS, 2 features using GC-HRMS). The compounds identified had log octanol/water partition coefficient ( $K_{OW}$ ) values from -9.9 to 16 and mass-to-charge ratios ( $m/z$ ) of 68 to 761 (LC-HRMS and GC-HRMS). A significant linear trend was found between log  $K_{OW}$  and  $m/z$  for the GC-HRMS data. Overall, these findings indicate that differences in screening results are mainly due to the data analysis workflows used by different participants. Further work is needed to harmonise the results obtained when applying suspect and non-target screening approaches to environmental biota samples.

## 1. Introduction

Risk assessment and management of potentially harmful chemical substances relies on environmental and health data of high quality, including indications of emerging issues (Wang et al., 2020, Dulio et al., 2018). Conventional chemical target analyses typically use liquid chromatography (LC) and gas chromatography (GC) with low resolution mass spectrometry (MS), but wide-scope target, suspect and non-target screening strategies have been developed in recent years to identify contaminants of emerging concern (CECs) in environmental samples (Chen et al. 2022). Hereby, suspect screening requires prior knowledge about the compounds of interest to screen for known compounds or suspects, whereas non-target screening does not consider a tentative structure from the start (Hollender et al., 2023). These techniques rely on high resolution mass spectrometry (HRMS) (Chen et al., 2022; Hogenboom et al., 2009; Hollender et al., 2017; Sobek et al., 2016) and have been applied to e.g. water samples (Menger et al., 2020, Wode et al., 2015, Diamanti et al., 2020, Badea et al., 2020) and biota samples (Álvarez-Ruiz and Picó, 2020, Vandermeersch et al., 2015, Rebyrk and Haglund, 2021). While these approaches appear promising as complementary tools for environmental monitoring and support for chemicals management, data comparability is a challenge (Hollender et al., 2019, Alygizakis et al., 2018, Hohrenk et al., 2020, Schulze et al., 2020). Biotic samples in particular represent a complex matrix and co-extraction of abundant endogenous molecules (e.g. lipids, residual proteins) can interfere with the instrumental analysis of CECs. This “matrix effect” typically encompasses disturbances such as background increase, chromatographic alteration (retention time shifts, peak broadening) or ion suppression caused by preferential ionisation of matrix molecules (David et al., 2014, Hajeb et al., 2022, González-Gaya et al., 2021) and is sought minimised through rigorous clean-up steps in target analyses. Efforts are being made to develop generic and non-selective protocols to extract CECs with different physicochemical properties for suspect and non-target screening approaches, offering an acceptable compromise between selectivity and efficient removal of interfering matrix compounds (Dirtu et al., 2012, Fidalgo-Used et al., 2007, Knoll et al., 2020, Dürig et al., 2020, Xia et al., 2019, Baduel et al., 2015, Vitale et al., 2021,

Chaker et al., 2022). Furthermore, recently developed guidelines for sampling, sample preparation, chemical analysis and data analysis will likely contribute to more harmonisation in this rapidly developing field (Hollender et al., 2023; Caballero-Casero et al., 2021).

The NORMAN network started as a European research project in 2005 and focuses on CECs and innovative techniques in analytical chemistry. Particular emphasis is placed on data quality and comparability through harmonisation efforts and structured data sharing. NORMAN has a track record of conducting collaborative trials in emerging fields. Previous examples include interlaboratory studies on passive sampling (Schulze et al., 2021), analyses of water (Schymanski et al., 2015, Bader et al., 2016), dust (Rostkowski et al., 2019) and human tissues (Pourchet et al., 2020), and quality control of screening workflows (Bastian et al., 2020, Caballero-Casero et al., 2021). Harmonisation efforts have also been performed on sampling and target analysis of biota (Crimmins et al., 2018, Fakouri Baygi et al., 2020, Badry et al., 2020).

This paper describes a collaborative trial on suspect and non-target screening in biota performed under the auspices of the NORMAN network, using fish samples from Teltow Canal and Lake Stechlin (Germany). Teltow Canal was expected to have high levels of contaminants because it receives discharge from several wastewater treatment plants, while Lake Stechlin is relatively clean and was therefore used as a reference site. The objective was to assess the currently achievable level of harmonisation in suspect and non-target screening of whole-fish tissue through comparison of sample preparation protocols and suspect and non-target screening workflows based on LC-HRMS and GC-HRMS analysis.

## 2. Materials and methods

## 2.1. Samples and experimental design

Bream (*Abramis brama*) samples from the reference site Lake Stechlin (longitude 13.0278 N, latitude 53.1514E) and the more polluted site Teltow Canal (longitude 13.1900 N, latitude 52.3983E) were kindly provided by the Fraunhofer IME, Germany. Whole fish from the lake (15 individuals, 30–50 cm, 1–2 kg fish<sup>-1</sup>) and the canal (10 individuals, 40–46 cm, 0.8–1.3 kg fish<sup>-1</sup>) were homogenised by cryogenic grinding (Rüdel et al., 2008), freeze-dried and shipped to the Swedish University

<sup>1</sup> These authors contributed equally to the work.

of Agricultural Sciences (SLU), Sweden, for preparation of extracts for LC-HRMS and the National and Kapodistrian University of Athens (NKUA), Greece, for preparation of extracts for GC-HRMS and further preparation and distribution to project participants (see section 2.3).

At SLU/NKUA, a sub-sample of freeze-dried fish material from both sites was used to prepare reference extracts for analysis by LC-HRMS and GC-HRMS. The methods used for these extractions (Dürig et al., 2020, Badry et al., 2022), referred to as the reference methods, are described in detail in section 2.3. A second sub-sample of freeze-dried fish material from the reference lake was pre-spiked with 32 compounds for analysis by LC-HRMS ( $c = 50 \text{ ng mL}^{-1}$ , equivalent tissue concentration  $300 \text{ ng g}^{-1}$  dry weight (dw) for each compound) and with 19 compounds for analysis by GC-HRMS ( $c = 75 \text{ ng mL}^{-1}$ , equivalent tissue concentration  $25 \text{ ng g}^{-1}$  dw for each compound). Only 10 'known compounds' among the compounds used for spiking (5 for LC-HRMS and GC-HRMS, respectively) were revealed, while the remaining 'unknown compounds' ( $n = 41$ ) were not revealed to the participating laboratories prior to analysis (Table S1 in Supplementary data 1 (SD1)). The spiked compounds were selected based on relevance, previous detection in biota (Rebryk and Haglund, 2022, Vandermeersch et al., 2015) and represented a wide range of physicochemical properties ( $\log K_{OW}$  values  $-2.5$ – $10$  for LC-HRMS and  $0.2$ – $12$  for GC-HRMS; molecular mass  $162$ – $679$  Da for LC-HRMS and  $162$ – $949$  Da for GC-HRMS). Some participants prepared additional extracts for LC-HRMS and GC-HRMS following their own in-house methods for sample preparation and/or the reference methods using sub-samples of freeze dried fish material that was provided to them along with the pre-made reference extracts.

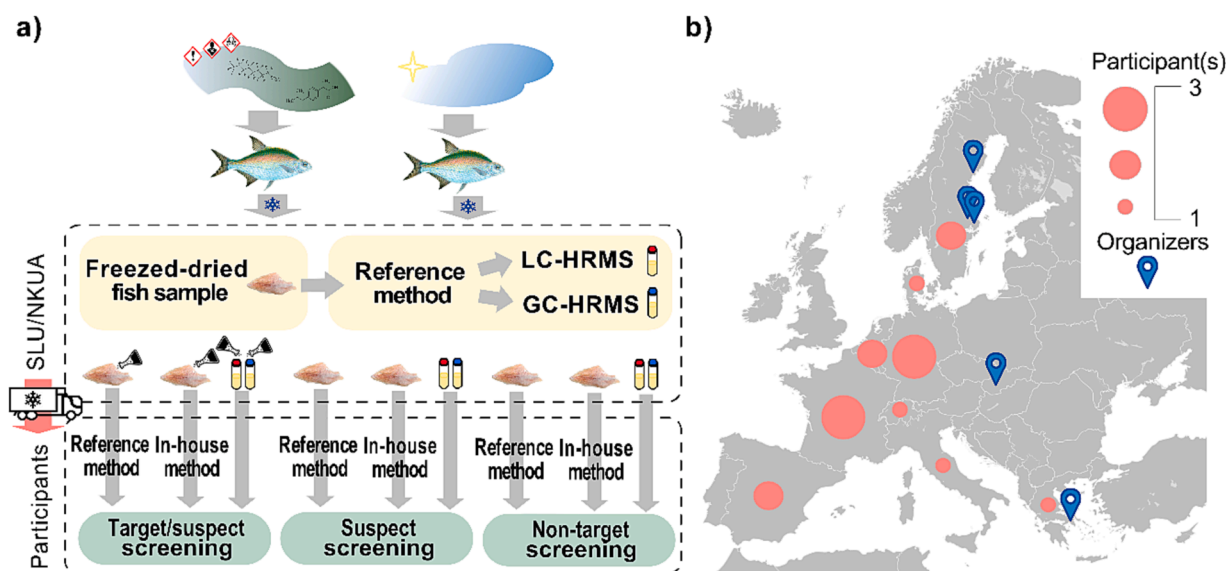
The reference extracts that were prepared with the reference methods and sequentially shipped to the participants were: i) two extracts from the reference site Lake Stechlin (non-spiked), for LC-HRMS and GC-HRMS, respectively; ii) two extracts from the reference site Lake Stechlin (spiked), for LC-HRMS and GC-HRMS, respectively; and iii) two extracts from the contaminated Teltow Canal site (non-spiked), for LC-HRMS and GC-HRMS, respectively (Fig. 1). In addition to the reference extracts, sub-samples of freeze-dried fish material from both sites (non-spiked freeze-dried fish material from Teltow Canal, and both spiked and non-spiked from Lake Stechlin) were provided to the participating laboratories, to allow them to prepare corresponding fish

homogenate samples with their own in-house sample preparation protocols and/or the reference methods. All participants analysed the extracts using their own HRMS instrumentation and data analysis approaches (Tables S2–S6 in SD1). The extracts of the spiked samples were analysed by the participants for the 10 known and the unknown compounds applying their own workflows, including their own suspect screening lists. The other extracts (non-spiked) were screened for the presence of CECs following the participants' suspect and non-target screening workflows. The difference between these approaches was that specific criteria had to be fulfilled for the non-target screening (based on abundance and origin, see section 2.5). Thus, the non-target screening was only applied to the samples from Teltow Canal with the criterion of at least a 10x difference in signal between Teltow Canal and Lake Stechlin.

In addition to the fish samples and reference extracts, two mixtures of the reference standards used for the spiked samples were provided to the participants. Retention time (RT) mixtures (two for LC-HRMS, intended for positive ( $n = 18$  compounds) and negative ( $n = 18$ ) electrospray ionisation (ESI) modes, respectively, and one for GC-HRMS ( $n = 24$ ,  $C_7$ – $C_{30}$  alkane mixture) were also distributed to the participants (see SD3), to facilitate quantitative structure-retention relationship (QSRR)-based predictions of RTs for unknown compounds (Aalizadeh et al., 2021). The spiking mixtures were prepared by mixing individual compound standards in methanol (for LC-HRMS) or hexane (for GC-HRMS), all purchased from commercial vendors (Wellington Laboratories, Sigma-Aldrich, European Pharmacopeia Reference Standard, UPS Reference Standard, and LGC Standards). The final concentration of individual compounds in the spiking mixtures was  $0.5 \text{ mg/L}$  for LC-HRMS analysis and  $1 \text{ mg/L}$  for GC-HRMS analysis (Table S1).

## 2.2. Participants and instrumental method choices

In total, 16 laboratories (allocated code letters A–P) from nine different European countries participated in the study, which had been announced within the NORMAN network (Fig. 1b). No previous experience of suspect or non-target screening was required, however all participants had experience with suspect or non-target screening. Fourteen participants performed analyses by LC-HRMS and five



**Fig. 1. Experimental design of the collaborative trial and participant map.** a) Design of the study. Fish samples and reference extracts prepared with the reference methods were sent to the participants for LC-HRMS and GC-HRMS analysis. The participants analysed the extracts provided and/or prepared their own extract(s) using their in-house sample preparation method(s) and/or the reference method. Spiked samples are indicated by an Erlenmeyer flask symbol and were analysed using suspect screening, while the non-spiked samples were analysed using suspect and non-target screening. b) Distribution of the 16 laboratories participating in the study. The locations of the five organising institutes (Swedish University of Agricultural Sciences (SLU), National and Kapodistrian University of Athens (NKUA), Environmental Institute (EI), Stockholm University, Umeå University) are indicated by blue markers.

performed analyses by GC-HRMS, while three laboratories performed analyses using both methods. The participants used their own data analysis workflows for suspect and non-target screening (see Figs. S1-S23 in SD1). For LC-HRMS, ESI was the only ionisation source, while both electron ionisation (EI) and atmospheric pressure chemical ionisation (APCI) were used for GC-HRMS. Additional information on the analytical methods (manufacturer, instrumentation, column dimensions, mobile phases, injection volume, scan range and software) can be found in Tables S2-S5 in SD1.

### 3. Reference methods for sample preparation

Preparation of extracts for LC-HRMS analysis (Fig. 2a) was performed at SLU, Sweden, according to an existing protocol (Dürig et al., 2020) (for details, see SD1). Six of the participating laboratories used this reference method for their own sample preparation. The extracts for GC-HRMS analysis (Fig. 2b) were prepared at NKUA, Greece, following an existing protocol (Badry et al., 2022) with some modifications (for details, see SD1). One of the participating laboratories used the reference method for preparation of extracts for analysis. A summary of the samples analysed by the participants and the methods they used is given in Table 1.

#### 3.1. In-house methods

Twelve in-house methods, used by 10 participating laboratories, were applied in preparation of extracts for analysis by LC-HRMS, while only one in-house method was applied in preparation of extracts for GC-HRMS analysis (Table 1) (for details, see SD1).

#### 3.2. Data curation and reporting

Participants were requested to submit their results in a data collection template (DCT), a multi-tab spreadsheet commonly used by the NORMAN network in collaborative trial studies, to ensure sufficient and coherent information (for details, see SD3). The DCT included details relating to retention time index (RTI), the chromatographic and mass

spectrometric methods and reported compounds (e.g. RT,  $m/z$  intensity, MS/MS data, type of workflow, proposed compound identity, molecular formula, Chemical Abstracts Service (CAS) registration number, Simplified Molecular Input Line Entry System (SMILES) notation and identification confidence level (Schymanski et al., 2014)). For the spiked samples, suspect analysis was used to screen for the known and unknown compounds, using the participants' own suspect lists for the screening of the unknown spiked compounds (see section 3.1). Furthermore, suspect screening with the participants' own suspect lists and non-target screening were performed for non-spiked fish samples from Teltow Canal and Lake Stechlin. Requirements for non-target screening of non-spiked samples were: i) a minimum 10-fold change in contaminated samples (Teltow Canal) compared with the control sample (Lake Stechlin); ii) identified compounds should be of anthropogenic origin; and iii) identification of the 10 most intense compounds.

#### 3.3. Data analysis

For assessments of overall performance and comparability between the participants, the percentages of correctly identified known and unknown spiked compounds were compared. Specifically, the number of correctly identified compounds was compared between the three different sample preparation options, i.e. using the provided reference extract, extracting the fish sample with the reference methods or extracting the fish sample with an in-house method. These comparisons were conducted statistically through paired Wilcoxon tests, using a confidence level of 0.95. Median, mean and standard deviation for the number of correctly identified spiked compounds were also calculated. The number of reported compounds not added during spiking was additionally assessed. The data were analysed using R version 4.1.2 (R-Core-Team, 2021), with the external packages Tidyverse (Wickham et al., 2019) and rcompanion (Mangiafico, 2021).

Apart from the number of compounds detected and whether different participants identified the same compounds, the range of compounds with different physicochemical properties detectable in the fish samples was of interest. Therefore, predicted log  $K_{OW}$  and molecular mass of the identified compounds were investigated. For the spiked samples,

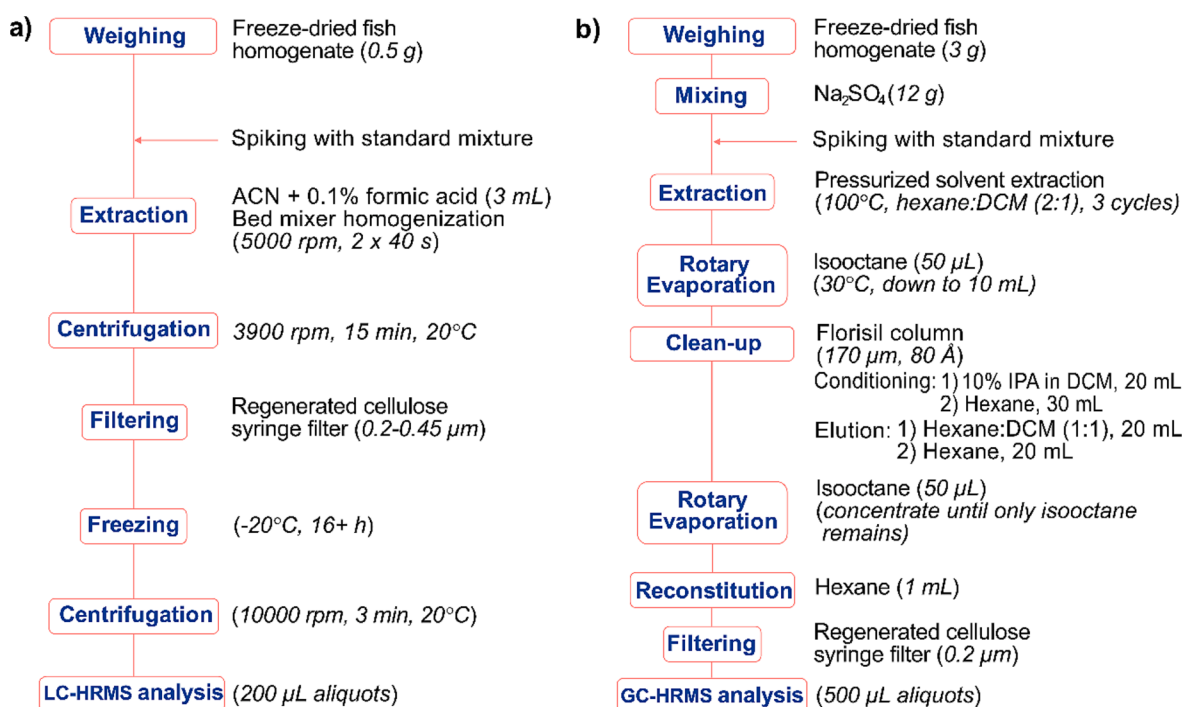


Fig. 2. Reference methods used in sample preparation for analysis by a) LC-HRMS and b) GC-HRMS. ACN: acetonitrile. DCM: dichloromethane. IPA: isopropyl alcohol.

**Table 1**

**Overview of participants ( $n = 16$ , codes A-P).** Analyses performed by the different participants ( $n = 16$ , code A-P), including types of samples (spiked samples or samples from Teltow Canal), identification method (suspect or non-target screening), instrumental analysis method (LC-HRMS or GC-HRMS) and sample preparation method (Ref (provided) = reference extract provided, Ref (pcp) = extract prepared with the reference method by the participant, in-house = extract prepared with the participant's in-house protocol). The symbol x indicates one analysis was performed, while 2x indicates that two analyses were performed in this category.

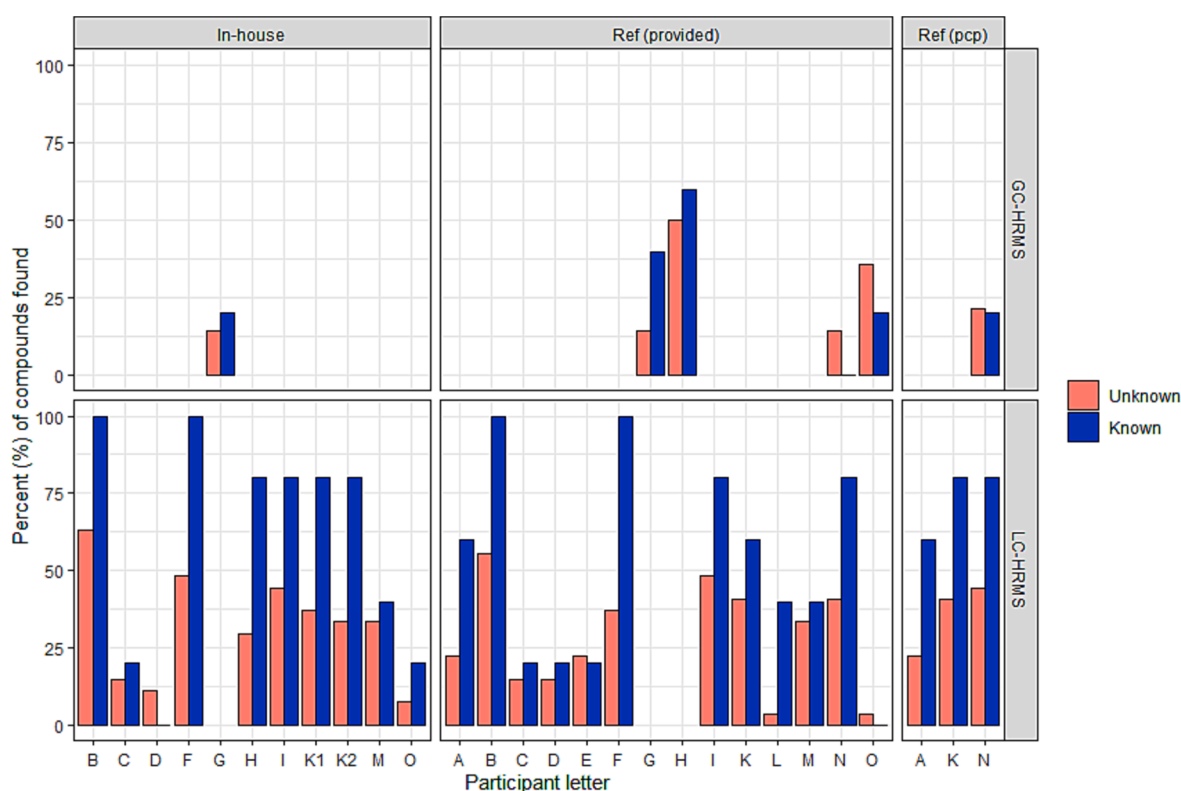
Sample	Identification method	Analysis	Sample Preparation	Participants																
				A	B	C	D	E	F	G	H	I	J	K	L	M	N	O	P	
Lake Stechlin (spiked)	Suspect screening	LC-HRMS	Ref (provided)	x	x	x	x	x	x			x	x	x	x	x	x			
			Ref (pcp)	x									x			x				
			In-house		x	x	x		x		x	x	2x		x		x			
	GC-HRMS	Ref (provided)								x	x						x	x		
		Ref (pcp)																x		
		In-house									x							x		
Teltow Canal and Lake Stechlin (non-spiked)	Suspect screening	LC-HRMS	Ref (provided)	x		x	x		x			x			x		x			
			Ref (pcp)	x	x							x		x	x		x			
			In-house		x	x	x		x		2x	x	2x							
		GC-HRMS	Ref (provided)					x			x	x							x	
			Ref (pcp)																	x
			In-house									x								x
	Non-target screening	LC-HRMS	Ref (provided)	x		x	x						x			x		x		
			Ref (pcp)	x	x									x		x		x		
			In-house		x	x	x	x				2x	x							x
		GC-HRMS	Ref (provided)									x		x					x	
			Ref (pcp)																	x
			In-house										x							x

predicted  $\log K_{OW}$  and molecular mass of the detected and undetected compounds were used to support comparisons of the methods. Predicted  $\log K_{OW}$  values were calculated from the SMILES of the compounds, using the program EPI Suite 4.1 with the individual model KOWWIN v.1.68.

## 4. Results and discussion

### 4.1. Known and unknown spiked compounds

Samples from Lake Stechlin were spiked with 32 and 19 compounds for LC- and GC-HRMS analysis, respectively, of which five compounds



**Fig. 3. Detected spiked compounds.** Percentage of spiked compounds correctly identified by the different participants ( $n = 16$ , codes A-P) for unknown spiked compounds (red bars; identity not disclosed, LC-HRMS 100 % = 27; GC-HRMS 100 % = 14) and known spiked compounds (blue bars; identity revealed to the participants, 100 % = 5 for both methods), including different methods for sample preparation (in-house = extract prepared according to the participant's in-house protocol, Ref (provided) = reference extract provided, Ref (pcp) = extract prepared by the participant using the reference method) and for analysis (LC-HRMS, GC-HRMS). If the same laboratory analysed extracts from several in-house sample preparation protocols, these were given sequential numbers following the laboratory code letter (e.g. K1, K2).

each were disclosed to the participants. This part of the study had the purpose to assess the number of correct identifications, while sample preparation and data analysis methods varied. The percentages of known (5 for LC-HRMS and GC-HRMS, respectively) and unknown (i.e. the remaining spiked compounds not disclosed to the participants) spiked compounds detected by the participating laboratories are presented in Fig. 3. For the known and unknown spiked compounds, 9–69 % (average = 41 %, median = 44 %, out of 32 compounds) were correctly identified using LC-HRMS (13 participants) and 20–60 % (average = 37 %, median = 35 %, out of 19 compounds) were correctly identified using GC-HRMS (4 participants). LC-HRMS and GC-HRMS gave similar results (mean and median) for the correctly identified compounds, but with high variation between the participating laboratories. The number of reported compounds that were not added during spiking (see Fig. S22) ranged from 0 to 185 for the LC-HRMS analyses (although  $\leq 27$  for all but one participant) and 2–34 for the GC-HRMS analyses. If these compounds were present in the fish from natural contamination prior to spiking, it should have led to replicate detections across participants. However, the findings were not reproducible and could be due to inter-laboratory variability and are likely false positives. Over-reporting in non-target screening was previously described in a collaborative blinded analysis (Ulrich et al., 2019), and the need for quality assurance/quality control (QA/QC) measures to keep the false positive rate as low as possible has been identified for future non-target screening studies (Schulze et al., 2020).

Visual inspection of the percentages of correctly identified compounds did not indicate major differences between the sample preparation methods, with the results appearing to vary more between participants than between methods (i.e. 4–56 % correctly identified unknown compounds and 0–100 % identified known compounds for the samples prepared using the LC-HRMS reference method). Means and medians of correctly identified unknown compounds were rather similar for the different sample preparation methods for LC-HRMS ( $32 \pm 17$  % for the in-house method,  $28 \pm 17$  % for provided extracts,  $36 \pm 12$  % for the reference method). A similar assessment of the GC-HRMS results was impeded by the low number of participants (14 % for the in-house method (1 participant),  $29 \pm 17$  % for provided extracts (4 participants), 21 % for the reference method (1 participant)) (Table S7 in SD1). Percentages of correctly identified spiked known compounds were below 25 % for participants G, N and O for GC-HRMS and C, D, E and O for LC-HRMS indicating that better performance and harmonisation of identification methods are needed.

Statistical comparison of the number of compounds correctly identified with LC-HRMS by the same laboratory using the in-house extract and the reference extract provided (participants B, C, D, F, I, K, M and O) revealed no significant difference ( $p > 0.05$ , paired Wilcoxon test) for either the known ( $p = 0.77$ ) or unknown compounds ( $p = 0.40$ ). Likewise, the number of compounds correctly identified by participants who used the reference method to prepare their own extract and the reference extract provided (participants A, K and N) did not show a significant difference ( $p > 0.05$ ). A paired Wilcoxon test for the known compounds resulted in  $p = 1$ , as did a similar test for the unknown compounds. This means that there was no statistical difference in the number of compounds correctly identified regardless of whether a participant analysed the provided reference extract, their own extract obtained through the reference method, or their own extract obtained through their in-house method. For the Ref (provided) and Ref (pcp) groups, finding no difference is desirable since it indicates reproducibility between laboratories using the same sample preparation method. The lack of significant difference in results using different methods indicates that the differences in the number of compounds correctly identified mainly originated from factors other than the sample preparation method. Other relevant factors include the workflow used for data analysis, such as software and library uses, criteria for acceptance and rejection etc., as well as instrument settings. However, the LC-HRMS methods used by the participants (Tables S2–S3 in SD1) were fairly

similar, so data processing seems to be the most important source of variation (Figures S1–S19 in SD1). In general, the participants followed data processing workflows as recommended in the literature (e.g. Hollender et al., 2019, Alygizakis et al., 2018, Hohrenk et al., 2020, Schulze et al., 2020), but some factors such as peak intensity, mass error, resolution are instrument specific and can explain the differences in the compounds identified by the participants. Furthermore, if the unknown spiked compounds were not included in the participants' suspect library the participant was not able to identify them. This highlights the importance of selection criteria for the suspect libraries. It should also be noted that comparisons of multiple results from the same participant might be biased since, although the results may be technically independent if based on different methods, the laboratory's data evaluation may be influenced by an interest in consistency.

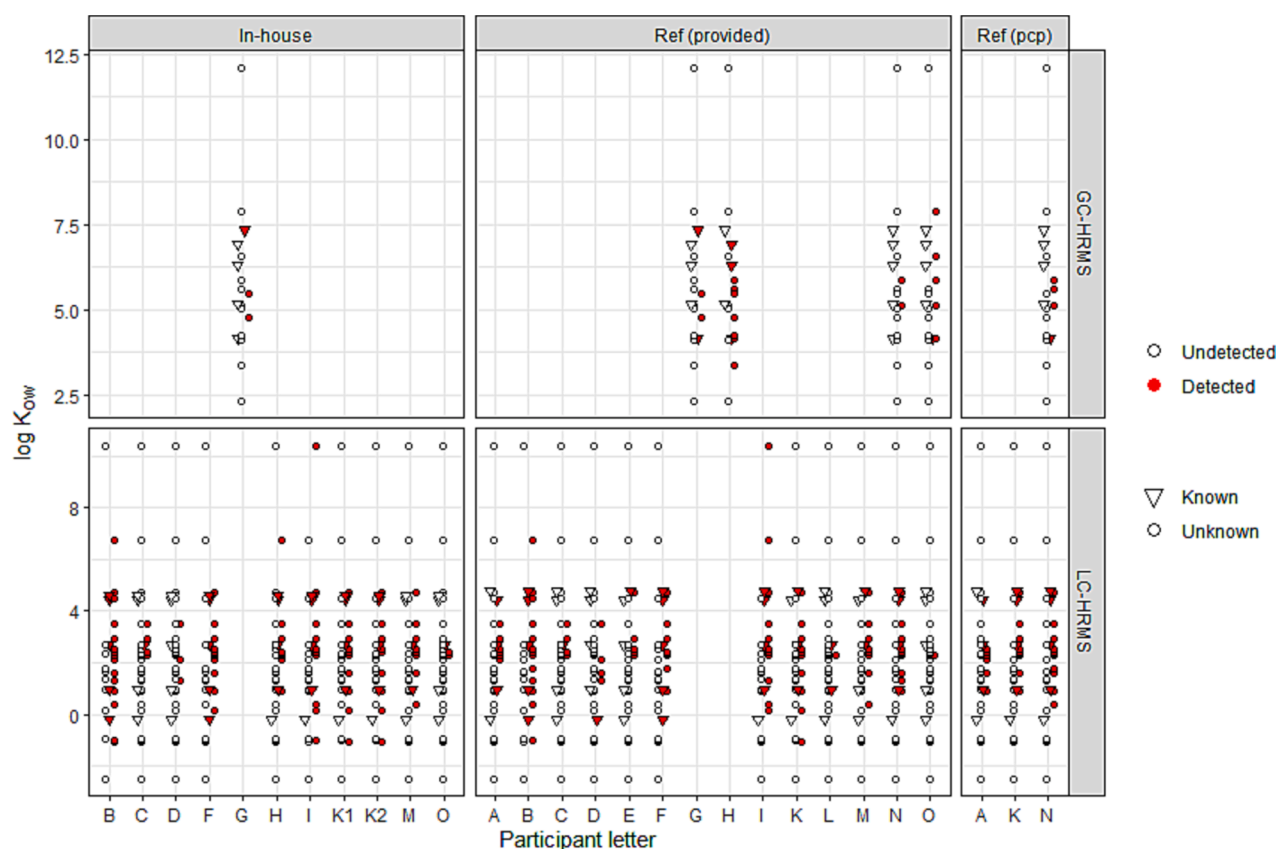
The participants who identified most spiked compounds ( $n = 32$ ) correctly by LC-HRMS analysis were participant B (22 correct compounds through the in-house protocol) and participants F and I (18 and 16 correct compounds, respectively, with their in-house method). Since these participants performed roughly equally well applying their in-house protocol as with the extract prepared by the reference protocol, different methods may serve to achieve comparable results. Upon inspection of the sample preparation protocols (for details, see SD1), the in-house protocols were relatively similar. These findings are a step forward in harmonisation of sample preparation protocols.

The percentages of participants who correctly detected specific compounds are shown in Figs. S20–S21. Natamycin, dichlofluanid, dazomet, clopyralid, amidotrizoic acid and 1,3-dichloro-5,5-dimethylhydantoin were not detected by any of the participants in their LC-HRMS analyses, which could be related to the low  $\log K_{OW}$  ( $-2.5$  to  $-2.7$ ) of these compounds making them less suitable for reverse phase LC columns, which were mainly used by the participants (Table S1 in SD1). Likewise, *n*-butylbenzenesulfonamide, musk tibeten (known), diphenyl phthalate, decabromobiphenyl and 1-chlorononane were not detected by any of the participants in their GC-HRMS analyses. These compounds have a wide range of  $\log K_{OW}$  values (2.3–12) and have previously been detected in biota (Sørensen et al., 2023). Thus, both LC-HRMS and GC-HRMS analysis show a non-negligible risk of false negatives.

Compounds detected with high frequency were triadimefon, pyrimethamine, mebendazole (known), ifosfamide (known), fenpiclonil and bicalutamide by LC-HRMS analysis, and hexachlorobenzene and chlorfenviphos (known) by GC-HRMS. These results indicate that compounds with high ( $>6$ ) or low ( $<0$ )  $\log K_{OW}$  (Fig. 4) or high  $m/z$  ( $>550$ ) value (Fig. S23 in SD1) were found less frequently. For LC-HRMS analysis, this can be partly explained by the separation methods since mainly hydrophobic  $C_{18}$ -type LC columns were used by the participants, which do not retain very polar compounds to any significant extend (Table S2 in SD1). However, this can merely be taken to indicate a trend, since the number of compounds with these characteristics was very low. Thus, more work is needed to optimise sample preparation, instrumental methods and workflow strategies for suspect and non-target screening with minimal compound discrimination.

#### 4.2. Suspect screening

LC-HRMS analysis (10 participants) led to reporting of  $\sim 1000$  unique features (on average  $\sim 145$ , median  $\sim 21$ , per participant) of fish samples from Teltow Canal (Fig. 5; Tables S9–S10 in SD1). The high average in comparison to the median can be explained by the high number of identified unique features by a few participants. The total number of features identified through GC-HRMS analysis (4 participants) was much lower (on average  $\sim 20$ , median  $\sim 21$ , per participant) of fish samples from Teltow Canal, which could be related to the low number of participants performing these analyses. Notably, the median number of features reported by LC-HRMS and GC-HRMS participants are almost the same, which suggests that most laboratories performed at a similar level. Suspect screening with LC-HRMS analysis performed on



**Fig. 4. Predicted  $\log K_{OW}$  values of spiked compounds.**  $\log K_{OW}$  values of spiked compounds predicted by participants ( $n = 16$ , code A-P) using EPI Suite 4.0, along with indication of positive (red) or negative (white) detection. Unknown compounds (spiked compounds whose identity was not disclosed) are indicated with a circle, while known compounds (spiked compounds whose identity was revealed to the participants) are marked with a triangle. The compounds are grouped according to sample preparation method (Ref (provided) = provided reference extract, Ref (pcp) = extract prepared by the participant using the reference method by the participant, in-house = extract prepared according to the participant's in-house protocol) and method of analysis (LC-HRMS, GC-HRMS). If the same laboratory analysed extracts from several in-house sample preparation protocols, these were given sequential numbers following the laboratory code letter (e.g. K1, K2).

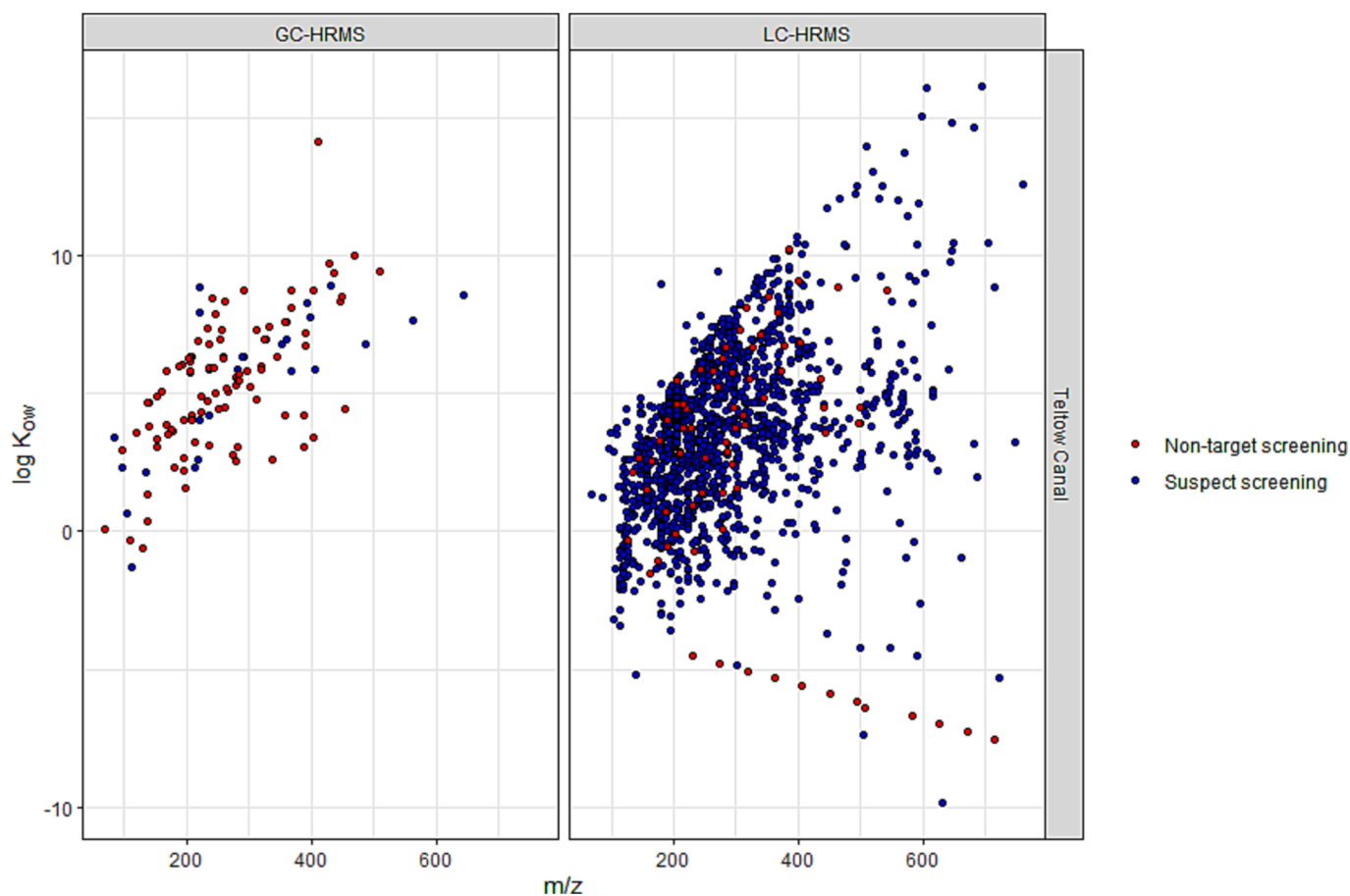
fish samples from Teltow Canal led to 16 features detected by at least two participants within the same sub-group of sample preparation method (In-house, Ref (provided), Ref (pcp)). For most of the 16 identical features, at least one of the participants identified the compound at a confidence level of 1 or 2, i.e. with a probable or confirmed structure (Schymanski et al., 2014). The 16 identified features have a wide range of predicted  $\log K_{OW}$  values ( $-0.2$  to  $7.9$ ) and masses ( $m/z$  119 to 500) (Table S8 in SD1). Including duplicates within and between sample preparation groups,  $\sim 420$  features in total were reported at a confidence level of 1 and 2 (although these are underestimates, since not all participants reported confidence levels for the identified features). Suspect screening by GC-HRMS only led to uniquely identified features ( $n = 25$ ) in contaminated samples from Teltow Canal, with no overlapping features between participants.

In suspect screening using LC-HRMS and GC-HRMS, the features detected had  $\log K_{OW}$  values in the range of  $-9.9$  to  $16$  (Fig. S24 in SD1) and an  $m/z$  range of  $68$  to  $761$  (Fig. 5, Figs. S26 and S33 in SD1). A significant linear trend was found between  $\log K_{OW}$  (Figs. S24-S25 in SD1) and  $m/z$  (Figs. S26-S27 in SD1) for the GC-HRMS results ( $p < 0.05$ ), but not for the LC-HRMS results ( $p > 0.05$ ) in suspect and non-target screening of samples from Teltow Canal (Fig. 5). Highly polar substances ( $\log K_{OW} < 0$ ) are not likely to be bioaccumulative due to their typically high water solubility (with a few exceptions such as per- and polyfluoroalkyl substances (PFAS)), and thus their tentative identification is unexpected. The detection of such compounds could either indicate false positives, or that extremely high concentrations of these compounds were present in the water. The number of features detected by the different participants using suspect screening in fish samples from

Teltow Canal showed high variations for both GC-HRMS and LC-HRMS results (Fig. 6, Figs. S28-S32, for reported confidence levels see Figs. S28-S30 and S38-S40 in SD1). The variation in suspects detected by the different participants can mainly be explained by different suspect lists and data processing steps and are less likely due to differences in sample preparation. This is consistent with previous findings showing only 10 % overlap between different processing tools applied to the same data set used for non-target screening (Hohrenk et al., 2020) indicating that the compound identification depends largely on the performance of the processing tools (e.g. resolution, QA/QC). However, harmonized data processing can be challenging because often, vendor software is used and these programs are largely “black boxes”.

#### 4.3. Non-target screening

Non-target screening was different from the suspect screening approaches by introducing a set of criteria that had to be met: i) a minimum 10-fold change in contaminated samples (Teltow Canal) compared with the control sample (Lake Stechlin); ii) identified compounds should be of anthropogenic origin; and iii) identification of the 10 most intense compounds. The participants were asked to highlight the ten compounds with the highest intensity in the samples from Teltow Canal. However, some participants identified  $> 10$  compounds and thus all compounds identified are reported here. The number of compounds detected by the different participants using non-target screening is shown in Fig. 7 (for details see Figs. S27, S29, S30, S32, S39 and S40 in SD1). Non-target screening using LC-HRMS (10 participants) led to the detection of, on average, 42 features (median 14) per participant, with a maximum



**Fig. 5. Range of detected features.**  $m/z$  values versus  $\log K_{OW}$  values for the features found by all participants using suspect screening (blue) or non-target screening (red) in fish samples from Teltow Canal with (left) GC-HRMS analysis and (right) LC-HRMS analysis and all three sample preparation methods (reference extract provided, extract prepared according to the reference protocol, or extract prepared according to the participant's in-house protocol). Reported features that were ambiguously identified (not containing a name/SMILES/other identifier, or containing several ones for the same  $m/z$ ) are excluded from the diagram since no single  $\log K_{OW}$  value could be calculated.

number of 178 features (Table S9 in SD1). The number of features identified through GC-HRMS ( $n = 3$ ) was, on average, 56 (median 45) per participant, with a maximum number of 60 features. Non-target screening by LC-HRMS only generated unique identified features, which is in line with findings in a previous study comparing data process software (Hohrenk et al., 2020). In GC-HRMS analysis of the samples, two out of three participants identified  $pp'$ -DDMU, a metabolite of the organochlorine pesticide  $pp'$ -DDT, from the reference extract provided.

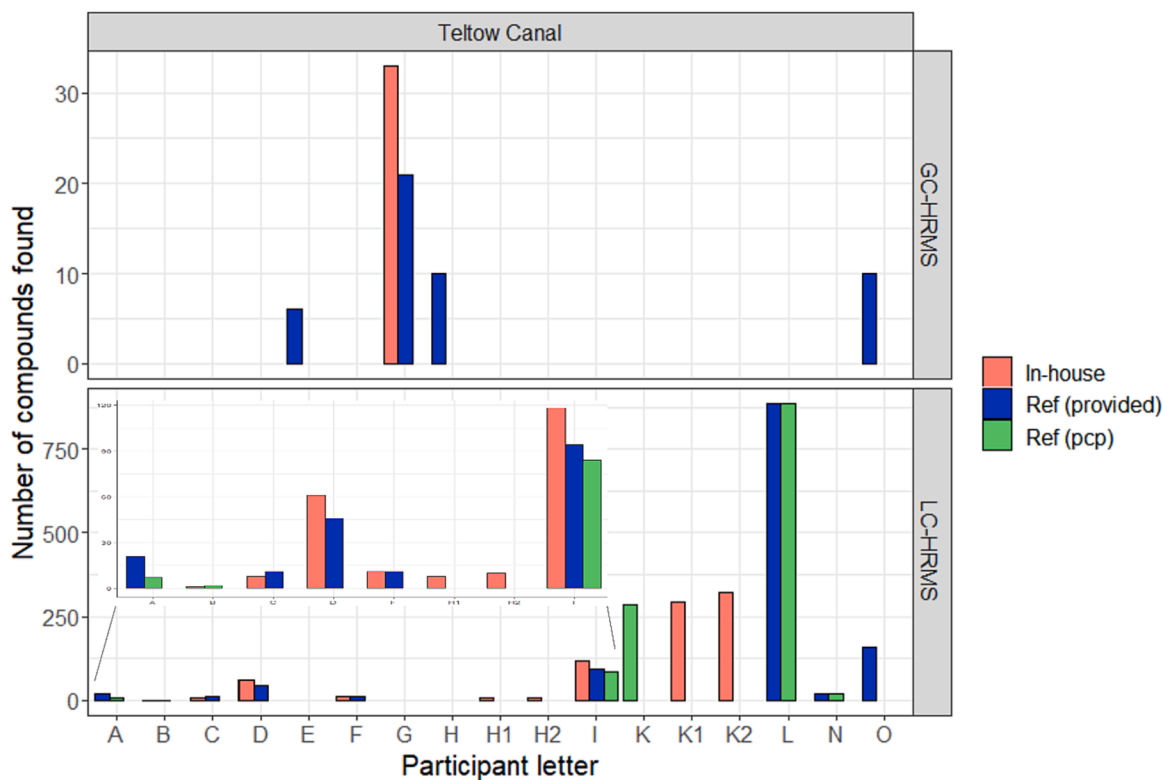
In non-target screening using LC-HRMS and GC-HRMS, the features detected had a range of  $\log K_{OW}$  values of  $-7.5$  to  $14$  (Fig. S25 in SD1) and  $m/z$  of  $68$  to  $714$  (Fig. 5, Figs. S27 and S33 in SD1). A full list of the features detected and identified by suspect and non-target screening can be found in Table S11 in SD2, where detected  $m/z$  values reported with molecular formula as the sole identifier ( $\geq$  level 4 without tentative name or structure) have been removed for clarity. Some participants reported naturally occurring features, despite a request that only anthropogenic compounds should be reported. In cases where such features were reported they were included, since it is challenging to discriminate between anthropogenic and natural compounds (Singh et al., 2023) and revising all reported features and removing them would have been too labour-intensive. RTI was used by 64 % and 33 % of the participants applying LC-HRMS and GC-HRMS, respectively (one participant used Kovats index instead of RTI in GC-HRMS). A previous study has shown that RTI increases the reliability of the identification (Aalizadeh et al., 2021).

## 5. Conclusions and recommendations

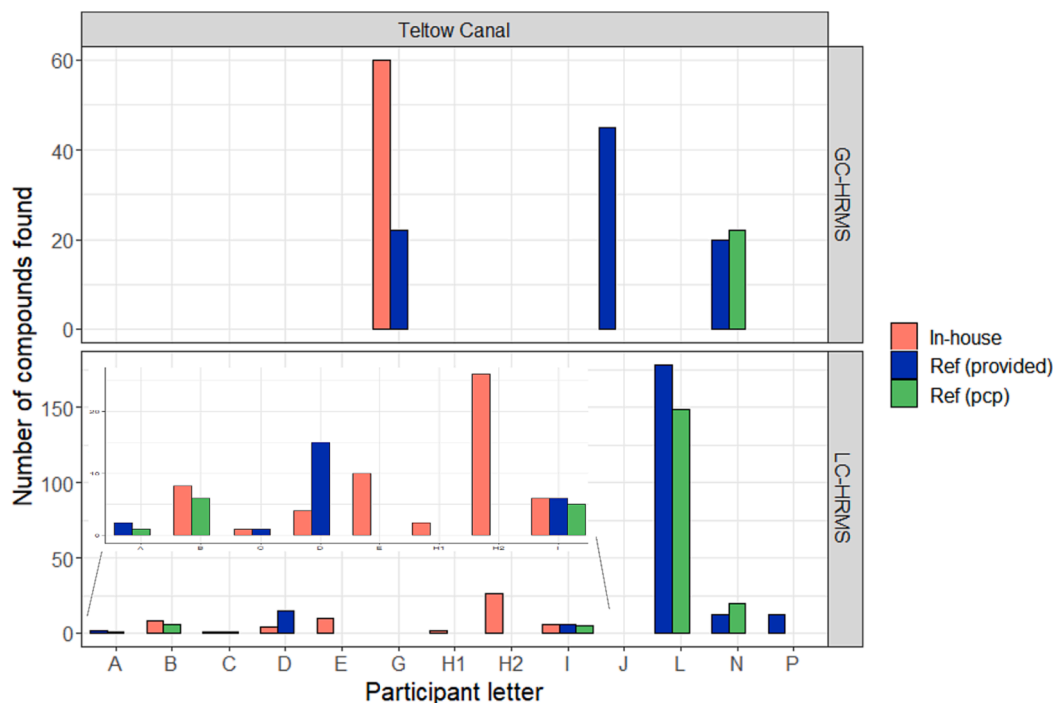
The percentage of correctly identified known and unknown spiked compounds showed high variation between the participating laboratories with, on average, 41 % (maximum 69 %) correctly identified using LC-HRMS and 37 % (maximum 60 %) correctly identified using GC-HRMS. Means and medians of correctly identified unknown compounds in LC-HRMS analysis were rather similar for the different sample preparation methods (i.e. in-house method, extracts provided, reference method) (with fewer participants, interpretation of the results obtained by GC-HRMS was limited). Thus factors such as the data analysis seemed to be a more important source of variation. False positives were also reported by all participants, indicating the need for better QA/QC steps in data curation. Suspect screening resulted in a large number of features identified in samples from the contaminated Teltow Canal (on average  $\sim 145$  and  $\sim 20$  unique features per participant using LC-HRMS and GC-HRMS, respectively), as did non-target screening with predefined reporting criteria (on average 42 and 56 unique features per participant using LC-HRMS and GC-HRMS, respectively). The compounds detected had  $\log K_{OW}$  values ranging from  $-9.9$  to  $16$  and  $m/z$  values from  $68$  to  $761$ , with a significant linear trend between  $\log K_{OW}$  and  $m/z$  for the GC-HRMS data. Within the same sub-group of sample preparation method, only a few features were identified by at least two participants in suspect screening.

Overall, the field of suspect and non-target screening in biota is still under development and results in different studies performed on biota are currently not fully comparable, with a high inter-laboratory





**Fig. 6. Compounds detected by suspect screening.** Number of compounds (at all confidence levels) in fish samples from Teltow Canal reported by the participants ( $n = 16$ , code A-P) using a suspect screening approach, for different sample preparation methods (reference extract provided = blue, extract prepared by the participant using the reference method = green, extract prepared according to the participant’s in-house protocol = red), and instrumental analysis methods (LC-HRMS, GC-HRMS). If the same laboratory analysed extracts from several in-house sample preparation protocols, these were given sequential numbers following the laboratory code letter (e.g. K1, K2).



**Fig. 7. Compounds detected by non-target screening.** Number of compounds reported by the participants (at all confidence levels) in fish samples from Teltow Canal ( $n = 16$ , code A-P) using the non-target screening approach, for different sample preparation methods (reference extract provided = blue, extract prepared by the participant using the reference method = green, extract prepared according to the participant’s in-house protocol = red), and instrumental analysis methods (LC-HRMS, GC-HRMS). If the same laboratory analysed extracts from several in-house sample preparation protocols, these were given sequential numbers following the laboratory code letter (e.g. H1, H2).

variability. Different methods were applied for sample preparation, but above all data processing contributed substantially to the overall variation observed in the present trial. Some recommendations on suitable data processing can be found in the recently published NORMAN guidance on suspect and non-target screening in environmental monitoring (Hollender et al., 2023). In addition, it is recommended to implement routine QA/QC measures for suspect and non-target screening such as blanks, internal standards, repetitions, randomization, calibration, tuning, data independent acquisition, use of multiple databases, and use of confidence levels (Schulze et al., 2020). However, the complex biota matrix also demands further work to establish sample preparation methods that provide an acceptable level of selectivity to minimise matrix effects and reduce the rate of false positive results. On the instrument side, alternative soft ionisation techniques can provide molecular ions for a wider range of GC amenable compounds, which could be useful in suspect screening workflows. Use of different sample preparation protocols and instruments is probably advantageous, as they are often complementary and therefore broaden the visible chemical space. However, there is a high risk of false positives and false negatives in suspect and non-target screening, and more standardised approaches in QA/QC are needed to manage and reduce these risks.

### CRediT authorship contribution statement

**Wiebke Dürig:** Conceptualization, Data curation, Formal analysis, Investigation, Methodology, Visualization, Writing – original draft, Writing – review & editing. **Sofia Lindblad:** Conceptualization, Data curation, Formal analysis, Investigation, Methodology, Visualization, Writing – original draft, Writing – review & editing. **Oksana Golovko:** Conceptualization, Investigation, Methodology, Writing – review & editing. **Georgios Gkotsis:** Conceptualization, Investigation, Methodology, Writing – review & editing. **Reza Aalizadeh:** Conceptualization, Investigation, Methodology, Writing – review & editing. **Maria-Christina Nika:** Conceptualization, Investigation, Methodology, Writing – review & editing. **Nikolaos Thomaidis:** Conceptualization, Investigation, Methodology, Writing – review & editing. **Nikiforos A. Alygizakis:** Conceptualization, Investigation, Methodology, Writing – review & editing. **Merle Plassmann:** Conceptualization, Investigation, Methodology, Writing – review & editing. **Peter Haglund:** Conceptualization, Investigation, Methodology, Writing – review & editing. **Qiuguo Fu:** Investigation, Methodology, Writing – review & editing. **Juliane Hollender:** Investigation, Methodology, Writing – review & editing. **Jade Chaker:** Investigation, Methodology, Writing – review & editing. **Arthur David:** Investigation, Methodology, Writing – review & editing. **Uwe Kunkel:** Investigation, Methodology, Writing – review & editing. **André Macherius:** Investigation, Methodology, Writing – review & editing. **Lidia Belova:** Investigation, Methodology, Writing – review & editing. **Giulia Poma:** Investigation, Methodology, Writing – review & editing. **Hugues Preud'Homme:** Investigation, Methodology, Writing – review & editing. **Catherine Munsch:** Investigation, Methodology, Writing – review & editing. **Yann Aminot:** Investigation, Methodology, Writing – review & editing. **Carsten Jaeger:** Investigation, Methodology, Writing – review & editing. **Jan Lisec:** Investigation, Methodology, Writing – review & editing. **Martin Hansen:** Investigation, Methodology, Writing – review & editing. **Katrin Vorkamp:** Investigation, Methodology, Writing – review & editing. **Linyan Zhu:** Investigation, Methodology, Writing – review & editing. **Francesca Cappelli:** Investigation, Methodology, Writing – review & editing. **Claudio Roscioli:** Investigation, Methodology, Writing – review & editing. **Sara Valsecchi:** Investigation, Methodology, Writing – review & editing. **Renzo Bagnati:** Investigation, Methodology, Writing – review & editing. **Belén González:** Investigation, Methodology, Writing – review & editing. **Ailette Prieto:** Investigation, Methodology, Writing – review & editing. **Olatz Zuloaga:** Investigation, Methodology, Writing – review & editing. **Ruben Gil-Solsona:** Investigation, Methodology, Writing – review & editing. **Pablo Gago-Ferrero:** Investigation, Methodology, Writing –

review & editing. **Sara Rodriguez-Mozaz:** Investigation, Methodology, Writing – review & editing. **Hélène Budzinski:** Investigation, Methodology, Writing – review & editing. **Marie-Helene Devier:** Investigation, Methodology, Writing – review & editing. **Georg Dierkes:** Investigation, Methodology, Writing – review & editing. **Lise Boulard:** Investigation, Methodology, Writing – review & editing. **Griet Jacobs:** Investigation, Methodology, Writing – review & editing. **Stefan Voorspoels:** Investigation, Methodology, Writing – review & editing. **Heinz Rüdell:** Investigation, Methodology, Writing – review & editing. **Lutz Ahrens:** Project administration, Conceptualization, Visualization, Writing – original draft, Writing – review & editing.

### Declaration of Competing Interest

The authors declare that they have no known competing financial interests or personal relationships that could have appeared to influence the work reported in this paper.

### Data availability

Data will be made available on request.

### Acknowledgements

This work was supported by the NORMAN network.

### Appendix A. Supplementary materials

Supplementary data to this article can be found online at <https://doi.org/10.1016/j.envint.2023.108288>.

### References

- Aalizadeh, R., Alygizakis, N.A., Schymanski, E.L., Krauss, M., Schulze, T., Ibáñez, M., McEachran, A.D., Chao, A., Williams, A.J., Gago-Ferrero, P., Covaci, A., Moschet, C., Young, T.M., Hollender, J., Slobodnik, J., Thomaidis, N.S., 2021. Development and application of liquid chromatographic retention time indices in HRMS-based suspect and nontarget screening. *Anal. Chem.* 93, 11601–11611.
- Álvarez-Ruiz, R., Picó, Y., 2020. Analysis of emerging and related pollutants in aquatic biota. *Trends Environ. Anal. Chem.* 25, e00082.
- Alygizakis, N.A., Samanipour, S., Hollender, J., Ibáñez, M., Kaserzon, S., Kokkali, V., van Leerdam, J.A., Mueller, J.F., Pijnappels, M., Reid, M.J., 2018. Exploring the potential of a global emerging contaminant early warning network through the use of retrospective suspect screening with high-resolution mass spectrometry. *Environ. Sci. Technol.* 52, 5135–5144.
- Badea, S.-L., Geana, E.-I., Niculescu, V.-C., Ionete, R.-E., 2020. Recent progresses in analytical GC and LC mass spectrometric based-methods for the detection of emerging chlorinated and brominated contaminants and their transformation products in aquatic environment. *Sci. Total Environ.* 722, 137914.
- Bader, T., Schulz, W., Kümmerer, K., Winzenbacher, R., 2016. General strategies to increase the repeatability in non-target screening by liquid chromatography-high resolution mass spectrometry. *Anal. Chim. Acta* 935, 173–186.
- Badry, A., Krone, O., Jaspers, V.L., Mateo, R., García-Fernández, A., Leivits, M., Shore, R. F., 2020. Towards harmonisation of chemical monitoring using avian apex predators: Identification of key species for pan-European biomonitoring. *Sci. Total Environ.* 731, 139198.
- Badry, A., Treu, G., Gkotsis, G., Nika, M.-C., Alygizakis, N., Thomaidis, N.S., Voigt, C.C., Krone, O., 2022. Ecological and spatial variations of legacy and emerging contaminants in white-tailed sea eagles from Germany: Implications for prioritisation and future risk management. *Environ. Int.* 158, 106934.
- Baduel, C., Mueller, J.F., Tsai, H., Ramos, M.J.G., 2015. Development of sample extraction and clean-up strategies for target and non-target analysis of environmental contaminants in biological matrices. *J. Chromatogr. A* 1426, 33–47.
- Bastian, S., Youngjoon, J., Sarit, K., Amy, H.L., Pradeep, D., Jose, G.R.M., Sara, G.G., Jochen, M.F., Kevin, T.V., Saer, S., 2020. An assessment of quality assurance/quality control efforts in high resolution mass spectrometry non-target workflows for analysis of environmental samples. *TrAC Trends Anal. Chem.* 116063.
- Caballero-Casero, N., Belova, L., Vervliet, P., Antignac, J.-P., Castano, A., Debrauer, L., Lopez, M.E., Huber, C., Klanova, J., Krauss, M., 2021. Towards harmonized criteria in Quality Assurance and Quality Control of suspect and non-target LC-HRMS analytical workflows for screening of emerging contaminants in human biomonitoring. *TrAC Trends Anal. Chem.* 116201.
- Chaker, J., Kristensen, D.M., Halldorsson, T.I., Olsen, S.F., Monfort, C., Chevrier, C., Jégou, B., David, A., 2022. Comprehensive Evaluation of Blood Plasma and Serum Sample Preparations for HRMS-Based Chemical Exposomics: Overlaps and Specificities. *Anal. Chem.* 94 (2), 866–874.

- Chen, Y.C., Hsu, J.F., Chang, C.W., Li, S.W., Yang, Y.C., Chao, M.R., Chen, H.J.C., Liao, P. C., 2022. Connecting chemical exposome to human health using high-resolution mass spectrometry-based biomonitoring: Recent advances and future perspectives. *Mass Spectrom. Rev.* e21805.
- Crimmins, B.S., McCarty, H.B., Fernando, S., Milligan, M.S., Pagano, J.J., Holsen, T.M., Hopke, P.K., 2018. Commentary: Integrating non-targeted and targeted chemical screening in Great Lakes fish monitoring programs. *J. Great Lakes Res.* 44, 1127–1135.
- David, A., Abdul-Sada, A., Lange, A., Tyler, C.R., Hill, E.M., 2014. A new approach for plasma (xeno) metabolomics based on solid-phase extraction and nanoflow liquid chromatography-nanoelectrospray ionisation mass spectrometry. *J. Chromatogr. A* 1365, 72–85.
- Diamanti, K.S., Alygizakis, N.A., Nika, M.-C., Oswaldova, M., Oswald, P., Thomaidis, N. S., Slobodnik, J., 2020. Assessment of the chemical pollution status of the Dniester River Basin by wide-scope target and suspect screening using mass spectrometric techniques. *Anal. Bioanal. Chem.* 412, 4893–4907.
- Dirtu, A.C., van den Eede, N., Malarvannan, G., Ionas, A.C., Covaci, A., 2012. Analytical methods for selected emerging contaminants in human matrices—a review. *Anal. Bioanal. Chem.* 404, 2555–2581.
- Dulio, V., van Bavel, B., Brorström-Lundén, E., Harmsen, J., Hollender, J., Schlabach, M., Slobodnik, J., Thomas, K., Koschorreck, J., 2018. Emerging pollutants in the EU: 10 years of NORMAN in support of environmental policies and regulations. *Environ. Sci. Eur.* 30, 5.
- Dürig, W., Kintzi, A., Golovko, O., Wiberg, K., Ahrens, L., 2020. New extraction method prior to screening of organic micropollutants in various biota matrices using liquid chromatography coupled to high-resolution time-of-flight mass spectrometry. *Talanta* 219, 121294.
- Fakouri Baygi, S., Fernando, S., Hopke, P.K., Holsen, T.M., Crimmins, B.S., 2020. Decadal differences in emerging halogenated contaminant profiles in great lakes top predator fish. *Environ. Sci. Technol.* 54, 14352–14360.
- Fidalgo-Used, N., Blanco-González, E., Sanz-Medel, A., 2007. Sample handling strategies for the determination of persistent trace organic contaminants from biota samples. *Anal. Chim. Acta* 590, 1–16.
- González-Gaya, B., Lopez-Herguedas, N., Bilbao, D., Mijangos, L., Iker, A., Etxebarria, N., Irazola, M., Prieto, A., Olivares, M., Zuloaga, O., 2021. Suspect and non-target screening: the last frontier in environmental analysis. *Anal. Methods* 13, 1876–1904.
- Hajeb, P., Zhu, L., Bossi, R., Vorkamp, K., 2022. Sample preparation techniques for suspect and non-target screening of emerging contaminants. *Chemosphere* 287, 132306.
- Hogenboom, A., van Leerdam, J., de Voogt, P., 2009. Accurate mass screening and identification of emerging contaminants in environmental samples by liquid chromatography–hybrid linear ion trap Orbitrap mass spectrometry. *J. Chromatogr. A* 1216, 510–519.
- Hohrenk, L.L., Itzel, F., Baetz, N., Tuerk, J., Vosough, M., Schmidt, T.C., 2020. Comparison of software tools for liquid chromatography–high-resolution mass spectrometry data processing in nontarget screening of environmental samples. *Anal. Chem.* 92, 1898–1907.
- Hollender, J., Schymanski, E.L., Ahrens, L., Alygizakis, N., Béen, F., Bijlsma, L., Brunner, A.M., Celma, A., Fildier, A., Fu, Q., Gago-Ferrero, P., Gil-Solsona, R., Haglund, P., Hansen, M., Kaserzon, S., Krueve, A., Lamoree, M., Margoum, C., Meijer, J., Merel, S., Rauer, C., Rostkowski, P., Samanipour, S., Schulze, B., Schulze, T., Singh, R.R., Slobodnik, J., Steininger-Mairinger, T., Thomaidis, N.S., Togola, A., Vorkamp, K., Vulliet, E., Zhu, L., Krauss, M., 2023. NORMAN guidance on suspect and non-target screening in environmental monitoring. *Env. Sci. Eur.* 35, 75.
- Hollender, J., Schymanski, E.L., Singer, H.P., Ferguson, P.L., 2017. Nontarget screening with high resolution mass spectrometry in the environment: ready to go? *Environ. Sci. Technol.* 51 (20), 11505–11512.
- Hollender, J., van Bavel, B., Dulio, V., Farmen, E., Furtmann, K., Koschorreck, J., Kunkel, U., Krauss, M., Munthe, J., Schlabach, M., 2019. High resolution mass spectrometry-based non-target screening can support regulatory environmental monitoring and chemicals management. *Environ. Sci. Eur.* 31, 1–11.
- Knoll, S., Rösch, T., Huhn, C., 2020. Trends in sample preparation and separation methods for the analysis of very polar and ionic compounds in environmental water and biota samples. *Anal. Bioanal. Chem.* 1–17.
- Mangiafico, S. 2021. rcompanion: Functions to support extension education program evaluation. *R package version 2.4.6*. <https://CRAN.R-project.org/package=rcompanion>.
- Menger, F., Gago-Ferrero, P., Wiberg, K., Ahrens, L., 2020. Wide-scope screening of polar contaminants of concern in water: a critical review of liquid chromatography-high resolution mass spectrometry-based strategies. *Trends Environ. Anal. Chem.* e00102.
- Pourchet, M., Debrauwer, L., Klanova, J., Price, E.J., Covaci, A., Caballero-Casero, N., Oberacher, H., Lamoree, M., Damont, A., Fenaille, F., Vlaanderen, J., Meijer, J., Krauss, M., Sarigiannis, D., Barouki, R., Le Bizec, B., Antignac, J.-P., 2020. Suspect and non-targeted screening of chemicals of emerging concern for human biomonitoring, environmental health studies and support to risk assessment: From promises to challenges and harmonisation issues. *Environ. Int.* 139, 105545.
- R-CORE-TEAM 2021. R: A language and environment for statistical computing. *R Foundation for Statistical Computing*, Vienna, Austria. URL <https://www.R-project.org/>.
- Rebryk, A., Haglund, P., 2021. Non-targeted screening workflows for gas chromatography–high-resolution mass spectrometry analysis and identification of biomagnifying contaminants in biota samples. *Anal. Bioanal. Chem.* 413, 479–501.
- Rebryk, A., Haglund, P., 2022. Comprehensive non-target screening of biomagnifying organic contaminants in the Baltic Sea food web. *Sci. Total Environ.* 851.
- Rostkowski, P., Haglund, P., Aalizadeh, R., Alygizakis, N., Thomaidis, N., Arandes, J.B., Nizzetto, P.B., Booi, P., Budzinski, H., Brunswick, P., 2019. The strength in numbers: comprehensive characterization of house dust using complementary mass spectrometric techniques. *Anal. Bioanal. Chem.* 411, 1957–1977.
- Rüdel, H., Uhlig, S., Weingärtner, M., 2008. Pulverisation and Homogenisation of Environmental Samples by Cryomilling. Guidelines for Sampling and Sample Processing. Fraunhofer IME, Schmallenberg, Germany and German Environment Agency, Dessau-Rosslau, Germany. December 2008, Version 2.0.0. [https://www.umweltprobenbank.de/upb\\_static/fck/download/IME\\_SOP\\_preparation\\_Dez2008\\_V200.pdf](https://www.umweltprobenbank.de/upb_static/fck/download/IME_SOP_preparation_Dez2008_V200.pdf).
- Schulze, B., Jeon, Y., Kaserzon, S., Heffernan, A.L., Dewapriya, P., O'Brien, J., GomezRamos, M.J., GhorbaniGorji, S., Mueller, J.F., Thomas, K.V., Samanipour, S., 2020. An assessment of quality assurance/quality control efforts in high resolution mass spectrometry non-target workflows for analysis of environmental samples. *TrAC Trends Anal. Chem.* 133.
- Schulze, B., van Herwerden, D., Allan, I., Bijlsma, L., Etxebarria, N., Hansen, M., Merel, S., Vrana, B., Aalizadeh, R., Bajema, B., 2021. Inter-laboratory mass spectrometry dataset based on passive sampling of drinking water for non-target analysis. *Sci. Data* 8, 1–10.
- Schymanski, E.L., Jeon, J., Gulde, R., Fenner, K., Ruff, M., Singer, H.P., Hollender, J., 2014. Identifying small molecules via high resolution mass spectrometry: Communicating confidence. *Environ. Sci. Technol.* 48, 2097–2098.
- Schymanski, E.L., Singer, H.P., Slobodnik, J., Ipolyi, I.M., Oswald, P., Krauss, M., Schulze, T., Haglund, P., Letzel, T., Grosse, S., 2015. Non-target screening with high-resolution mass spectrometry: critical review using a collaborative trial on water analysis. *Anal. Bioanal. Chem.* 407, 6237–6255.
- Singh, R.R., Aminot, Y., Héas-Moisan, K., Preud'homme, H., Munsch, C., 2023. Cracked and shucked: GC-APCI-IMS-HRMS facilitates identification of unknown halogenated organic chemicals in French marine bivalves. *Environ. Int.* 178, 108094.
- Sobek, A., Bejgarn, S., Rudén, C., Breitholtz, M., 2016. The dilemma in prioritizing chemicals for environmental analysis: known versus unknown hazards. *Environ. Sci. Processes Impacts* 18, 1042–1049.
- Sørensen, L., Schaufelberger, S., Igartua, A., Størseth, T.R., Øverjordet, I.B., 2023. Non-target and suspect screening reveal complex pattern of contamination in Arctic marine zooplankton. *Sci. Total Environ.* 864, 161056.
- Ulrich, E.M., Sobus, J.R., Grulke, C.M., Richard, A.M., Newton, S.R., Strynar, M.J., Mansouri, K., Williams, A.J., 2019. EPA's non-targeted analysis collaborative trial (ENTACT): genesis, design, and initial findings. *Anal. Bioanal. Chem.* 411, 853–866.
- Vandermeersch, G., Lourenço, H.M., Alvarez-Muñoz, D., Cunha, S., Diogène, J., Cano-Sancho, G., Sloth, J.J., Kwadijk, C., Barcelo, D., Allegaert, W., Bekaert, K., Fernandes, J.O., Marques, A., Robbens, J., 2015. Environmental contaminants of emerging concern in seafood – European database on contaminant levels. *Environ. Res.* 143, 29–45.
- Vitale, C.M., Price, E.J., Miller, G.W., David, A., Antignac, J.-P., Barouki, R., Klánová, J., 2021. Analytical strategies for chemical exposomics: exploring limits and feasibility. *Exposome* 1, osab003.
- Wang, Z., Walker, G.W., Muir, D.C., Nagatani-Yoshida, K., 2020. Toward a global understanding of chemical pollution: a first comprehensive analysis of national and regional chemical inventories. *Environ. Sci. Tech.* 54, 2575–2584.
- Wickham, H., Averick, M., Bryan, J., Chang, W., McGowan, L.D.A., François, R., Grolemund, G., Hayes, A., Henry, L., Hester, J., 2019. Welcome to the Tidyverse. *J. Open Source Soft* 4, 1686.
- Wode, F., van Baar, P., Dünnbier, U., Hecht, F., Taute, T., Jekel, M., Reemtsma, T., 2015. Search for over 2000 current and legacy micropollutants on a wastewater infiltration site with a UPLC-high resolution MS target screening method. *Water Res.* 69, 274–283.
- Xia, L., Yang, J., Su, R., Zhou, W., Zhang, Y., Zhong, Y., Huang, S., Chen, Y., Li, G., 2019. Recent progress in fast sample preparation techniques. *Anal. Chem.* 92, 34–48.